

SCHEDA - CARD	PRODOTTO - PRODUCT	SCHEMA - SCHEMA	VUR
<b>G10/C</b>			<b>VALVOLA DI RITEGNO IN LINEA CON OTTURATORE</b> <b>CHECK VALVE - POPPET SERIES</b>

**APPLICAZIONE**

Sono utilizzate per consentire il passaggio del flusso in un senso ed impedirlo nella direzione opposta.

**MONTAGGIO**

Collegare la bocca B all'alimentazione e la bocca A all'attuatore.

**FUNZIONAMENTO**

Il fluido passa libero da B verso A ed è completamente bloccato da A verso B. Possono essere utilizzati come regolatori di flusso unidirezionali a taratura fissa richiedendo foro calibrato.

**A RICHIESTA**

Zincatura nera - Molle speciali - Foro calibrato - Marcatura personalizzabile.

**NOTE COSTRUTTIVE**

Corpo in acciaio zincato - Componenti in acciaio trattati termicamente - Non ammette trafilementi.

**APPLICATION**

Flow is free in one direction and is blocked in the opposite direction.

**INSTALLATION**

Connect actuator to port A and pressure flow to port B.

**OPERATION**

These valves allow flow from port B to port A and block the flow in the opposite direction. They may as well be used as unidirectional flow regulators with fixed setting, by requesting a calibrated hole.

**OPTIONAL**

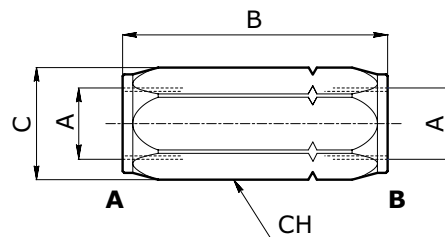
Black zinc plated - Special springs - Calibrated hole - Custom marking.

**FEATURES**

Zinc plated steel body - Hardened internal components made of steel - No leakage

**CARATTERISTICHE - HYDRAULIC FEATURES**

Dimensione <i>Dimension</i>	005	01	015	02	03	04	05	06	07
Portata max cono <i>Max Flow Poppet (l/min)</i>	15	30	30	50	90	130	180	250	380
Pressione max <i>Max pressure (bar)</i>	400	400	400	400	350	300	270	250	200



**OPZIONALE - OPTIONAL**

Descrizione <i>Description</i>	Foro calibrato <i>Calibrated hole</i>
Schema <i>Schema</i>	

**DIMENSIONI E PESI - EXTERNAL DIMENSIONS AND WEIGHTS**

Dimensione - <i>Dimension</i>	A gas	A npt	A sae	B gas	B npt	B sae	C	Ch	Peso - <i>Weight (kg)</i>
<b>005</b>	-	-	7/16-20	-	-	60	21	19	-
<b>01</b>	1/4	1/4	-	58	60	-	21	19	0.10
<b>015</b>	-	-	9/16-18	-	-	60	21	19	0.10
<b>02</b>	3/8	3/8	3/4-16	62	69	69	27	24	0.18
<b>03</b>	1/2	1/2	7/8-14	71	79	79	33	30	0.31
<b>04</b>	3/4	3/4	1 1/16-12	83	94	94	40	36	0.56
<b>05</b>	1	1	1 5/16-12	106	106	106	59	45	0.91
<b>06</b>	1 1/4	1 1/4	1 5/8-12	127	127	127	63	55	1.48
<b>07</b>	1 1/2	1 1/2	1 7/8-12	138	138	138	74	65	2.37

**CODICE ORDINAZIONE - ORDERING CODE**

<b>VUR</b>																																																																										
<table border="1" style="font-size: 8px;"> <thead> <tr> <th colspan="4">Dimensione - <i>Dimension</i></th> </tr> <tr> <th>Tipo-Type</th> <th>GAS</th> <th>NPT</th> <th>SAE</th> </tr> </thead> <tbody> <tr><td>005</td><td>-</td><td>-</td><td>7/16-20</td></tr> <tr><td>01</td><td>1/4</td><td>1/4</td><td>-</td></tr> <tr><td>015</td><td>-</td><td>-</td><td>9/16-18</td></tr> <tr><td>02</td><td>3/8</td><td>3/8</td><td>3/4-16</td></tr> <tr><td>03</td><td>1/2</td><td>1/2</td><td>7/8-14</td></tr> <tr><td>04</td><td>3/4</td><td>3/4</td><td>1 1/16-12</td></tr> <tr><td>05</td><td>1</td><td>1</td><td>1 5/16-12</td></tr> <tr><td>06</td><td>1 1/4</td><td>1 1/4</td><td>1 5/8-12</td></tr> <tr><td>07</td><td>1 1/2</td><td>1 1/2</td><td>1 7/8-12</td></tr> </tbody> </table>	Dimensione - <i>Dimension</i>				Tipo-Type	GAS	NPT	SAE	005	-	-	7/16-20	01	1/4	1/4	-	015	-	-	9/16-18	02	3/8	3/8	3/4-16	03	1/2	1/2	7/8-14	04	3/4	3/4	1 1/16-12	05	1	1	1 5/16-12	06	1 1/4	1 1/4	1 5/8-12	07	1 1/2	1 1/2	1 7/8-12	<table border="1" style="font-size: 8px;"> <thead> <tr> <th colspan="2">Tenuta <i>Type</i></th> </tr> </thead> <tbody> <tr> <td style="text-align: center;">C</td> <td>Cono <i>Poppet type</i></td> </tr> </tbody> </table>	Tenuta <i>Type</i>		C	Cono <i>Poppet type</i>	<table border="1" style="font-size: 8px;"> <thead> <tr> <th colspan="2">Tipo Filetto <i>Port type</i></th> </tr> </thead> <tbody> <tr> <td style="text-align: center;">N</td> <td>GAS</td> </tr> <tr> <td style="text-align: center;">S</td> <td>NPT</td> </tr> <tr> <td style="text-align: center;">S</td> <td>SAE</td> </tr> </tbody> </table>	Tipo Filetto <i>Port type</i>		N	GAS	S	NPT	S	SAE	<table border="1" style="font-size: 8px;"> <thead> <tr> <th colspan="2">Molla (bar) <i>Spring (bar)</i></th> </tr> </thead> <tbody> <tr> <td style="text-align: center;">4</td> <td>0.5</td> </tr> <tr> <td style="text-align: center;">4</td> <td>4</td> </tr> <tr> <td style="text-align: center;">8</td> <td>8</td> </tr> </tbody> </table>	Molla (bar) <i>Spring (bar)</i>		4	0.5	4	4	8	8	<table border="1" style="font-size: 8px;"> <thead> <tr> <th colspan="2">Foro calibrato <i>Calibrated hole</i></th> </tr> </thead> <tbody> <tr> <td style="text-align: center;">FO</td> <td>senza foro <i>without hole</i></td> </tr> <tr> <td style="text-align: center;">FO</td> <td>con foro (*) <i>with hole (*)</i></td> </tr> </tbody> </table>	Foro calibrato <i>Calibrated hole</i>		FO	senza foro <i>without hole</i>	FO	con foro (*) <i>with hole (*)</i>
Dimensione - <i>Dimension</i>																																																																										
Tipo-Type	GAS	NPT	SAE																																																																							
005	-	-	7/16-20																																																																							
01	1/4	1/4	-																																																																							
015	-	-	9/16-18																																																																							
02	3/8	3/8	3/4-16																																																																							
03	1/2	1/2	7/8-14																																																																							
04	3/4	3/4	1 1/16-12																																																																							
05	1	1	1 5/16-12																																																																							
06	1 1/4	1 1/4	1 5/8-12																																																																							
07	1 1/2	1 1/2	1 7/8-12																																																																							
Tenuta <i>Type</i>																																																																										
C	Cono <i>Poppet type</i>																																																																									
Tipo Filetto <i>Port type</i>																																																																										
N	GAS																																																																									
S	NPT																																																																									
S	SAE																																																																									
Molla (bar) <i>Spring (bar)</i>																																																																										
4	0.5																																																																									
4	4																																																																									
8	8																																																																									
Foro calibrato <i>Calibrated hole</i>																																																																										
FO	senza foro <i>without hole</i>																																																																									
FO	con foro (*) <i>with hole (*)</i>																																																																									

(\*) = indicare diametro foro  
(\*) = specify hole diameter

**ESEMPIO ORDINAZIONE - ORDERING CODE EXAMPLE**

**VUR 02 C N** VUR - Dimensione 02 - Filetto 3/8 NPT - Tenuta con otturatore - Molla 0,5 bar / VUR - 02 Dimension - 3/8 NPT Port thread - Poppet type - 0,5 bar spring set