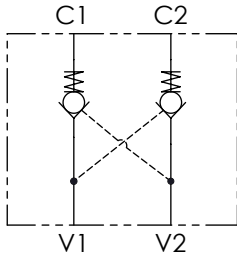


Schema idraulico - Hydraulic circuit



Dati tecnici - Technical data

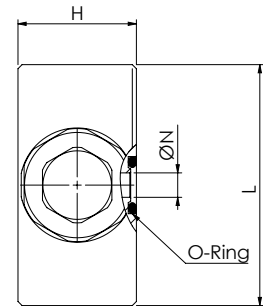
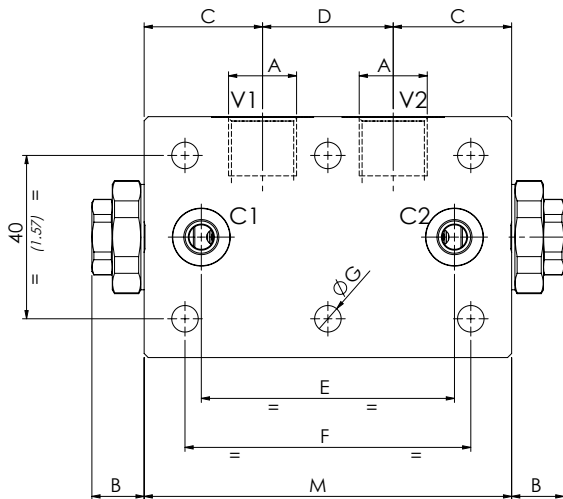
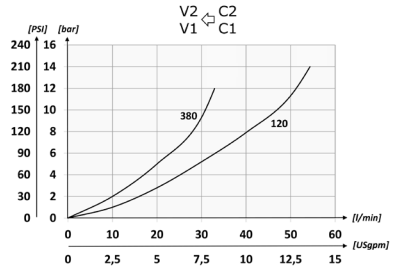
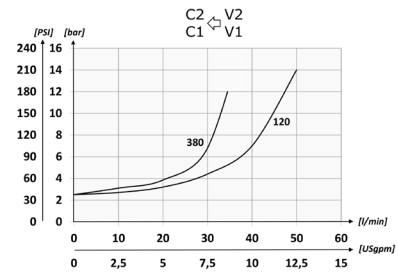
Olio idraulico/Mineral oil	ISO 6743/4 (DIN 51524)		
Viscosità olio/Oil viscosity	15-250 mm ² /s (15 to 250 cSt)		
Classe di contaminazione max con filtro Max contamination index with filter	ISO 4406:1999 Classe 19/17/14		
Temperatura dell'olio/Oil temperature	-20°C +80°C	-4°F + 176°F	
Temperatura ambiente/Ambient temperature	-20°C +50°C	-4°F + 122°F	
È indispensabile l'utilizzo di un filtro per proteggere la valvola (filtrazione consigliata 15 µm) It is necessary a filter use to protect the valve (advised filtration 15 µm)			
Trafilamento massimo Max leakage	0,25 cm ³ /min - 5 gocce/min	0,015 in ³ /min - 5 drops/min	

Codice ordinazione Ordering code

01	02	03	04	05
VRDF				

01	Valvole di blocco flangiata a doppio effetto (Double acting pilot check valves - flanged version)		VRDF
02	Dimensione (Size)	BSPP 3/8	380
		BSPP 1/2	120
03	Molla (Spring)	1 bar (14.5 PSI)	1
		6 bar (87 PSI) Standard	6
04	O-Ring sul pistone di pilotaggio (O-ring on pilot piston)	No o-ring	0
		con o-ring (with o-ring)	1
05	Rapporto di pilotaggio (Pilot ratio)	1:3,2 (solo per dimensione 120 - only for size 120)	32
		1:7	70

Performances



[mm
(Inches)]

Caratteristiche tecniche - Technical characteristics

Tipo Type	A	Portata max Max flow l/min-USgpm	Pressione max Max pressure bar/PSI	B	C	D	E	F	G	H	L	M	O-Ring	Peso approssimativo Approx weight kg/lb	Rapporto di pilotaggio Pilot ratio
VRDF380	BSPP 3/8	35 (9.2)	350 (5075)	12,8 (0.50)	29 (1.94)	32 (1.26)	62 (2.44)	70 (2.76)	6.5 (0.26)	34 (1.34)	59 (2.32)	90 (3.54)	9,19 x 2,62	1,11 (2.44)	1:7
VRDF120	BSPP 1/2	50 (13.2)		14.8 (0.58)	38 (1.50)	34 (1.34)	65 (2.56)	80 (3.15)	8.5 (0.33)		69 (2.72)	110 (4.33)	15,08 x 2,62	1,85 (4)	1:3,2 1:7