

# KHB ( BKH )、 KHM ( MKH ) 系列高压球阀

KHB(BKH)、 KHM ( MKH ) Series High Pressure Ball Valve

## 型号说明 Model Code

KHB-  $\frac{M27 \times 1.5}{1}$  -  $\frac{10}{2}$  -  $\frac{1}{3}$   $\frac{1}{4}$   $\frac{1}{5}$   $\frac{1}{6}$   $\frac{1}{7}$  -  $\frac{01}{8}$  -  $\frac{1}{9}$

- 1.系列代号：KHB ( BKH ) 系列-阀块型球阀DN04-25, KHM(MKH)系列-袖套型球阀 DN32-50；
- 2.连接代号：M\*\*、G\*\*、\*\*LR、\*\*SR、PT\*\*、NPT\*\*；
- 3.公称直径：04、06、08、10、13、16、20、25、32、40、50；
- 4.阀体、接头材料：1-45#、3-316不锈钢；
- 5.球芯、阀锁材料：1-45#、3-316不锈钢；
- 6.球封材料：1-POM ( 聚甲醛 )、2-PTFE(聚四氟乙烯)；
- 7.阀体与接头和阀锁处密封材料：1-NBR(丁晴橡胶)、2-FPM/FKM(氟橡胶)；
- 8.手柄形式：01-C型锌合金曲手柄、02-B型锌合金曲手柄、03-B型铸钢曲手柄、09-不带手柄；

9.表面处理：1-蓝白三价铬；

备注：压力参数对应产品的材料为碳钢。

材料1111为常规使用组合，PTFE材料使用时最高工作压力不超过100bar (其它特殊组合型式请咨询)。

- 1.Series Code:KHB ( BKH ) Series Valve block ball valve DN04-25 KHM(MKH) Series Sleeve type ball valve DN32-50;
- 2.Joint Code:M\*\*, G\*\*, \*\*LR, \*\*SR, PT\*\*, NPT\*\*;
- 3.Nominal Diameter:04, 06, 08, 10, 13, 16, 20, 25, 32, 40, 50;
- 4.Valve body/joint material:1-carbon steel, 3-316 stainless steel
- 5.Ball body/ Valve lock material:1-carbon steel, 3-316 stainless steel
- 6.Ball sealing material:1-POM 2-PTFE
- 7.Sealing material(Sealing material of joint/valve lock):1-NBR 2-FPM/FKM
- 8.Handle Type:01-C type zinc alloy crooked handle 02-B type zinc alloy crooked handle 03-B type casting steel crooked handle 09-without handle

9.Surface Treatment: 1-SILVER ZINC PLATED

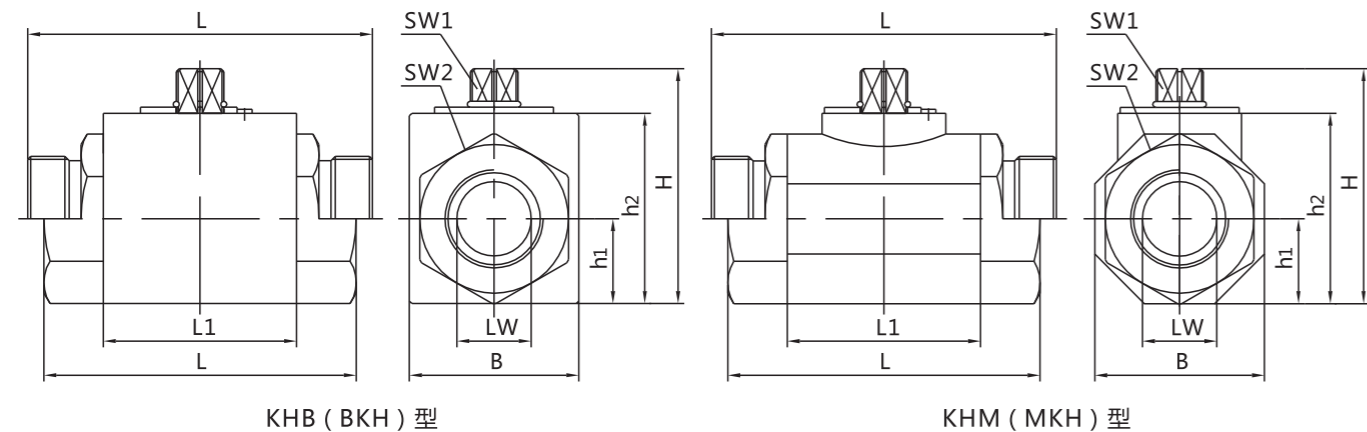
PS:The Material Pressure parameters corresponding to the product is carbon steel.

1111 is the normal mix ,the PN no more than 100bar when using PTFE. (other specifications please contact us)

## 图形符号 Symbol



## 外形尺寸 Overall Dimension



连接口略图 Connection port sketch	简略型号 Brief Model	PN (bar)	DN	LW	RA	d1	i	L	L1	B	H	h1	h2	SW1	SW2	
M 	KHB-M16×1.5	500	06	06	11	M16×1.5	11	69	40	26	45	13.5	33	09	22	
	KHB-M22×1.5	500	10	08	16	M22×1.5	12	76	42	32	49	16	36	09	27	
	KHB-M27×1.5	500	10	10	20	M27×1.5	12	76	42	32	49	16	36	09	27	
	KHB-M30×1.5	400	16	15	24	M30×1.5	13	84	48	38	61	19	45	09	32	
	KHB-M36×2	400	20	20	30	M36×2	15	103	60	48	70	25	55	12	41	
	KHB-M42×2	350	25	25	35	M42×2	18	116	65	57	79	28.5	64	12	50	
	KHM-M52×2	350	32	30	40	M52×2	20	149	84	75	101	37.5	84	14	60	
	KHM-M60×2	350	40	38	45	M60×2	22	174	91	85	112	42.5	95	14	70	
	G 	KHB-G1/8	500	04	06	/	G1/8	14	69	40	26	45	13.5	33	09	22
		KHB-G1/4	500	06	06	/	G1/4	14	69	40	26	45	13.5	33	09	22
KHB-G3/8		500	10	10	/	G3/8	14	72	42	32	49	16	36	09	27	
KHB-G1/2		500	13	12	/	G1/2	14	83	47	35	49	18	38	09	30	
KHB-G1/2		400	16	15	/	G1/2	16	83	48	38	61	19	45	09	32	
KHB-G3/4		400	20	20	/	G3/4	18	95	60	48	70	25	55	12	41	
KHB-G1		350	25	25	/	G1	21	113	65	57	79	28.5	64	12	50	
KHM-G1 1/4		350	32	32	/	G1 1/4	22	110	84	75	101	37.5	84	14	60	
KHM-G1 1/2		350	40	38	/	G1 1/2	24	130	91	85	112	42.5	95	14	70	
KHM-G2		350	50	48	/	G2	26	140	100	104	131	52	112.5	14	90	
NPT(PT) 	KHB-NPT1/8	500	04	06	/	NPT1/8	11	69	40	26	45	13.5	33	09	22	
	KHB-NPT1/4	500	06	06	/	NPT1/4	11	69	40	26	45	13.5	33	09	22	
	KHB-NPT3/8	500	10	10	/	NPT3/8	11	72	42	32	49	16	36	09	27	
	KHB-NPT1/2	500	13	12	/	NPT1/2	14	83	47	35	49	18	38	09	30	
	KHB-NPT1/2	400	16	15	/	NPT1/2	14	83	48	38	61	19	45	09	32	
	KHB-NPT3/4	400	20	20	/	NPT3/4	15	95	60	48	70	25	55	12	41	
	KHB-NPT1	350	25	25	/	NPT1	17	113	65	57	79	28.5	64	12	50	
	KHM-NPT1 1/4	350	32	30	/	NPT1 1/4	18	110	84	75	101	37.5	84	14	60	
	KHM-NPT1 1/2	350	40	38	/	NPT1 1/2	18	130	91	85	112	42.5	95	14	70	
	KHM-NPT2	350	50	48	/	NPT2	18	140	100	104	131	52	112.5	14	90	
LR 	KHB-06LR	500	04	04	06	M12×1.5	10	67	40	26	45	13.5	33	09	22	
	KHB-08LR	500	06	06	08	M14×1.5	10	67	40	26	45	13.5	33	09	22	
	KHB-10LR	500	06	08	10	M16×1.5	11	74	40	26	45	13.5	33	09	22	
	KHB-12LR	500	10	10	12	M18×1.5	11	74	42	32	49	16	36	09	27	
	KHB-15LR	500	13	12	15	M22×1.5	12.5	82	47	35	53	18	38	09	30	
	KHB-15LR	400	16	12	15	M22×1.5	12	82	48	38	61	19	45	09	32	
	KHB-18LR	500	13	12	18	M26×1.5	12.5	82	47	35	53	18	38	09	30	
	KHB-18LR	400	16	15	18	M26×1.5	12	82	48	38	61	19	45	09	32	
	KHB-22LR	400	20	19	22	M30×2	14	101	60	48	70	25	55	12	41	
	KHB-28LR	350	25	25	28	M36×2	14	108	65	57	79	28.5	64	12	50	
SR 	KHM-35LR	350	32	30	35	M45×2	16	141	84	75	101	37.5	84	14	60	
	KHM-42LR	350	40	36	42	M52×2	16	162	91	85	112	42.5	95	14	70	
	KHB-08SR	500	04	05	08	M16×1.5	12	73	40	26	45	13.5	33	09	22	
	KHB-10SR	500	06	06	10	M18×1.5	12	73	40	26	45	13.5	33	09	22	
	KHB-12SR	500	06	08	12	M20×1.5	12	76	40	26	45	13.5	33	09	22	
	KHB-14SR	500	10	10	14	M22×1.5	14	80	42	32	49	16	36	09	27	
	KHB-16SR	400	13	12	16	M24×1.5	14	86	47	35	53	18	38	09	30	
	KHB-16SR	500	16	12	16	M24×1.5	14	86	48	38	61	19	45	09	32	
	KHB-20SR	500	13	13	20	M30×2	16	90	47	35	53	18	38	09	30	
	KHB-20SR	400	16	15	20	M30×2	16	90	48	38	61	19	45	09	32	
KHB-25SR	400	20	20	25	M36×2	18	109	60	48	70	25	55	12	41		
KHB-30SR	350	25	25	30	M42×2	20	120	65	57	79	28.5	64	12	50		
KHM-38SR	350	32	30	38	M52×2	22	153	84	75	101	37.5	84	14	60		