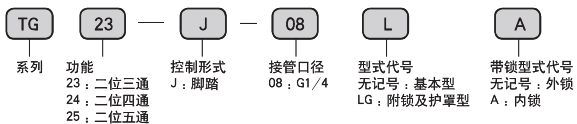


## TG系列二位三通、二位四通、二位五通脚踏阀

### ● 订购代码



### ● 特性

用脚踏踏的控制阀，广泛应用于各种气动系统中，操作力小，解放双手，二位三通的R、P口可互换，使常闭转化为常开。

### ■ 技术参数

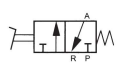
规格	功能	接管口径	通径 (mm)	工作介质	使用压力范围	动作方式	润 滑	介质温度
TG23-J-08	二位三通	G1/4	8	空气	0 ~ 0.8MPa	脚踏式	不需要	-5 ~ 60°C
TG24-J-08	二位四通	G1/4	8					
TG25-J-08	二位五通	G1/4	8					
TG25-J-08G	二位五通	G1/4	8					
TG25-J-08LG	二位五通	G1/4	8					

### ■ 外形尺寸

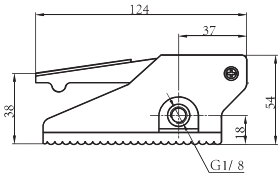
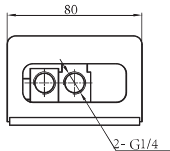
#### 二位三通脚踏阀



● TG23-J-08



● TG23-J-08



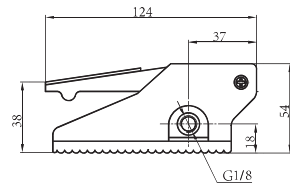
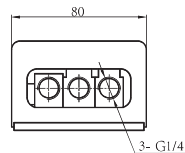
#### 二位四通脚踏阀



● TG24-J-08



● TG24-J-08



## TG系列脚踏阀

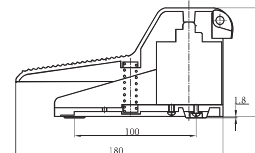
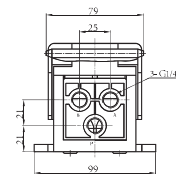
#### 二位五通脚踏阀



● TG25-J-08



● TG25-J-08



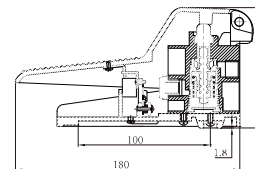
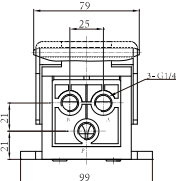
#### 二位五通带锁脚踏阀



● TG25-J-08L (外锁)  
● TG25-J-08LA (内锁)



● TG25-J-08L



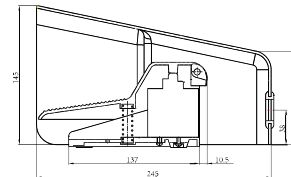
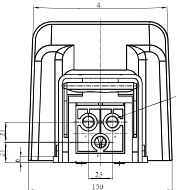
#### 二位五通带罩阀



● TG25-J-08G



● TG25-J-08G



#### 二位五通带锁、带罩阀



● TG25-J-08LG (外锁)  
● TG25-J-08LGA (内锁)



● TG25-J-08LG

