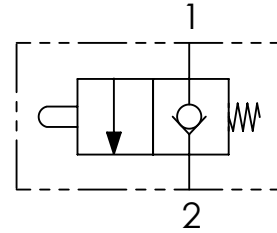


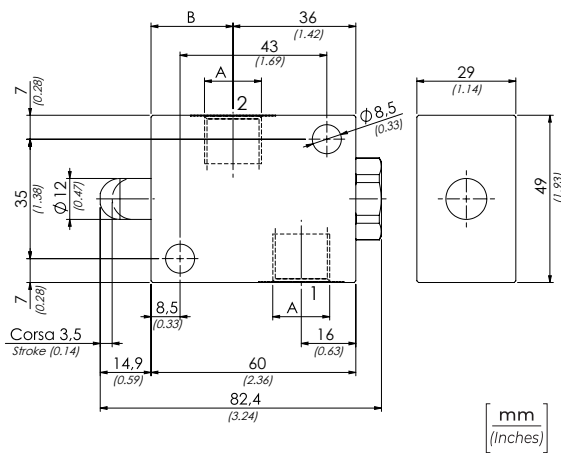
<b>CODICE ORDINAZIONE</b> ORDERING CODE	01	02
	<b>FCM</b>	

<b>01</b>	VALVOLE DI FINE CORSA NORMALMENTE CHIUSE (NORMALLY CLOSED END - STROKE VALVES)	<b>FCM</b>
<b>02</b>	DIMENSIONE (SIZE)	BSPP 1/4 <b>140N</b>
		BSPP 3/8 <b>380N</b>
		BSPP 1/2 <b>120N</b>

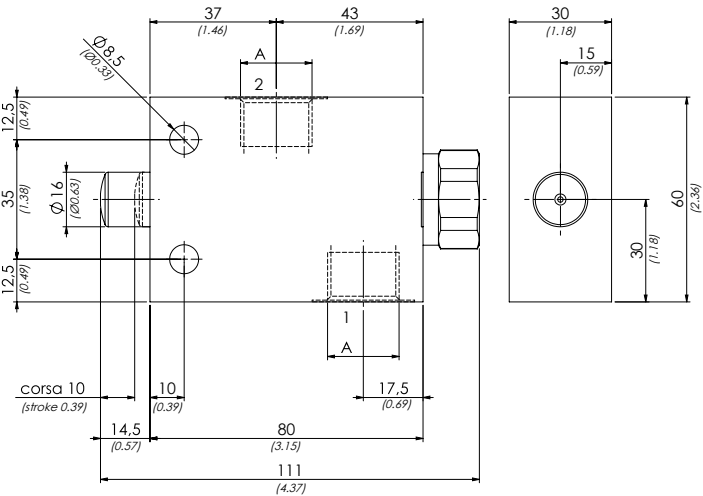
### SCHEMA IDRAULICO / HYDRAULIC CIRCUIT



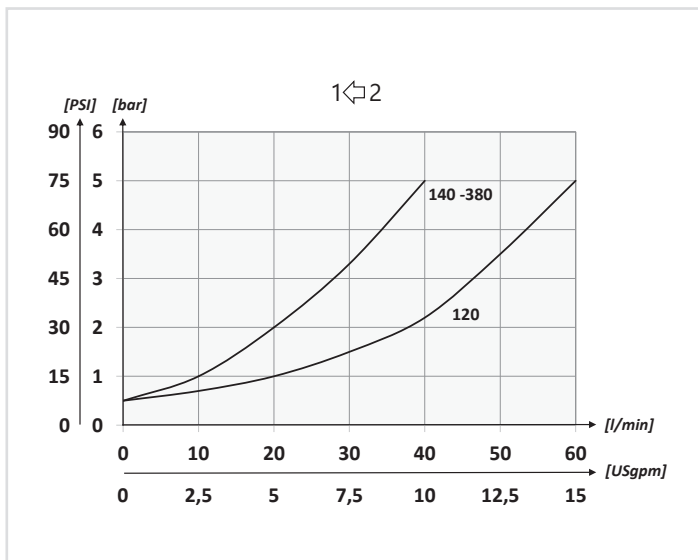
### FCM140N - FCM380N



### FCM120N



### PERFORMANCES



### DATI TECNICI / TECHNICAL DATA

Olio idraulico - Mineral oil	ISO 6743/4 (DIN 51524)
Viscosità olio - Oil viscosity	15-250 mm <sup>2</sup> /s (15 to 250 cSt)
Classe di contaminazione max Max contamination index	ISO 4406:1999 Classe 19/17/14
Temperatura dell'olio - Oil temperature	-20°C +80°C -4°F +176°F
Temperatura ambiente - Environment temperature	-20°C +50°C -4°F +122°F
È indispensabile l'utilizzo di un filtro per proteggere la valvola (filtrazione consigliata 15 µm) It is necessary a filter use to protect the valve (advised filtration 15 µm)	

### CARATTERISTICHE TECNICHE / TECHNICAL CHARACTERISTICS

TIPO TYPE	A	B	PORTATA MAX MAX FLOW l/min-USgpm	PRESSIONE MAX MAX PRESSURE bar-PSI	PESO APPROX APPROX WEIGHT kg-lbt
FCM140N	BSPP 1/4	26,5 (1.04)	40 (10.6)	350 (5075)	0,53 (1.16)
FCM380N	BSPP 3/8	24 (0.94)			0,50 (1.10)
FCM120N	BSPP 1/2	/	60 (15.8)	300 (4350)	1,01 (2.22)