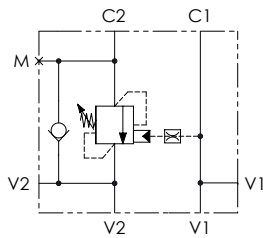


CODICE ORDINAZIONE
ORDERING CODE

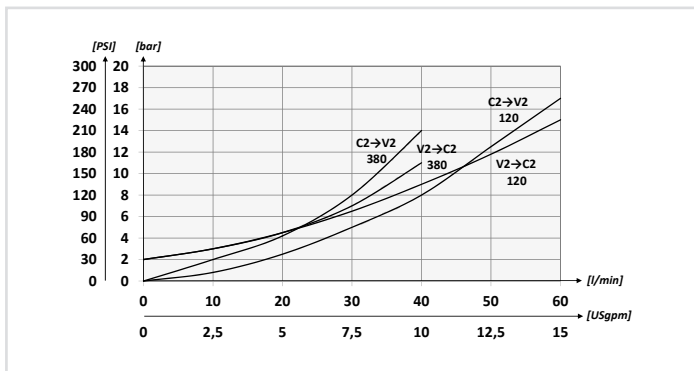
01	02	03	04	05
VBLF				

SCHEMA IDRAULICO / HYDRAULIC CIRCUIT



01	VALVOLE DI BILANCIAMENTO SINGOLE PER CENTRO APERTO - FLANGIATA DOPPIA (SINGLE COUNTERBALANCE VALVES FOR OPEN CENTER - DOUBLE FLANGED VERSION)			VBLF		
02	DIMENSIONE (SIZE)	BSPB 3/8		380		
		BSPB 1/2		120		
03	MOLLA (SPRING)	30/210 bar (435/3045 PSI)	Rp 1:4.25	78 bar/al giro (1131 PSI/turn)	Taratura standard (Std. setting) Q=5 l/min 200 bar (2900 PSI)	1
		60/350 bar (870/5075 PSI)	Rp 1:8.75	160 bar/al giro (2320 PSI/turn)		
	MOLLA (SPRING)	60/350 bar (870/5075 PSI)	Rp 1:4.25	135 bar/al giro (1958 PSI/turn)	Taratura standard (Std. setting) Q=5 l/min 350 bar (5075 PSI)	2
		60/350 bar (870/5075 PSI)	Rp 1:8.75	160 bar/al giro (2320 PSI/turn)		
04	MATERIALE (MATERIAL)	Acciaio + zincatura (Steel + zinc-plating)			S	
		Acciaio + zinco-nichel (Steel + zinc-nickel)			K	
05	RAPPORTO DI PILOTAGGIO (PILOT RATIO)	1:4.25 Standard			/	
		1:8.75			8	

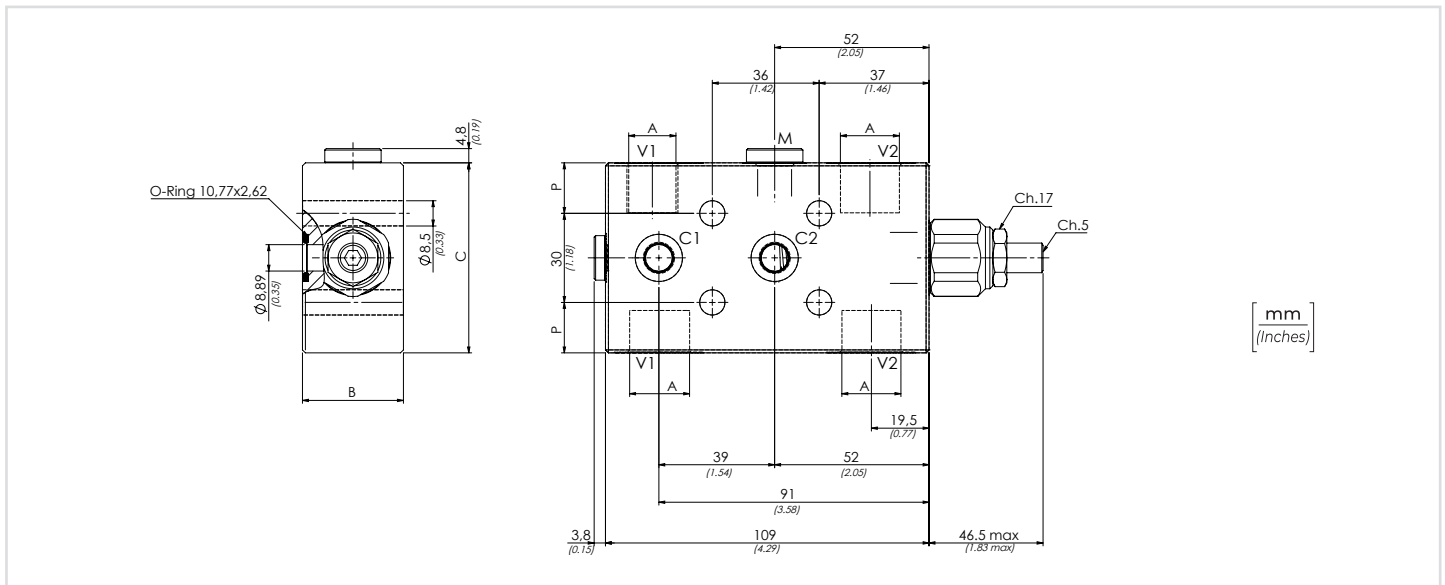
PERFORMANCES



Opzione: Tappo piombatura - Optional: Tamper proof cap **81300095**

DATI TECNICI / TECHNICAL DATA

Olío idraulico - Mineral oil	ISO 6743/4 (DIN 51524)
Viscosità olio - Oil viscosity	15-250 mm ² /s (15 to 250 cSt)
Classe di contaminazione max Max contamination index	ISO 4406:1999 Classe 19/17/14
Temperatura dell'olio - Oil temperature	-20°C +80°C -4°F +176°F
Temperatura ambiente - Environment temperature	-20°C +50°C -4°F +122°F
È indispensabile l'utilizzo di un filtro per proteggere la valvola (filtrazione consigliata 15 µm) It is necessary a filter use to protect the valve (advised filtration 15 µm)	



CARATTERISTICHE TECNICHE / TECHNICAL CHARACTERISTICS

TIPO TYPE	A	PORTATA MAX (l/min) MAX FLOW (USgpm)	PRESSIONE MAX (bar) MAX PRESSURE (PSI)	B	C	M	P	PESO APPROX (kg) APPROX WEIGHT (lb)
VBLF380	BSPB 3/8	40 (10.6)	350 (5075)	29 (1.14)	54 (2.13)	BSPB 1/4	12 (0.47)	1,17 (2.55)
VBLF120	BSPB 1/2	60 (15.9)		34 (1.34)	64 (2.52)		17 (0.67)	1,55 (3.37)