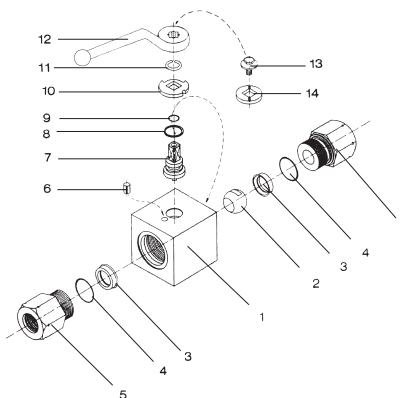


High-Pressure Block Body Ball Valve - Type BBV-2

A



List of Components

No.	Qty.	Description
1	1	Housing
2	1	Ball
3*	2	Seat
4*	2	Connector O-Ring
5	2	Connector
6	1	Stop Pin
7	1	Stem
8*	1	Thrust Ring
9*	1	Stem O-Ring
10	1	Cam Plate
11	1	Snap Ring
12	1	Lever
13	1	Stem Screw
14	1	Flow Indicator

Characteristics

Two-way high-pressure block body ball valves designed for use as on/off devices for hydraulic applications

Standard Construction

- Block body design for in-line assembly
- Supplied with off-set lever

Standard Materials

- Body:** Carbon Steel, zinc/iron-plated (gradual changeover of this series to Steel, zinc/nickel-plated)
- Ball:** Carbon Steel, hard chrome-plated
- Stem:** Carbon Steel
- Lever:** Zinc (STAUFF Sizes 02 to 08) Aluminium (STAUFF Size 10) Carbon Steel (STAUFF Sizes 12 to 24R)
- Ball seat:** Delrin® (POM)
- O-rings:** FKM/FPM (Viton®)

Standard Connections Styles / Sizes

- Female BSP thread (DIN ISO 228) >G 1-1/2 BSP
- Female NPT thread (ANSI B1.20.1) >1-1/2-11-1/2 NPT
- Female UN/UNF thread (SAE J 514) >1-7/8-12 UN (1-1/2" SAE)
- Male ORFS Connection (ISO 8434-3) >1-11/16-12 UN
- 24° Cone Connection (DIN 2353 / ISO 8434-1) >42L
- 24° Cone Connection (DIN 2353 / ISO 8434-1) >38S

Pressure Range

- Pressure range: up to 500 bar / 7250 PSI (depending on size and material combination of the ball valve)

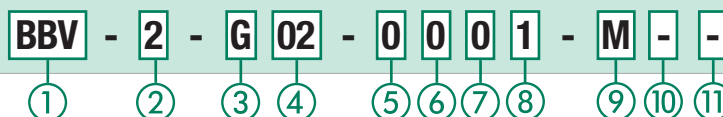
Temperature Range

- Operating temperature range: -20 °C ... +100 °C / -4 °F ... +212 °F

Options / Accessories

- Alternative lever designs/materials (see page 114)
- Locking devices (see pages 115-117)
- Actuator packages (see page 118)
- Limit switches (see page 118)
- Additional assembling threads / holes (see page 119)
- Stainless Steel body
- Stainless Steel ball and stem
- Special ball seat and O-ring materials available for lower/higher temperatures and more aggressive media
- Seal kits (including items marked by * in the above list)

Order Codes



① Type

High-Pressure Block Body Ball Valve **BBV**

② Number of Ports

Two Ports (Two-Way Ball Valve) **2**

③ Connection Style

Female BSP Thread (DIN ISO 228)	G
Female NPT Thread (ANSI B1.20.1)	N
Female UN/UNF Thread (SAE J 514)	U
Male ORFS Connection (ISO 8434-3)	ORFS
24° Cone Connection (Light / Heavy Series)	—

Please contact STAUFF for alternative connection styles.

④ Connection Size

STAUFF Size (according to dimension table) for connection styles G, N, U and ORFS:

02	04	06	08	10	12	16	20R	24R
-----------	-----------	-----------	-----------	-----------	-----------	-----------	------------	------------

Tube Size (according to dimension table) for 24° Cone Connection (Light Series):

06L	08L	10L	12L	15L	18L	22L	28L	35L	42L
------------	------------	------------	------------	------------	------------	------------	------------	------------	------------

Tube Size (according to dimension table) for 24° Cone Connection (Heavy Series):

06S	08S	10S	12S	14S	16S	20S	25S	30S	38S
------------	------------	------------	------------	------------	------------	------------	------------	------------	------------

Please contact STAUFF for alternative connection sizes.

⑤ Body Material / Surface Finishing

Carbon Steel, zinc/iron-plated	0
Carbon Steel, zinc/nickel-plated	8
Stainless Steel V4A (AISI 316Ti)	1

Alternative materials / surface finishings are available upon request. Contact STAUFF for further information.

⑥ Ball / Stem Material

Ball: Carbon Steel, hard chrome-plated	0
Stem: Carbon Steel	0
Ball / Stem: Stainless Steel V4A (AISI 316Ti)	1
Ball: Brass, hard chrome-plated	1
Stem: Carbon Steel	2

Alternative materials / surface finishings are available upon request. Contact STAUFF for further information.

⑦ Ball Seat Material

Delrin® (POM)	0
---------------	----------

Alternative materials are available upon request. Contact STAUFF for further information.

⑧ O-Ring Material

NBR (Buna-N®)	0
FKM/FPM (Viton®)	1
EPDM	3

Alternative materials are available upon request. Contact STAUFF for further information.

⑨ Manufacturing Code

Manufacturing code for all connection style	M
Manufacturing code for high-pressure version of connection styles G, N and U (STAUFF Size 16)	H

⑩ Lever Options

Supplied with standard lever (according to table)	—
Supplied without lever	O

Alternative levers can be ordered separately. Please see page 114 for further information.

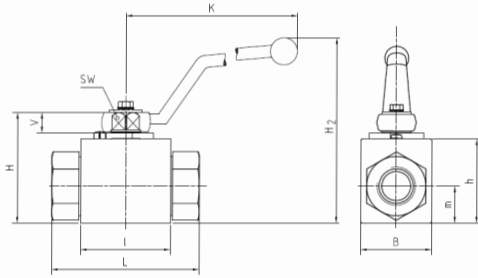
⑪ Accessories / Options

Supplied without accessories	—
Supplied with Locking Device LD1	LD1
Supplied with Locking Device LD2	LD2
Supplied with Locking Device LD3	LD3
Supplied with Locking Device LD4	LD4

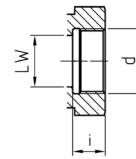
Please see page 115-119 for further information and options.



High-Pressure Block Body Ball Valve - Type BBV-2 Female BSP Thread (DIN ISO 228)



Female BSP Thread (DIN ISO 228)



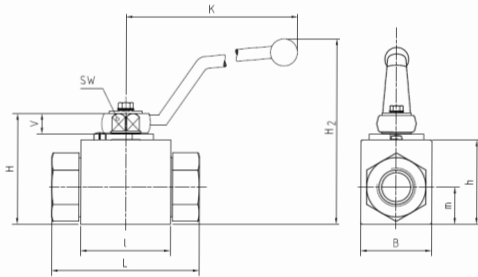
When ordering the standard option as indicated in the table below, the following materials will be supplied:

- Body, ball and stem: Carbon Steel
- Lever: Zinc (STAUFF Sizes 02 to 08)
Aluminium (STAUFF Size 10)
Carbon Steel (STAUFF Sizes 12 to 24R)
- Ball seat: Delrin® (POM)
- O-rings: FKM/FPM (Viton®)

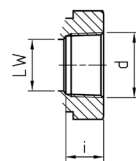
STAUFF Size	Thread Size d	Nominal Size DN	Dimensions (mm/in)											Nom. Pressure (bar/PSI)	Weight (kg/lbs)	Order Codes (Standard Option)	
			LW	L	I	B	H	h	m	V	SW	K	i	H2			
02	G 1/8 BSP	4	5 .20	69 2.70	40 1.57	26 1.02	47 1.84	33 1.29	13,5 .53	11 .43	9 .35	115 4.50	10 .39	82 3.23	500 7250	0,41 .90	BBV-2-G02-0001-M
04	G 1/4 BSP	6	6 .23	69 2.70	40 1.57	26 1.02	47 1.84	33 1.29	13,5 .53	11 .43	9 .35	115 4.50	14 .55	82 3.23	500 7250	0,40 .88	BBV-2-G04-0001-M
06	G 3/8 BSP	10	10 .39	72 2.82	43 1.68	32 1.25	52 2.04	38 1.49	17,5 .69	11 .43	9 .35	115 4.50	14 .55	87 3.43	500 7250	0,54 1.19	BBV-2-G06-0001-M
08	G 1/2 BSP	13	13 .51	83 3.25	48 1.88	35 1.37	54 2.11	40 1.57	19 .74	11 .43	9 .35	115 4.50	16,3 .64	89 3.50	500 7250	0,65 1.43	BBV-2-G08-0001-M
10	G 5/8 BSP	16	15 .59	83 3.25	48 1.88	38 1.49	63 2.47	46 1.80	19 .74	13 .51	12 .47	160 6.26	16 .63	106 4.17	420 6000	0,70 1.54	BBV-2-G10-0001-M
12	G 3/4 BSP	20	20 .78	95 3.72	62 2.43	49 1.92	75 2.94	57 2.23	24,5 .96	14 .55	14 .55	170 6.69	18 .70	126 4.96	420 6000	1,50 3.31	BBV-2-G12-0001-M
16	G 1 BSP	25	25 .98	113 4.42	66 2.58	58 2.27	83 3.25	65 2.55	29,5 1.16	14 .55	14 .55	170 6.69	20 .78	134 5.28	315 4500	2,20 4.85	BBV-2-G16-0001-M
16	G 1 BSP	25	25 .98	113 4.42	74 2.91	70 2.76	88 3.46	70 2.76	34,5 1.36	14 .55	14 .55	170 6.69	20 .78	139 5.47	420 6000	3,10 6.83	BBV-2-G16-0001-H
20R	G 1-1/4 BSP	25/32	25 .98	120 4.70	66 2.58	58 2.27	83 3.25	65 2.55	29,5 1.16	14 .55	14 .55	170 6.69	22 .86	134 5.28	315 4500	2,30 5.07	BBV-2-G20R-0001-M
24R	G 1-1/2 BSP	25/40	25 .98	130 5.09	66 2.58	58 2.27	83 3.25	65 2.55	29,5 1.16	14 .55	14 .55	170 6.69	24 .94	134 5.28	250 3600	2,60 5.73	BBV-2-G24R-0001-M

Please note the pressure ratings of the tube connections.

High-Pressure Block Body Ball Valve - Type BBV-2 Female NPT Thread (ANSI B1.20.1)



Female NPT Thread (ANSI B1.20.1)



When ordering the standard option as indicated in the table below, the following materials will be supplied:

- Body, ball and stem: Carbon Steel
- Lever: Zinc (STAUFF Sizes 02 to 08)
Carbon Steel (STAUFF Sizes 12 to 24R)
- Ball seat: Delrin® (POM)
- O-rings: FKM/FPM (Viton®)

STAUFF Size	Thread Size d	Nominal Size DN	Dimensions (mm/in)											Nom. Pressure (bar/PSI)	Weight (kg/lbs)	Order Codes (Standard Option)	
			LW	L	I	B	H	h	m	V	SW	K	i	H2			
02	1/8-27 NPT	4	5 .20	69 2.70	40 1.57	26 1.02	47 1.84	33 1.29	13,5 .53	11 .43	9 .35	115 4.50	10,5 .41	82 3.23	500 7250	0,30 .66	BBV-2-N02-0001-M
04	1/4-18 NPT	6	6 .23	69 2.70	40 1.57	26 1.02	47 1.84	33 1.29	13,5 .53	11 .43	9 .35	115 4.50	13,7 .54	82 3.23	500 7250	0,40 .88	BBV-2-N04-0001-M
06	3/8-18 NPT	10	10 .39	72 2.82	43 1.68	32 1.25	52 2.04	38 1.49	17,5 .69	11 .43	9 .35	115 4.50	13,5 .53	87 3.43	500 7250	0,50 1.10	BBV-2-N06-0001-M
08	1/2-14 NPT	13	13 .51	83 3.25	48 1.88	35 1.37	54 2.11	40 1.57	19 .74	11 .43	9 .35	115 4.50	17 .67	89 3.50	500 7250	0,75 1.65	BBV-2-N08-0001-M
12	3/4-14 NPT	20	20 .78	95 3.72	62 2.43	49 1.92	75 2.94	57 2.23	24,5 .96	14 .55	14 .55	170 6.69	18,3 .72	126 4.96	420 6000	1,63 3.57	BBV-2-N12-0001-M
16	1-11-1/2 NPT	25	25 .98	113 4.42	66 2.58	58 2.27	83 3.25	65 2.55	29,5 1.16	14 .55	14 .55	170 6.69	21,6 .85	134 5.28	315 4500	2,30 5.06	BBV-2-N16-0001-M
16	1-11-1/2 NPT	25	25 .98	113 4.42	74 2.91	70 2.76	88 3.46	70 2.76	34,5 1.36	14 .55	14 .55	170 6.69	20 .78	139 5.47	420 6000	3,16 6.97	BBV-2-N16-0001-H
20R	1-1/4-11-1/2 NPT	25/32	25 .98	120 4.70	66 2.58	58 2.27	83 3.25	65 2.55	29,5 1.16	14 .55	14 .55	170 6.69	22,1 .87	134 5.28	315 4500	2,51 5.52	BBV-2-N20R-0001-M
24R	1-1/2-11-1/2 NPT	25/40	25 .98	130 5.09	66 2.58	58 2.27	83 3.25	65 2.55	29,5 1.16	14 .55	14 .55	170 6.69	22,1 .87	134 5.28	250 3600	2,70 5.94	BBV-2-N24R-0001-M

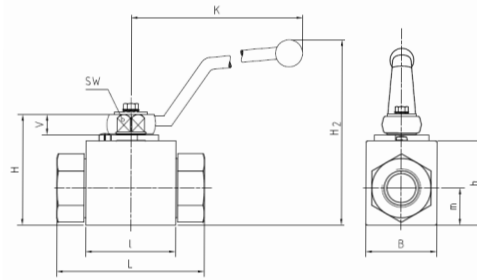
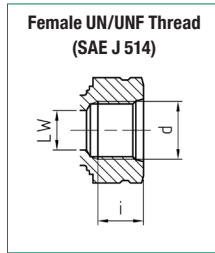


High-Pressure Block Body Ball Valve - Type BBV-2 Female UN/UNF Thread (SAE J 514)

A

When ordering the standard option as indicated in the table below, the following materials will be supplied:

- Body, ball and stem: Carbon Steel
- Lever: Zinc (STAUFF Sizes 04 to 08)
Carbon Steel (STAUFF Sizes 12 to 24R)
- Ball seat: Delrin® (POM)
- O-rings: FKM/FPM (Viton®)



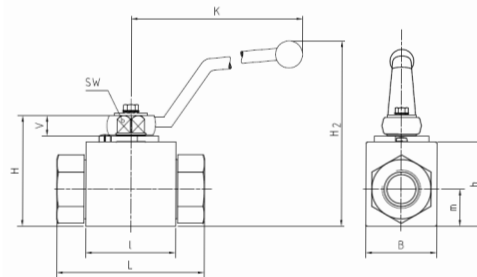
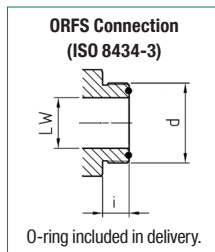
STAUFF Size	Thread Size d	Nominal Size DN	Dimensions (mm/in)											Nom. Pressure (bar/PSI)	Weight (kg/lbs)	Order Codes (Standard Option)	
			LW	L	I	B	H	h	m	V	SW	K	i	H2			
04	7/16-20 UNF (1/4" SAE)	6	6	69	40	26	47	33	13,5	11	9	115	14	82	500	0,40	BBV-2-U04-0001-M
			.23	2.70	1.57	1.02	1.84	1.29	.53	.43	.35	4.50	.55	3.23	7250	.88	
06	9/16-18 UNF (3/8" SAE)	10	10	72	43	32	52	38	17,5	11	9	115	14	87	500	0,50	BBV-2-U06-0001-M
			.39	2.82	1.68	1.25	2.04	1.49	.69	.43	.35	4.50	.55	3.43	7250	1.10	
08	3/4-16 UNF (1/2" SAE)	13	13	83	48	35	54	40	19	11	9	115	16,3	89	500	0,70	BBV-2-U08-0001-M
			.51	3.25	1.88	1.37	2.11	1.57	.74	.43	.35	4.50	.64	3.50	7250	1.54	
12	1-1/16-12 UN (3/4" SAE)	20	20	95	62	49	75	57	24,5	14	14	170	18	126	420	1,50	BBV-2-U12-0001-M
			.78	3.72	2.43	1.92	2.94	2.23	.96	.55	.55	6.69	.70	4.96	6000	3.31	
16	1-5/16-12 UN (1" SAE)	25	25	113	66	58	83	65	29,5	14	14	170	20	134	315	2,20	BBV-2-U16-0001-M
			.98	4.42	2.58	2.27	3.25	2.55	1.16	.55	.55	6.69	.78	5.28	4500	4.85	
16	1-5/16-12 UN (1" SAE)	25	25	121	74	70	88	70	34,5	14	14	170	20	139	420	2,20	BBV-2-U16-0001-H
			.98	4.76	2.91	2.76	3.46	2.76	1.36	.55	.55	6.69	.78	5.47	6000	4.85	
20R	1-5/8-12 UN (1-1/4" SAE)	25/32	25	120	66	58	83	65	29,5	14	14	170	20	134	315	2,50	BBV-2-U20R-0001-M
			.98	4.70	2.60	2.28	3.27	2.56	1.16	.55	.55	6.69	.78	5.28	4500	5.50	
24R	1-7/8-12 UN (1-1/2" SAE)	25/40	25	130	66	58	83	65	29,5	14	14	170	20	134	315	2,61	BBV-2-U24R-0001-M
			.98	5.09	2.60	2.28	3.27	2.56	1.16	.55	.55	6.69	.78	5.28	4500	5.74	

Please note the pressure ratings of the tube connections.

High-Pressure Block Body Ball Valve - Type BBV-2 O-Ring Face Seal Connection - Male Thread (ISO 8434-3)

When ordering the standard option as indicated in the table below, the following materials will be supplied:

- Body, ball and stem: Carbon Steel
- Lever: Zinc (STAUFF Sizes 04 to 08)
Aluminium (STAUFF Size 10)
Carbon Steel (STAUFF Sizes 12 and 16)
- Ball seat: Delrin® (POM)
- O-rings: FKM/FPM (Viton®)

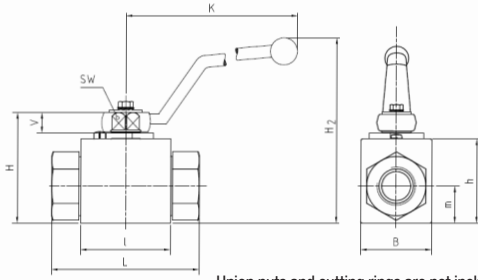


STAUFF Size	Thread Size d	Nominal Size DN	Dimensions (mm/in)											O-ring	Nom. Pressure (bar/PSI)	Weight (kg/lbs)	Order Codes (Standard Option)	
			LW	L	I	B	H	h	m	V	SW	K	i	H2				
04	9/16-18 UNF	6	4,5	73	40	26	47	33	13,5	11	9	115	10	82	7,65 x 1,78	500	0,37	BBV-2-ORFS04-0001-M
			.18	2.87	1.57	1.02	1.84	1.29	.53	.43	.35	4.50	.39	3.23	7250	.81		
05	11/16-16 UN	8	6,5	73	40	26	47	33	13,5	11	9	115	11	82	9,25 x 1,78	500	0,38	BBV-2-ORFS05-0001-M
			.26	2.87	1.57	1.02	1.84	1.29	.53	.43	.35	4.50	.43	3.23	7250	.83		
06	13/16-16 UN	10	9,5	78	43	32	52	38	17,5	11	9	115	13	87	12,42 x 1,78	500	0,50	BBV-2-ORFS06-0001-M
			.37	3.07	1.68	1.25	2.04	1.49	.69	.43	.35	4.50	.51	3.43	7250	1.10		
08	1-14 UNS	13	12,5	90	48	35	54	40	19	11	9	115	15,5	89	15,60 x 1,78	420	0,61	BBV-2-ORFS08-0001-M
			.49	3.54	1.88	1.37	2.11	1.57	.74	.43	.35	4.50	.61	3.50	6000	1.34		
10	1-3/16-12 UN	16	15,5	98	48	35	63	40	19	13	12	160	17	106	18,77 x 1,78	420	0,80	BBV-2-ORFS10-0001-M
			.61	3.86	1.88	1.37	2.47	1.57	.74	.51	.47	6.26	.67	4.17	6000	1.76		
12	1-7/16-12 UN	20	20,5	111	62	49	75	57	24,5	14	14	170	17,5	126	23,52 x 1,78	315	1,55	BBV-2-ORFS12-0001-M
			.81	4.37	2.43	1.92	2.94	2.23	.96	.55	.55	6.69	.69	4.96	4500	3.41		
16	1-11/16-12 UN	25	26	120	66	58	83	65	29,5	14	14	170	17,5	134	29,87 x 1,78	315	2,10	BBV-2-ORFS16-0001-M
			1.02	4.72	2.58	2.27	3.25	2.55	1.16	.55	.55	6.69	.69	5.28	4500	4.63		

Please note the pressure ratings of the tube connections.

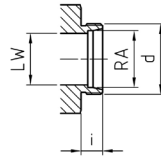


High-Pressure Block Body Ball Valve ■ Type BBV-2 24° Cone Connection ■ Light Series (DIN 2353 / ISO 8434-1)



Union nuts and cutting rings are not included in delivery.

24° Cone Connection (DIN 2353 / ISO 8434-1)



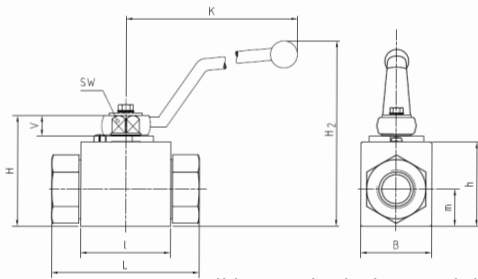
When ordering the standard option as indicated in the table below, the following materials will be supplied:

- Body, ball and stem: Carbon Steel
- Lever: Zinc (STAUFF Sizes 02 to 08)
Carbon Steel (STAUFF Sizes 12 to 24R)
- Ball seat: Delrin® (POM)
- O-rings: FKM/FPM (Viton®)

STAUFF Size	Tube/Thread Size d	Nominal Size DN	Dimensions (mm/m)													Nom. Pressure (^{bar} /psi)	Weight (^{kg} /lbs)	Order Codes (Standard Option)
			RA	LW	L	l	B	H	h	m	V	SW	K	i	H2			
02	06L / M12 x 1,5	4	6	5	67	40	26	47	33	13,5	11	9	115	10	82	500	0,36	BBV-2-06L-0001-M
			.24	.20	2.64	1.57	1.02	1.85	1.30	.53	.43	.35	4.53	.39	3.23	7250	.79	
04	08L / M14 x 1,5	6	8	6	67	40	26	47	33	13,5	11	9	115	10	82	500	0,37	BBV-2-08L-0001-M
			.31	.24	2.64	1.57	1.02	1.85	1.30	.53	.43	.35	4.53	.39	3.23	7250	.81	
05	10L / M16 x 1,5	8	10	8	74	40	26	47	33	13,5	11	9	115	11	82	500	0,38	BBV-2-10L-0001-M
			.39	.31	2.91	1.57	1.02	1.85	1.30	.53	.43	.35	4.53	.43	3.23	7250	.83	
06	12L / M18 x 1,5	10	12	10	74	43	32	52	38	17,5	11	9	115	11	87	500	0,50	BBV-2-12L-0001-M
			.47	.39	2.91	1.69	1.26	2.05	1.50	.69	.43	.35	4.53	.43	3.43	7250	1.10	
08	15L / M22 x 1,5	13	15	13	82	48	35	54	40	19	11	9	115	12	89	500	0,61	BBV-2-15L-0001-M
			.59	.51	3.23	1.89	1.38	2.13	1.57	.75	.43	.35	4.53	.47	3.50	7250	1.34	
08	18L / M26 x 1,5	13	18	13	82	48	35	54	40	19	11	9	115	12	89	500	0,60	BBV-2-18L-0001-M
			.71	.51	3.23	1.89	1.38	2.13	1.57	.75	.43	.35	4.53	.47	3.50	7250	1.32	
12	22L / M30 x 2	20	22	20	101	62	49	75	57	24,5	14	14	170	14	126	420	1,49	BBV-2-22L-0001-M
			.87	.79	3.98	2.44	1.93	2.95	2.24	.96	.55	.55	6.69	.55	4.96	6000	3.33	
16	28L / M36 x 2	25	28	25	108	66	58	83	65	29,5	14	14	170	14	134	315	2,00	BBV-2-28L-0001-M
			1.10	.98	4.25	2.60	2.28	3.27	2.56	1.16	.55	.55	6.69	.55	5.28	4500	4.41	
20R	35L / M45 x 2	25/32	35	25	112	66	58	83	65	29,5	14	14	170	16	134	315	2,12	BBV-2-35LDN25-0001-M
			1.38	.98	4.41	2.60	2.28	3.27	2.56	1.16	.55	.55	6.69	.63	5.28	4500	4.66	
24R	42L / M52 x 2	25/40	42	25	112	66	58	83	65	29,5	14	14	170	16	134	315	2,27	BBV-2-42LDN25-0001-M
			1.65	.98	4.41	2.60	2.28	3.27	2.56	1.16	.55	.55	6.69	.63	5.28	4500	4.99	

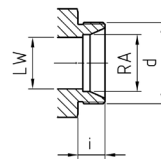
Please note the pressure ratings of the tube connections.

High-Pressure Block Body Ball Valve ■ Type BBV-2 24° Cone Connection ■ Heavy Series (DIN 2353 / ISO 8434-1)



Union nuts and cutting rings are not included in delivery.

24° Cone Connection (DIN 2353 / ISO 8434-1)



When ordering the standard option as indicated in the table below, the following materials will be supplied:

- Body, ball and stem: Carbon Steel
- Lever: Zinc (STAUFF Sizes 02 to 08)
Aluminium (STAUFF Size 10)
Carbon Steel (STAUFF Sizes 12 to 24R)
- Ball seat: Delrin® (POM)
- O-rings: FKM/FPM (Viton®)

STAUFF Size	Tube/Thread Size d	Nominal Size DN	Dimensions (mm/m)													Nom. Pressure (^{bar} /psi)	Weight (^{kg} /lbs)	Order Codes (Standard Option)
			RA	LW	L	l	B	H	h	m	V	SW	K	i	H2			
02	08S / M16 x 1,5	4	8	5	73	40	26	47	33	13,5	11	9	115	10	82	500	0,38	BBV-2-08S-0001-M
			.31	.20	2.87	1.57	1.02	1.85	1.30	.53	.43	.35	4.53	.39	3.23	7250	.84	
04	10S / M18 x 1,5	6	10	6	73	40	26	47	33	13,5	11	9	115	10	82	500	0,39	BBV-2-10S-0001-M
			.39	.24	2.87	1.57	1.02	1.85	1.30	.53	.43	.35	4.53	.39	3.23	7250	.86	
05	12S / M20 x 1,5	8	12	8	76	40	26	47	33	13,5	11	9	115	11	82	500	0,39	BBV-2-12S-0001-M
			.47	.31	2.99	1.57	1.02	1.85	1.30	.53	.43	.35	4.53	.43	3.23	7250	.86	
06	14S / M22 x 1,5	10	14	10	80	43	32	52	38	17,5	11	9	115	11	87	500	0,50	BBV-2-14S-0001-M
			.55	.39	3.15	1.69	1.26	2.05	1.50	.69	.43	.35	4.53	.43	3.43	7250	1.10	
08	16S / M24 x 1,5	13	16	13	86	48	35	54	40	19	11	9	115	12	89	500	0,60	BBV-2-16S-0001-M
			.63	.51	3.39	1.89	1.38	2.13	1.57	.75	.43	.35	4.53	.47	3.50	7250	1.32	
08	20S / M30 x 2	13	20	15	90	48	38	54	46	19	11	9	115	12	89	500	0,60	BBV-2-20SDN13-0001-M
			.79	.59	3.54	1.89	1.50	2.13	1.81	.75	.43	.35	4.53	.47	3.50	7250	1.32	
10	20S / M30 x 2	16	20	13	90	48	35	54	40	19	13	12	160	16	106	420	0,80	BBV-2-20S-0001-M
			.79	.51	3.54	1.89	1.38	2.13	1.57	.75	.51	.47	6.26	.63	4.17	6000	1.76	
12	25S / M36 x 2	20	25	20	109	62	49	75	57	24,5	14	14	170	18	126	420	1,55	BBV-2-25S-0001-M
			.98	.79	4.29	2.44	1.93	2.95	2.24	.96	.55	.55	6.69	.71	4.96	6000	3.41	
16	30S / M42 x 2	25	30	25	120	66	58	75	65	29,5	14	14	170	20	134	315	2,10	BBV-2-30S-0001-M
			1.18	.98	4.72	2.60	2.28	2.95	2.56	1.16	.55	.55	6.69	.79	5.28	4500	4.63	
20R	38S / M52 x 2	25/32	38	25	124	66	58	83	65	29,5	14	14	170	22	134	315	2,30	BBV-2-38SDN25-0001-M
			1.50	.98	4.88	2.60	2.28	3.27	2.56	1.16	.55	.55	6.69	.87	5.28	4500	5.07	

Please note the pressure ratings of the tube connections.

