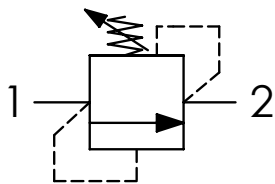




SCHEMA IDRAULICO / HYDRAULIC CIRCUIT

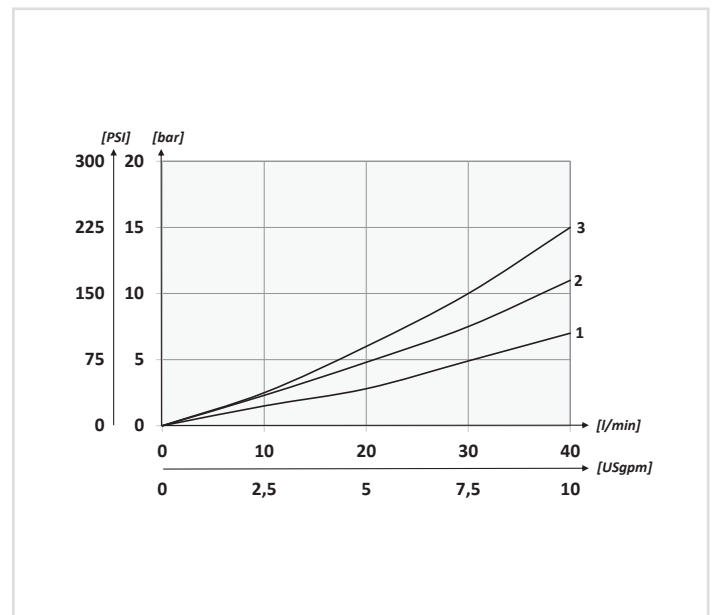


CODICE ORDINAZIONE
ORDERING CODE

	01	02	03
VMD8			

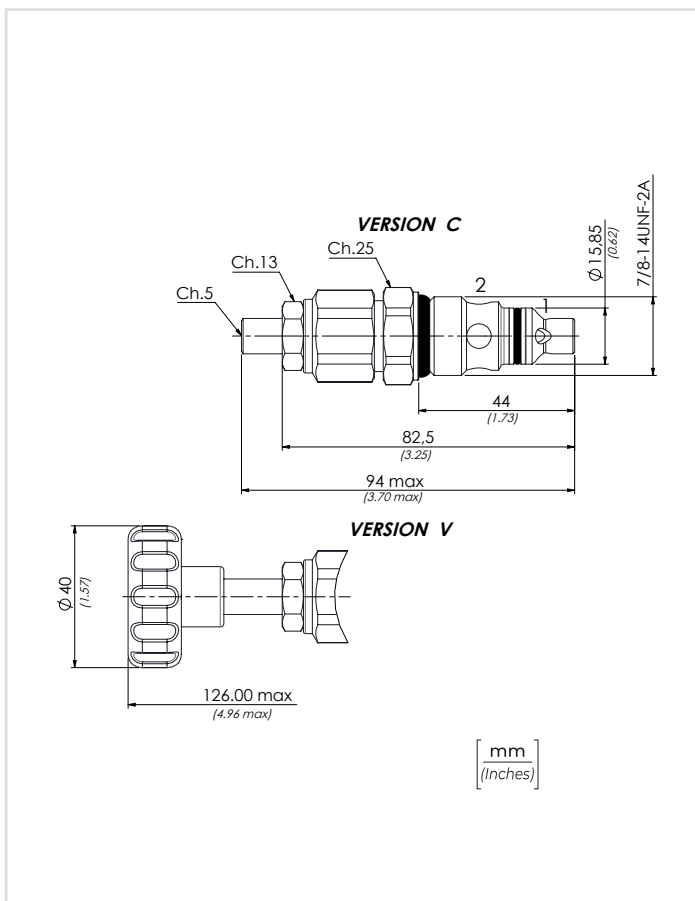
01	VALVOLE LIMITATRICI DI PRESSIONE DIRETTE SAE 10 (SAE10 DIRECT ACTING PRESSURE RELIEF VALVES)	VMD8	
02	REGOLAZIONE (SETTING)	Chiave (Hex socket screw) Opzione: Tappo piombatura (Optional: Tamper proof cap) 81300095	C
		Volantino (Handknob) Tipo (Type) 81300023	V
03	MOLLA (SPRING) 10/90 bar (145/1305 PSI)	20 bar/al giro (290 PSI/turn)	1
	MOLLA (SPRING) 20/210 bar (290/3045 PSI)	48 bar/al giro (696 PSI/turn)	2
	MOLLA (SPRING) 70/350 bar (1015/5075 PSI)	85 bar/al giro (1233 PSI/turn)	3

PERFORMANCES



DATI TECNICI / TECHNICAL DATA

Olio idraulico - Mineral oil	ISO 6743/4 (DIN 51524)
Viscosità olio - Oil viscosity	15-250 mm²/s (15 to 250 cSt)
Classe di contaminazione max Max contamination index	ISO 4406:1999 Classe 19/17/14
Temperatura dell'olio - Oil temperature	-20°C +80°C -4°F + 176°F
Temperatura ambiente - Environment temperature	-20°C +50°C -4°F + 122°F
È indispensabile l'utilizzo di un filtro per proteggere la valvola (filtrazione consigliata 15 µm) It is necessary a filter use to protect the valve (advised filtration 15 µm)	



CARATTERISTICHE TECNICHE / TECHNICAL CHARACTERISTICS

TIPO TYPE	PORTATA MAX (l/min) MAX FLOW (USgpm)	PRESSIONE MAX (bar) MAX PRESSURE (PSI)	PESO APPROX (kg) APPROX WEIGHT (lbt)	COPIA DI SERRAGGIO TIGHTENING TORQUE Nm-lbt ft	CAVITÀ CAVITY
VMD8	40 (10.6)	350 (5075)	0,17 (0.37)	41-47 (30-35)	SAE10/2