



## GODO TRADING COMPANY LIMITED

Head Office: Hoang Quoc Viet Street, Cau Giay District, Ha Noi City

Hotline: +84 96 99 28 169

Email: [Hanoi@bommanggodo.com](mailto:Hanoi@bommanggodo.com)

Website: [www.bommanggodo.com](http://www.bommanggodo.com)

### Branches in Ho Chi Minh City

Add: Quang Trung Street, Go Vap District, Ho Chi Minh City

Hotline: +84 978 04 6786

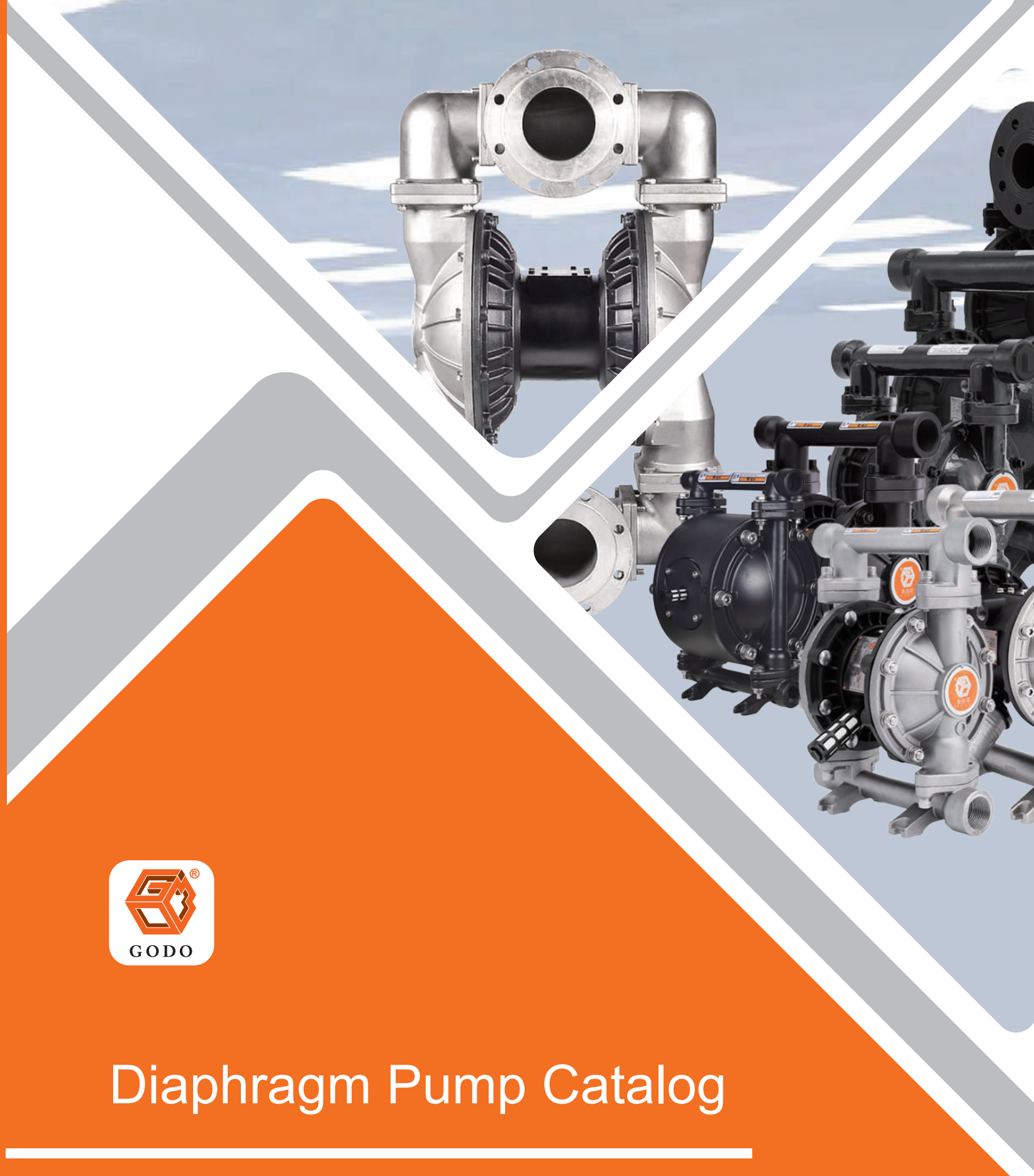
Email: [Sales@bommanggodo.com](mailto:Sales@bommanggodo.com)



# Diaphragm Pump Catalog



GODO TRADING COMPANY LIMITED





# Development history

Integrity innovation, sustainable development.

- In 2020  
GODO manufacturing Co.,Ltd. was certified as a national high-tech enterprise.  
15,000m<sup>2</sup> new plant was completed in Jiashan county.
- In 2019  
GODO manufacturing Co.,Ltd was awarded the "Top Ten Specialized Special New Enterprises" and "Demonstration Enterprise of Technological Innovation and Achievement Transformation" title.  
The number of domestic branches under the Bianfeng Machinery Group Co.,Ltd reaches 30.
- In2018  
The total number of enterprise patents exceeded 50.  
The first overseas branch—Vietnam Hanoi branch was established.
- In2016  
Bianfeng Machinery Group Co.,Ltd was formally established.  
The Production base in Xitang town,Jiashan county was established.
- In2015  
Shanghai Bianfeng Pumps Manufacturing Co.,Ltd obtained the national high-tech enterprise certification.  
The pneumatic diaphragm pump series have obtained explosion-proof certification.  
Diaphragm pump products have obtained the EU CE certification.
- In2013  
Bianfeng Pump Manufacturing Co.,Ltd passed the 1S09001 international quality system certification.
- In2009  
GODO's third-generation diaphragm pump was successfully put into the market.
- In2005  
Shanghai Bianfeng Pump Manufacturing Co., Ltd. was formally registered and established.
- In2000  
Bianfeng's second-generation pneumatic diaphragm pump came out.
- In1990  
The Bianfeng's predecessors took the lead in establishing a diaphragm pump processing workshop in China.



## ABOUT US

Bianfeng Machinery Group Co., Ltd., the predecessor of Shanghai Bianfeng Pump Manufacturing Co., Ltd., is a Chinese leading professional manufacturer engaged in researching, developing, manufacturing, sales and service of diaphragm pumps. Since the establishment of the company, the products have been continuously improved and optimized. With more than 30 years of experience and technology, successfully launched the third-generation pneumatic diaphragm pump (QBY3/BFQ) series, the third-generation electric diaphragm pump (DBY3/BFD) series and upgraded products. The products have high quality and good price, and are widely used in the fields of chemical industry, environmental protection, oil, pharmaceutical, food, metallurgy, papermaking, electric power, printing and dyeing, etc.

The company has passed the ISO9001 international quality system certification, GODO products obtained national explosion-proof product qualification certification and EU CE certification. Bianfeng Machinery Group's branches Bianfeng Pump Industry CO.,Ltd and GODO Manufacturing Co.,Ltd won the title of national "high-tech enterprise". By 2021, Bianfeng Machinery Group and all branches have obtained more than 60 patents. After moving the production base to Jiashan, our company has been commended by the local government for many times and has become a representative enterprise of local scientific and technological innovation.

The third-generation pneumatic diaphragm pump (QBY3) series developed by our company is reasonable in design and has the advantages of no seal, explosion-proof, low-shear, easy maintenance, allowable idling, lightness, self-priming, and multiple material selection.

While upgrading and researching and developing products, we take "making every project (customer) be a model project for GODO products" as our service goal. The company has established a relatively sound marketing service system across the country with 28 domestic branches and 2 overseas branches, provide active, fast, comprehensive and meticulous services in various service links such as product selection, troubleshooting, and after-sales maintenance. In addition, the company has established customer files and 24-hour rapid response systems. Strive to make every project (customer) be a model project for GODO products.

With the full support of customers, Bianfeng Machinery Group will continue to improve the technological content of fluid machinery and create a more brilliant tomorrow.



**Wisdom leads the times, faith wins the future.**

**GODO Brand  
Always Moving Forward**

## DIRECTORY

Pneumatic diaphragm pump .....	01-48
Scope of application .....	01-02
Superiorities .....	03-04
Designation .....	05-06
QBY4-10-15 .....	07-08
QBY3-20-25 .....	09-16
BFQ-25 .....	17-20
QBY3-32-40 .....	21-26
BFQ-40 .....	27-28
QBY3-50-65 .....	29-34
BFQ-50 .....	35-36
QBY3-80-100 .....	37-42
BFQ-80 .....	43-44
QBY3-125 .....	45-48
Electric diaphragm pump .....	49-86
Scope of application .....	49-50
Superiorities .....	51-52
DBY3-10-15 .....	53-58
BFD-25 .....	59-60
DBY3-32-40 .....	61-66
BFD-40 .....	67-68
DBY3-50-65 .....	69-74
BFD-50 .....	75-76
DBY3-80-100 .....	77-80
BFD-80 .....	81-82
DBY3-125 .....	83-86
Related products .....	87-88
Anti-corrosion parameter list of wetted parts .....	89-90



## SCOPE OF APPLICATION



DBY3/BFD series electric diaphragm pump mainly uses cycloid reducer technology. The crank slider mechanism drives the double diaphragms to do reciprocating motion, which makes the working chamber volume changes occur alternately so as to keep the liquid sucking and discharging. Meanwhile, nowadays, due to the breakthrough of diaphragm materials, more and more international industrialized countries have adopted this type of pump, which replace part of the centrifugal pumps and screw pumps. They are widely applied to petro-chemical, ceramic and metallurgical industries.

## Advantages

- Self-priming ability of more than 7 m without irrigation water.
- Good performance, particles below 10mm, slurry, etc. can effortlessly pass through.
- Since the diaphragm is separated from the transmission medium and transmission machinery, the media will not be leaked out. And the pump itself is unsealed, which greatly extended service life. Depending on the medium, the diaphragm can be divided into santoprene, teflon, PTFE, etc., which can meet different customer needs.
- Medium flows through the pump part, according to customer requirements, are divided into cast steel, nodular cast iron, stainless steel, aluminum alloy, PP, PVDF, Motors can be divided into ordinary and explosion-proof.

- A variety of toxic, flammable, volatile liquid.
- Acids, alkalis, corrosive liquids.
- High temperature media up to 150°C.
- As a variety of filter first-level pressure device.
- Recovering and recycling of hot water.
- Loading and unloading of tankers, oil depots and oil.
- Pickles, jam, mashed potatoes, chocolate, etc.
- Pumping paint, rubber and paint binders.
- Porcelain, glaze, cement, grout and slurry.
- Latex rubber pulp, organic solvents and fillers.
- Pumping sewage and residual oil from cruises or barges.
- Hops and yeast slurry, syrup, molasses.
- Pumping of sewage and sediment in mines, tunnels and sewers.
- The delivery of a variety of special media.

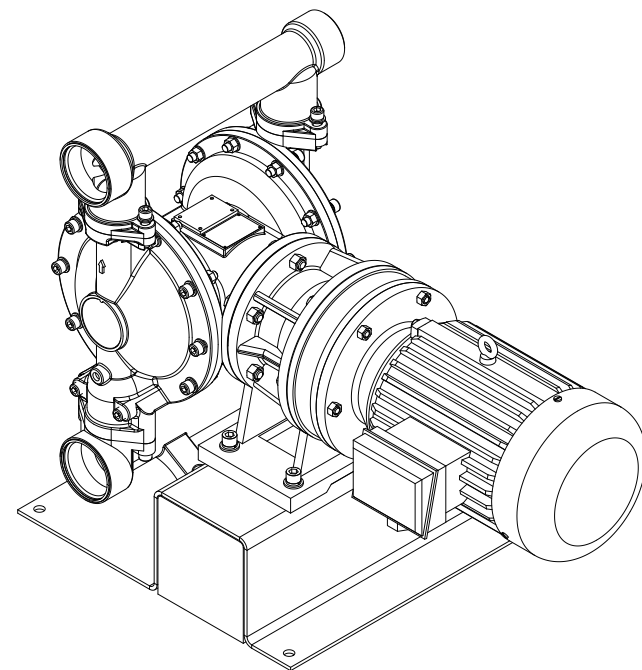
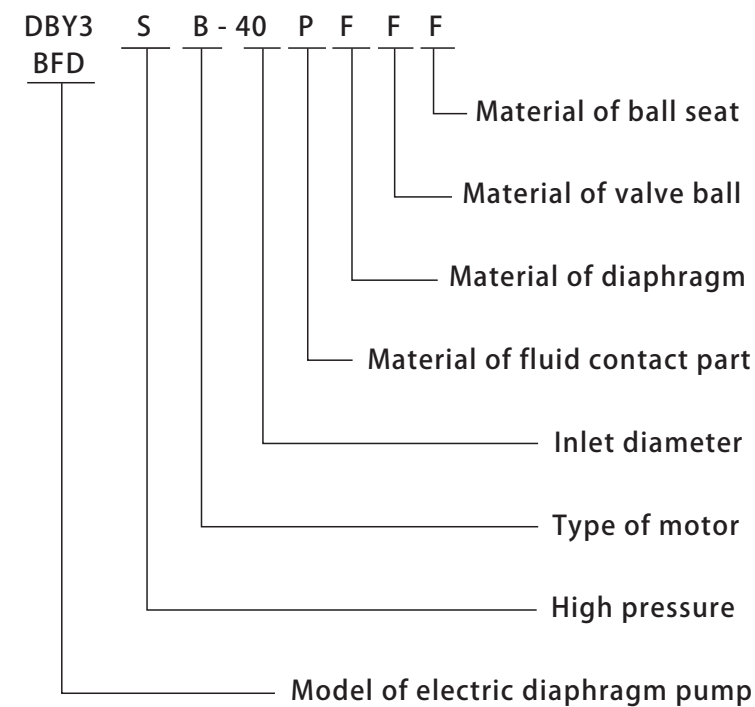






# DESIGNATION

## Designation



# SUPERIORITIES

## Outlet manifold

Outlet manifold: It is in the form of double-size diameter, which can connect two models of water pipe. Stainless steel, aluminum alloy, cast steel and polypropylene materials are available for this accessory.

## Stand column

Stand column: Anti-corrosive, leak-resistant, convient for clean. Overcurrent parts and air chamber, which are dealt with special processes, can totally withstand the poor working environment. Stainless steel, aluminum alloy, cast steel and polypropylene materials are available for this accessory..

## Central body

Central body: Anti-corrosive, leak-resistant, convient for clean. Overcurrent parts and air chamber, which are dealt with special processes, can totally withstand the poor working environment.

## Inlet manifold

Inlet manifold: It is in the form of double-size diameter, which can connect two models of water pipe. Stainless steel, aluminum alloy, cast steel and polypropylene materials are available for this accessory.

## Motor

Motor: A high performance motor.

## Copper ring

Copper ring: More reliable on wear resistance and make sure a longer life for the connecting rod axis.

## Connecting rod axis

Connecting rod axis: Reasonable size and processing technology make sure a longer life for the connecting rod axis, as well as make the transmission more accurate.

## Diaphragm

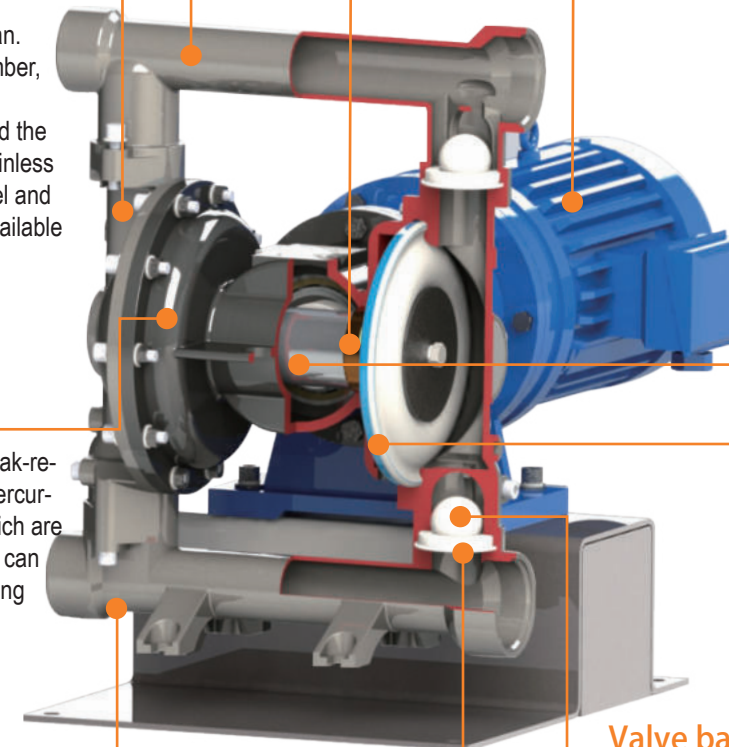
Diaphragm: It is advantaged of excellent sealing properties, wear resistance, as well as corrosion resistance. In a result, it can be useful in a variety of harsh environments.

## Valve ball

Valve ball: High strength, impact resistance, high-precision processing technology guarantees a higher tightness to improve the overall performance of the pump.

## Ball seat

Ball seat: Impact resistance, corrosion resistance and good sealing performance, makes the seat being able to withstand harsh media environment.







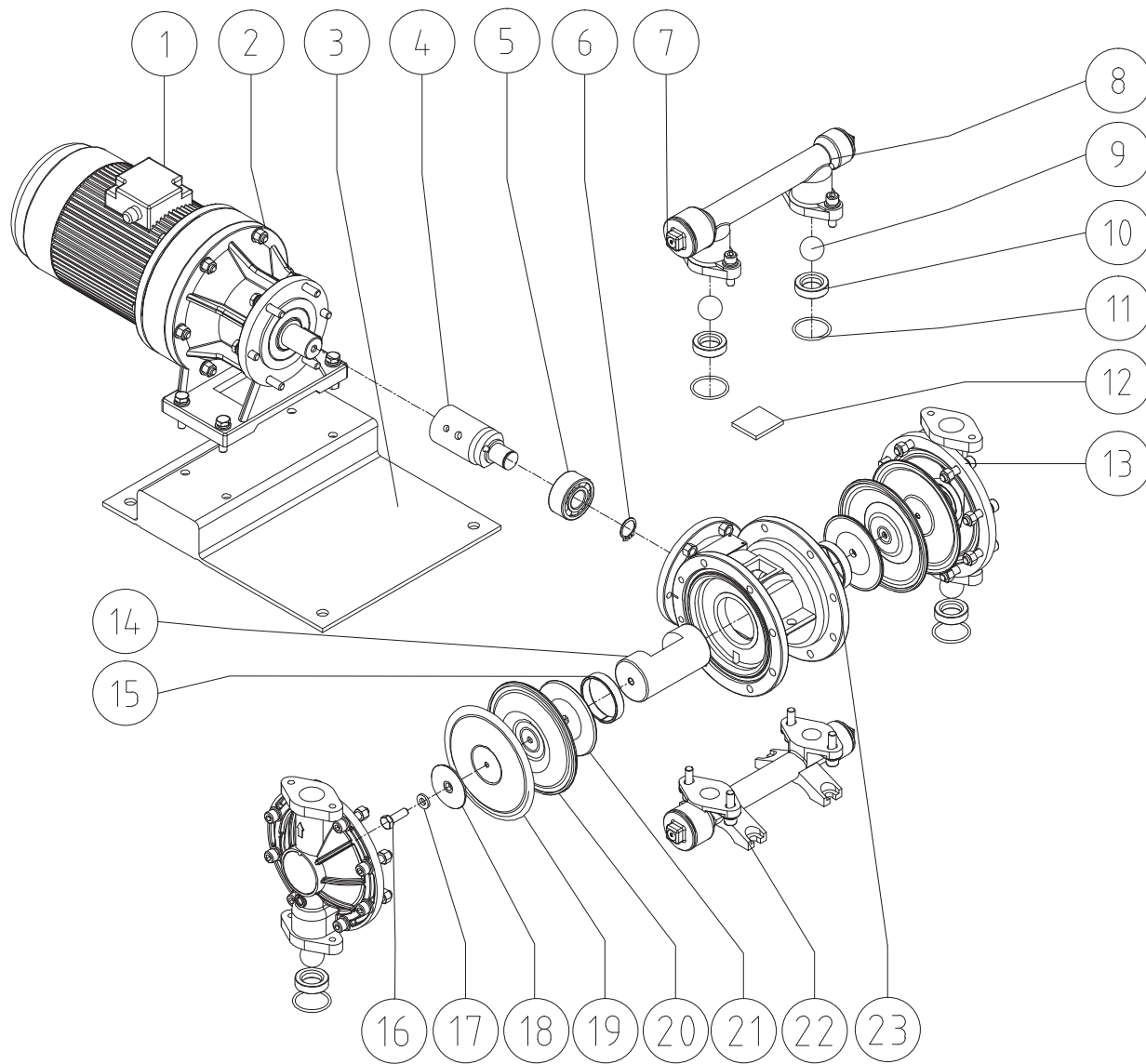
# DBY3-10 DBY3-15 Stainless steel / Cast steel

## Specifications

	DBY3-15	DBY3S-15
Max. Flow Rate	12.8 lpm	12.8 lpm
Max. Head	40 m	70 m
Max. Suction Height	3 m	3 m
Max. Working Pressure	4 bar	7 bar
Fluid Inlet/Outlet Size	DN15 (1/2" )	DN15 (1/2" )
Max. Permitted Grain	2.5 mm	2.5 mm
Outlet Pressure	0.4 Mpa	0.7 Mpa
Motor Power	0.55 kw	0.75 kw
Every Reciprocating Flow	0.15 L	0.15 L
Max. Reciprocating Speed	85 cpm	85 cpm
Pump body structure materials: Cast steel Nodular cast iron Aluminum alloy PP Stainless steel PVDF		



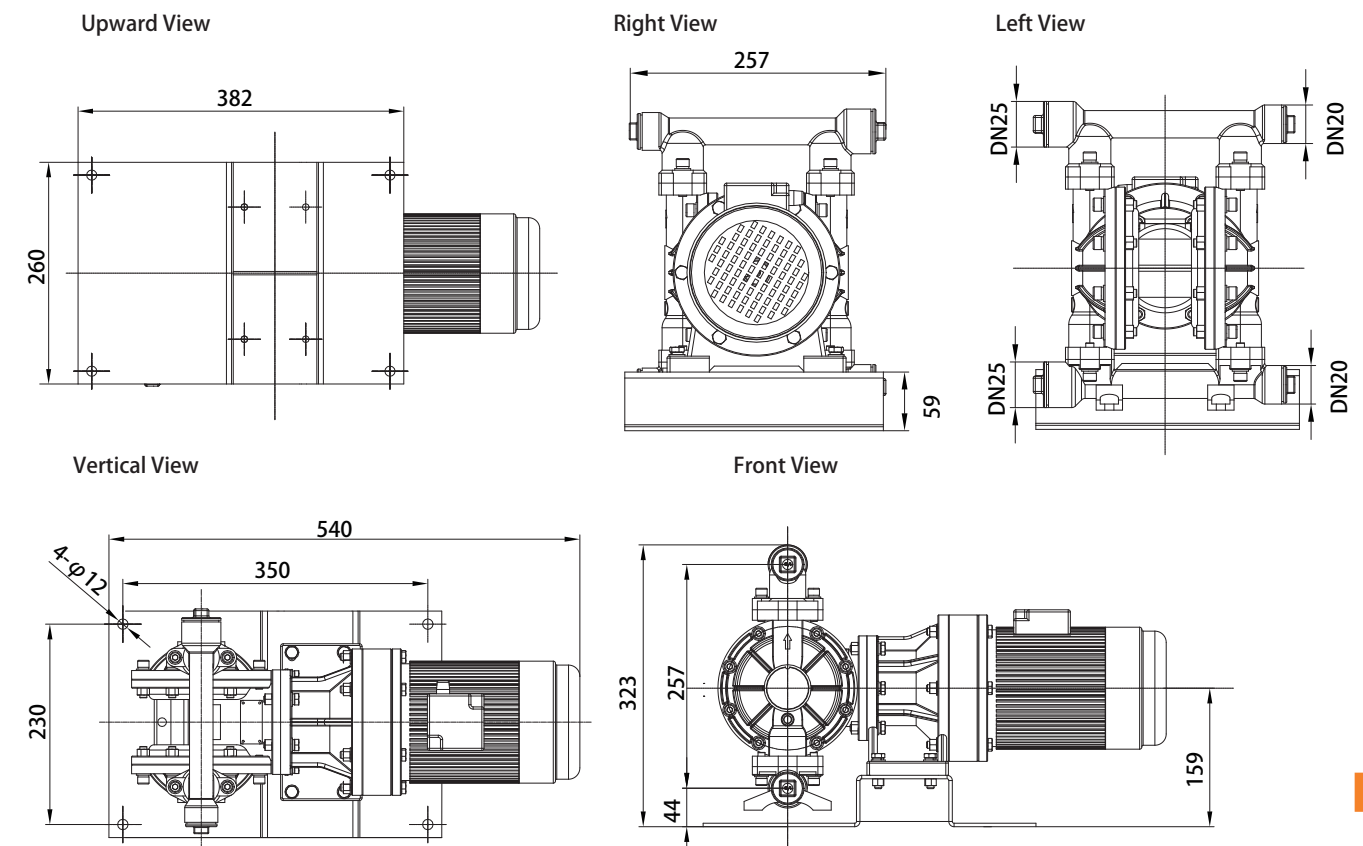
Stainless steel



## Parts List

No.	Name	No.	Name	No.	Name	No.	Name
01	Motor	02	Reducer	03	Base	04	Eccentric Axis
05	Bearing	06	Circlip	07	Plug	08	Outlet Manifold
09	Ball Valve	10	Ball Seat	11	Ball Seat Sealing Ring	12	Inspection Window
13	Stand Column	14	Connecting Rod Axis	15	Axis Sleeve	16	Splint Screw
17	Splint O-ring	18	Outer Splint	19	Teflon Diaphragm	20	Santoprene Diaphragm
21	Inner Splint	22	Inlet Manifold	23	Center Body		

## Installation dimensions



Note: GODO Manufacturing Co.,Ltd reserves the right to change product design without prior notice. Please consult sales for latest product size.





# DBY3-10 DBY3-15 Aluminum alloy

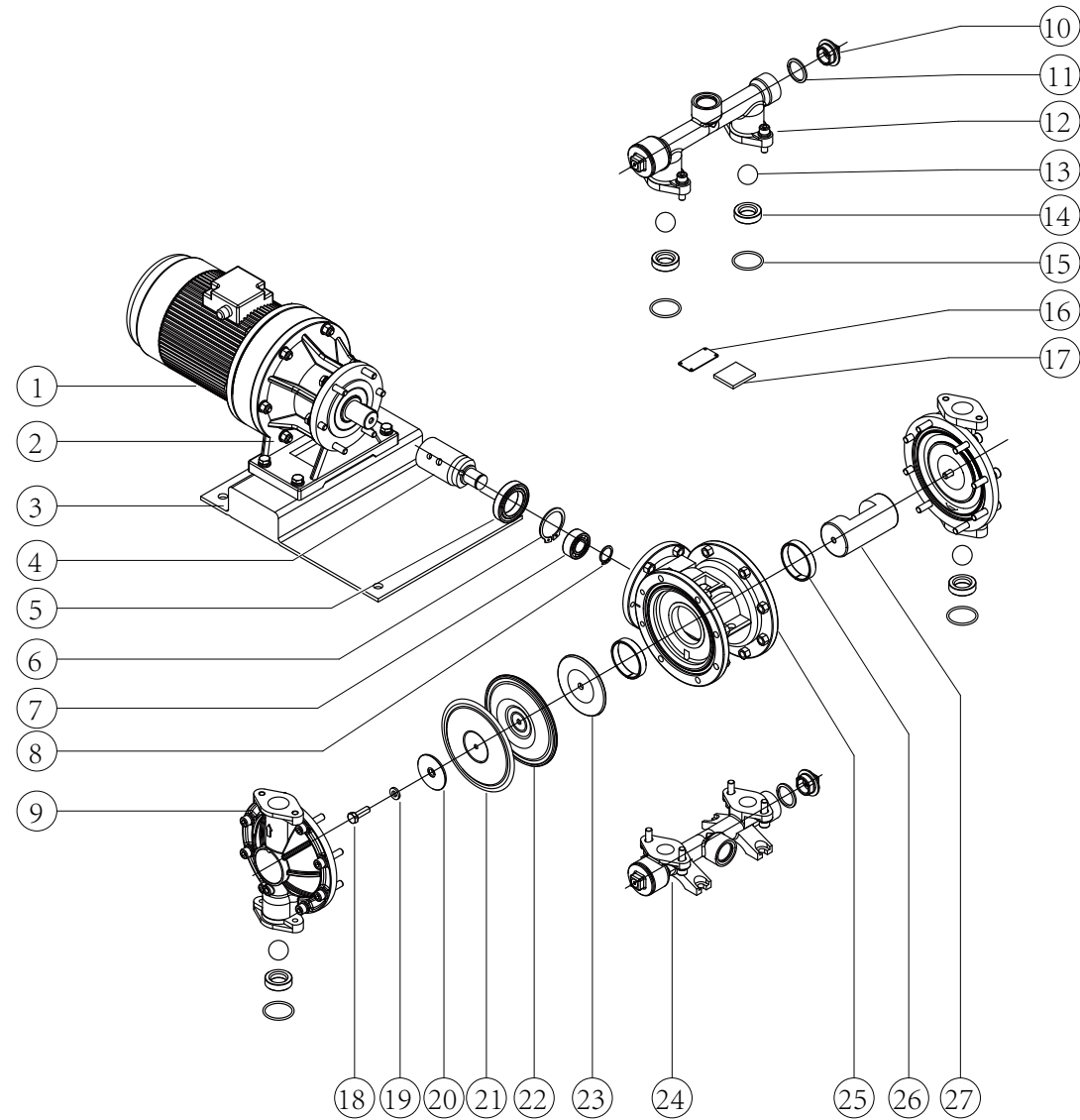
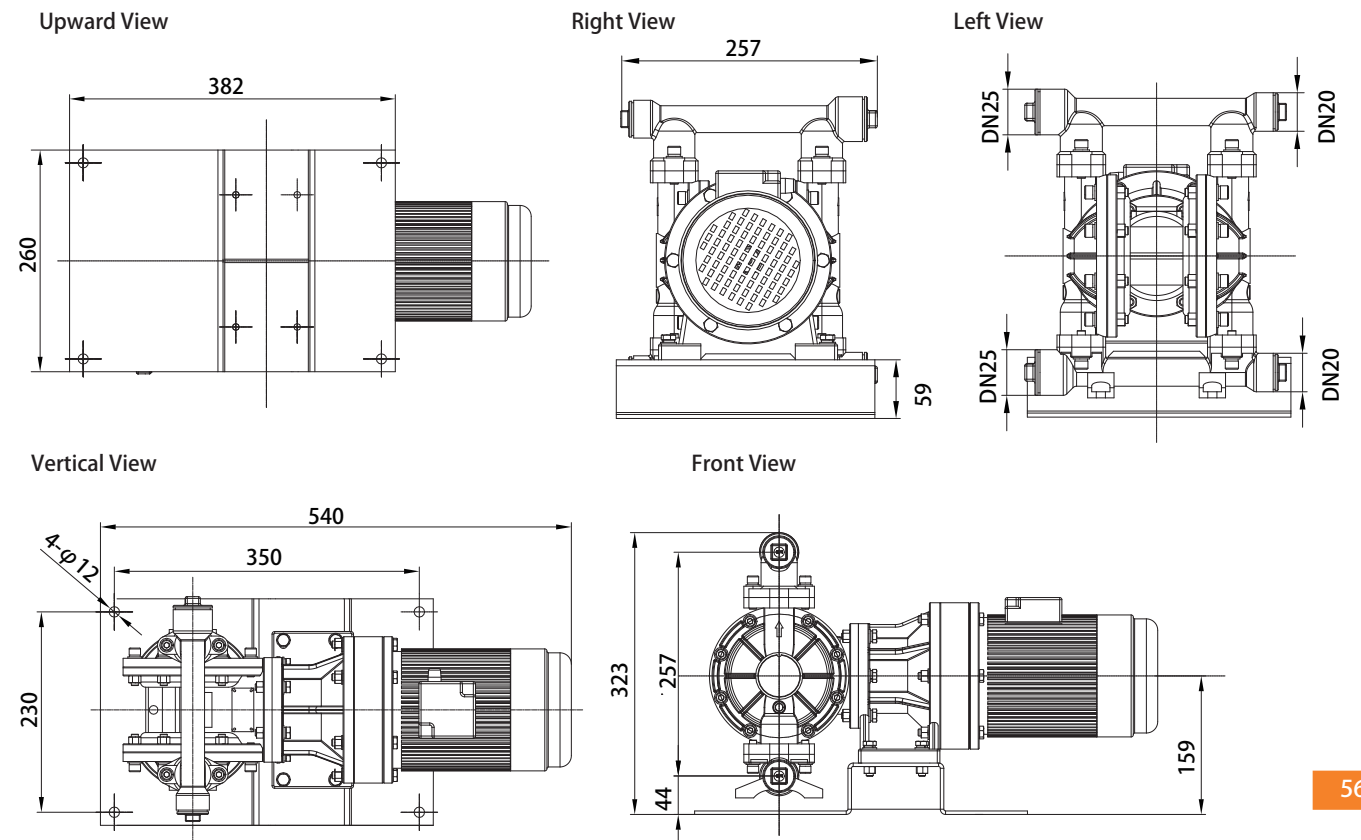
## Specifications

	DBY3-15	DBY3S-15
Max. Flow Rate	12.8 lpm	12.8 lpm
Max. Head	40 m	70 m
Max. Suction Height	3 m	3 m
Max. Working Pressure	4 bar	7 bar
Fluid Inlet/Outlet Size	DN15 (1/2" )	DN15 (1/2" )
Max. Permitted Grain	2.5 mm	2.5 mm
Outlet Pressure	0.4 Mpa	0.7 Mpa
Motor Power	0.55 kw	0.75 kw
Every Reciprocating Flow	0.15 L	0.15 L
Max. Reciprocating Speed	85 cpm	85 cpm
Pump body structure materials: Cast steel Nodular cast iron Aluminum alloy PP Stainless steel PVDF		



Aluminum alloy

## Installation dimensions



## Parts List

No.	Name	No.	Name	No.	Name	No.	Name
01	Motor	02	Reducer	03	Base	04	Eccentric Axis
05	Large Bearing	06	Large Washer	07	Small Bearing	08	Small Washer
09	Stand Column	10	Plug	11	Plug Sealing Ring	12	Outlet Manifold
13	Ball Valve	14	Ball Seat	15	Ball Seat Sealing Ring	16	Nameplate
17	Inspection Window	18	Splint Screw	19	Splint O-ring	20	Outer Splint
21	Teflon Diaphragm	22	Santoprene Diaphragm	23	Inner Splint	24	Inlet Manifold
25	Center Body	26	Connecting Rod Axis Sleeve	27	Connecting Rod Axis		





# DBY3-10 DBY3-15

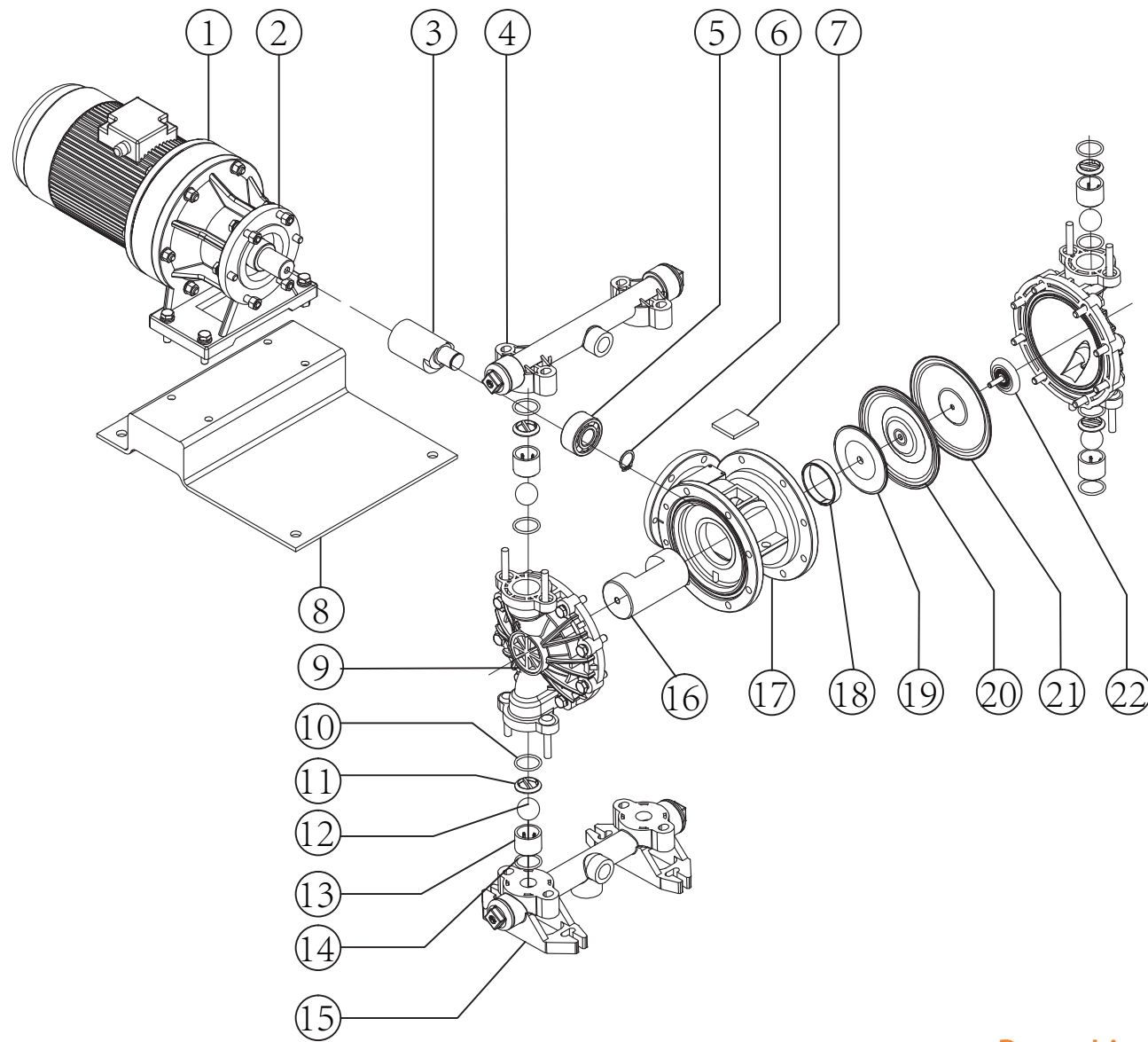
Engineering plastics / Fluorine plastic

## Specifications

	DBY3-15	DBY3S-15
Max. Flow Rate	12.8 lpm	12.8 lpm
Max. Head	40 m	70 m
Max. Suction Height	3 m	3 m
Max. Working Pressure	4 bar	7 bar
Fluid Inlet/Outlet Size	DN15 (1/2" )	DN15 (1/2" )
Max. Permitted Grain	2.5 mm	2.5 mm
Outlet Pressure	0.4 Mpa	0.7 Mpa
Motor Power	0.55 kw	0.75 kw
Every Reciprocating Flow	0.15 L	0.15 L
Max. Reciprocating Speed	85 cpm	85 cpm
Pump body structure materials: Cast steel Nodular cast iron Aluminum alloy PP Stainless steel PVDF		



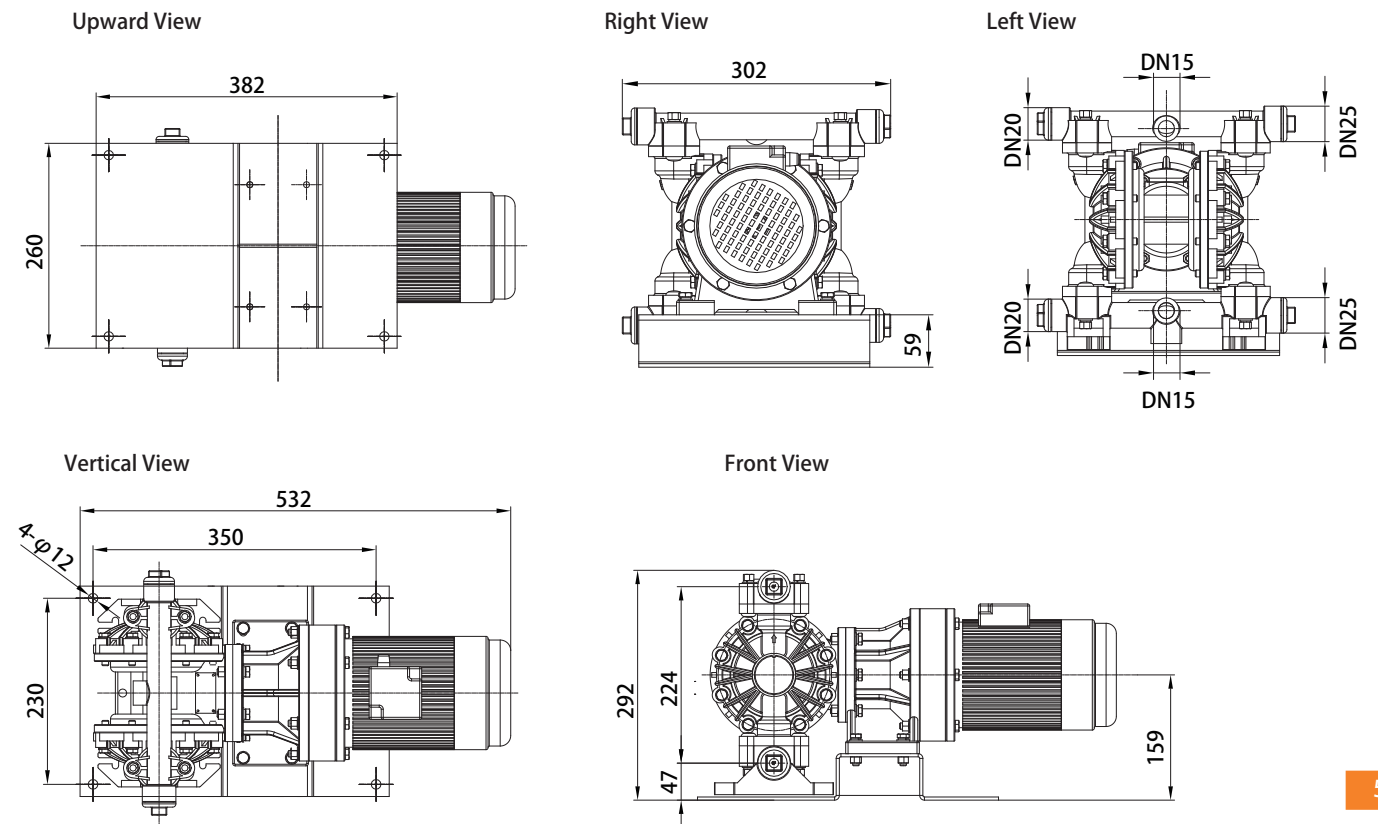
Fluorine plastic



## Parts List

No.	Name	No.	Name	No.	Name	No.	Name
01	Motor	02	Reducer	03	Eccentric Axis	04	Outlet Manifold
05	Bearing	06	Circlip	07	Inspection Window	08	Base
09	Stand Column	10	Ball Seat O-ring	11	Ball Seat Sealing Ring	12	Ball Valve
13	Ball Seat	14	Ball Seat O-ring	15	Inlet Manifold	16	Connecting Rod Axis
17	Center Body	18	Connecting Rod Axis Sleeve	19	Inner Splint	20	Santoprene Diaphragm
21	Teflon Diaphragm	22	Outer Splint				

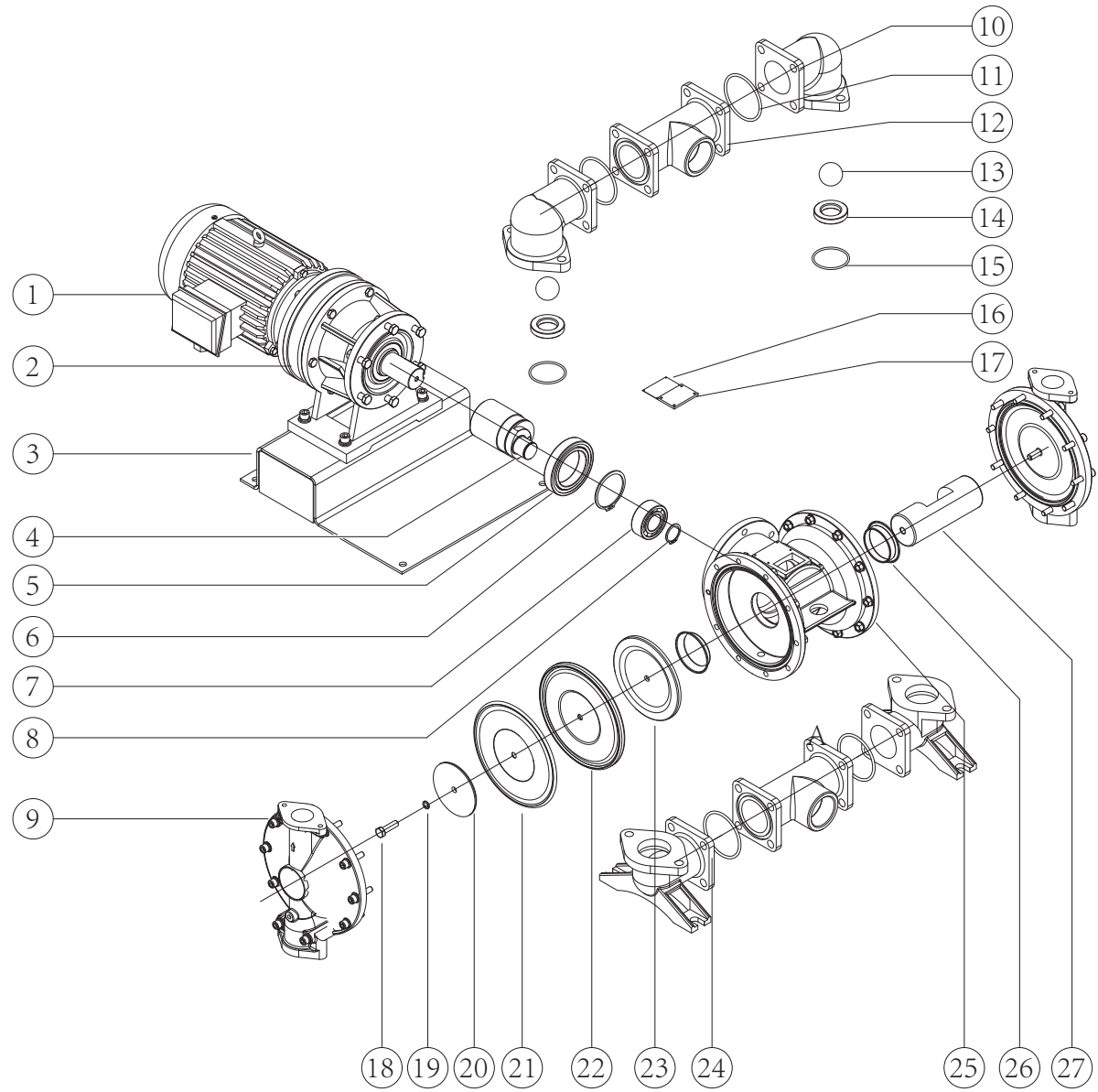
## Installation dimensions







# BFD-25 Aluminum alloy Stainless steel / Cast steel



### Parts List

No.	Name	No.	Name	No.	Name	No.	Name
01	Motor	02	Reducer	03	Base	04	Eccentric Axis
05	Large Bearing	06	Large Washer	07	Small Bearing	08	Small Washer
09	Stand Column	10	Upper Elbow	11	Tee Sealing Ring	12	Tee
13	Ball Valve	14	Ball Seat	15	Ball Seat Sealing Ring	16	Nameplate
17	Inspection Window	18	Splint Screw	19	Splint O-ring	20	Outer Splint
21	Teflon Diaphragm	22	Santoprene Diaphragm	23	Inner Splint	24	Lower Elbow
25	Center Body	26	Connecting Rod Axis Sleeve	27	Connecting Rod Axis		

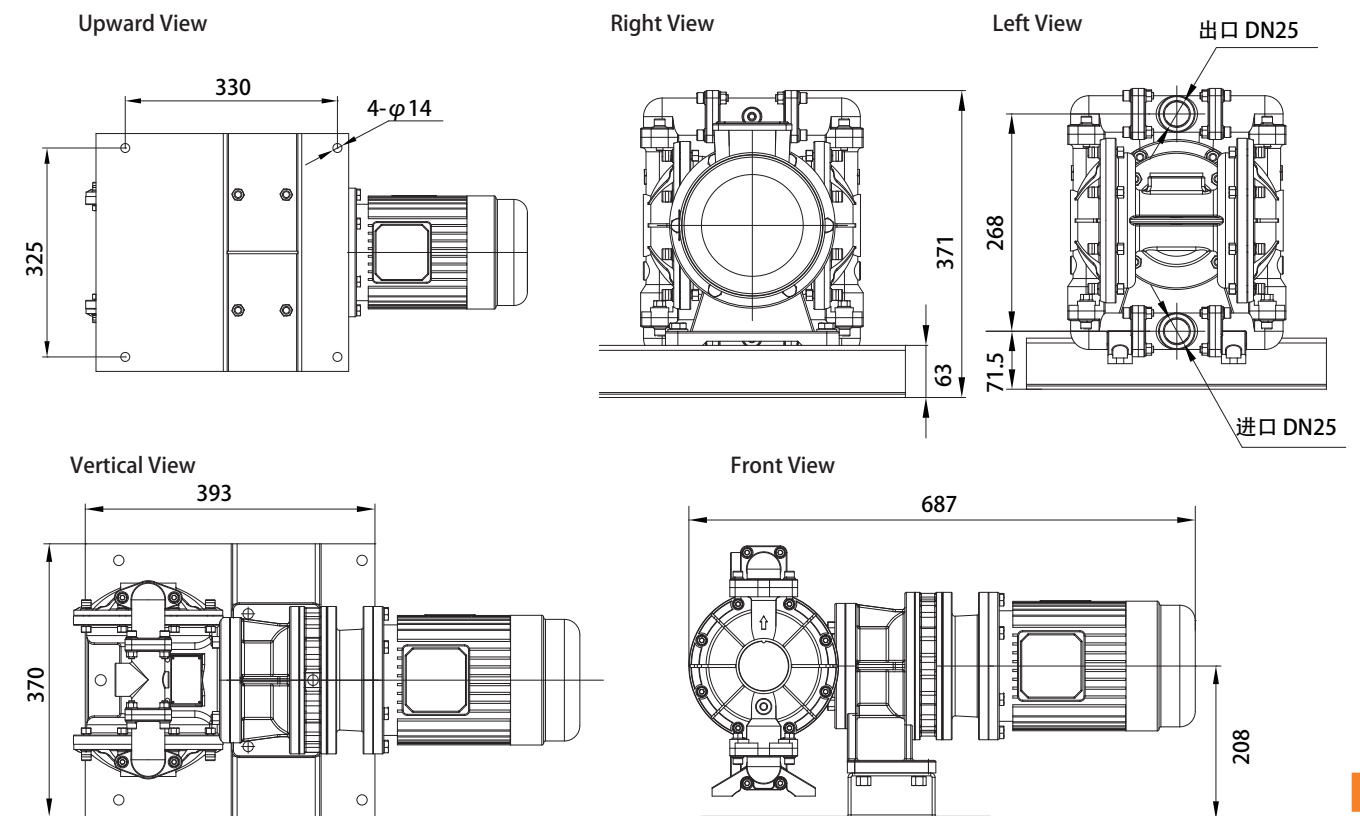


Stainless steel

### Specifications

	BFD-25	BFDS-25
Max. Flow Rate	48 lpm	48 lpm
Max. Head	40 m	70 m
Max. Suction Height	4 m	4 m
Max. Working Pressure	4 bar	7 bar
Fluid Inlet/Outlet Size	DN25 (1" )	DN25 (1" )
Max. Permitted Grain	3.2 mm	3.2 mm
Outlet Pressure	0.4 Mpa	0.7 Mpa
Motor Power	1.5 kw	2.2 kw
Every Reciprocating Flow	0.57 L	0.57 L
Max. Reciprocating Speed	85 cpm	85 cpm
Pump body structure materials: Cast steel Nodular cast iron Aluminum alloy PP Stainless steel PVDF		

### Installation dimensions





# DBY3-32 DBY3-40

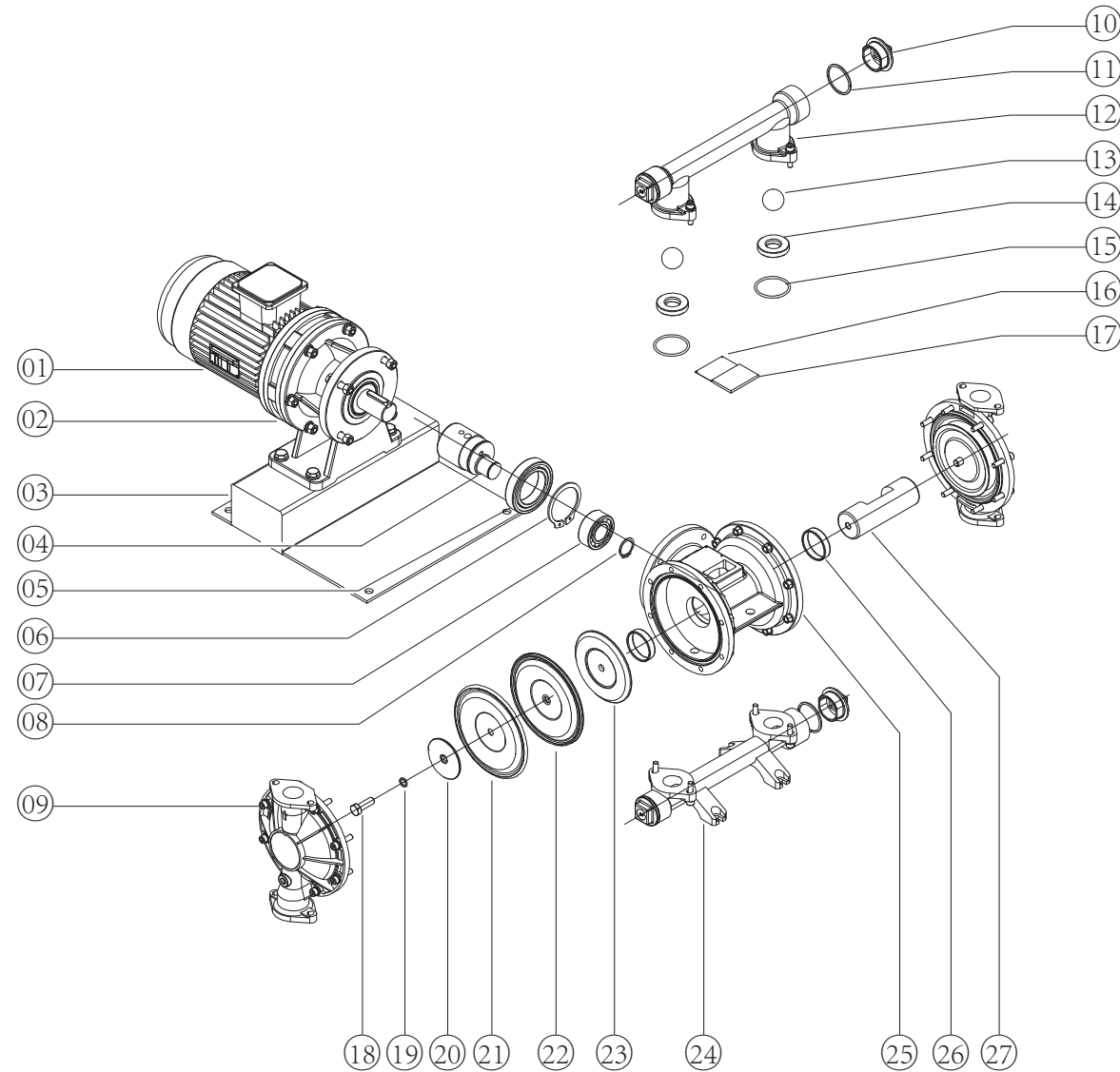
Stainless steel / Nodular cast iron

## Specifications

	DBY3-40	DBY3S-40
Max. Flow Rate	48 lpm	48 lpm
Max. Head	40 m	70 m
Max. Suction Height	4 m	4 m
Max. Working Pressure	4 bar	7 bar
Fluid Inlet/Outlet Size	DN40 (1-1/2" )	DN40 (1-1/2" )
Max. Permitted Grain	3.2 mm	3.2 mm
Outlet Pressure	0.4 Mpa	0.7 Mpa
Motor Power	1.5 kw	2.2 kw
Every Reciprocating Flow	0.57 L	0.57 L
Max. Reciprocating Speed	85 cpm	85 cpm
Pump body structure materials: Cast steel Nodular cast iron Aluminum alloy PP Stainless steel PVDF		



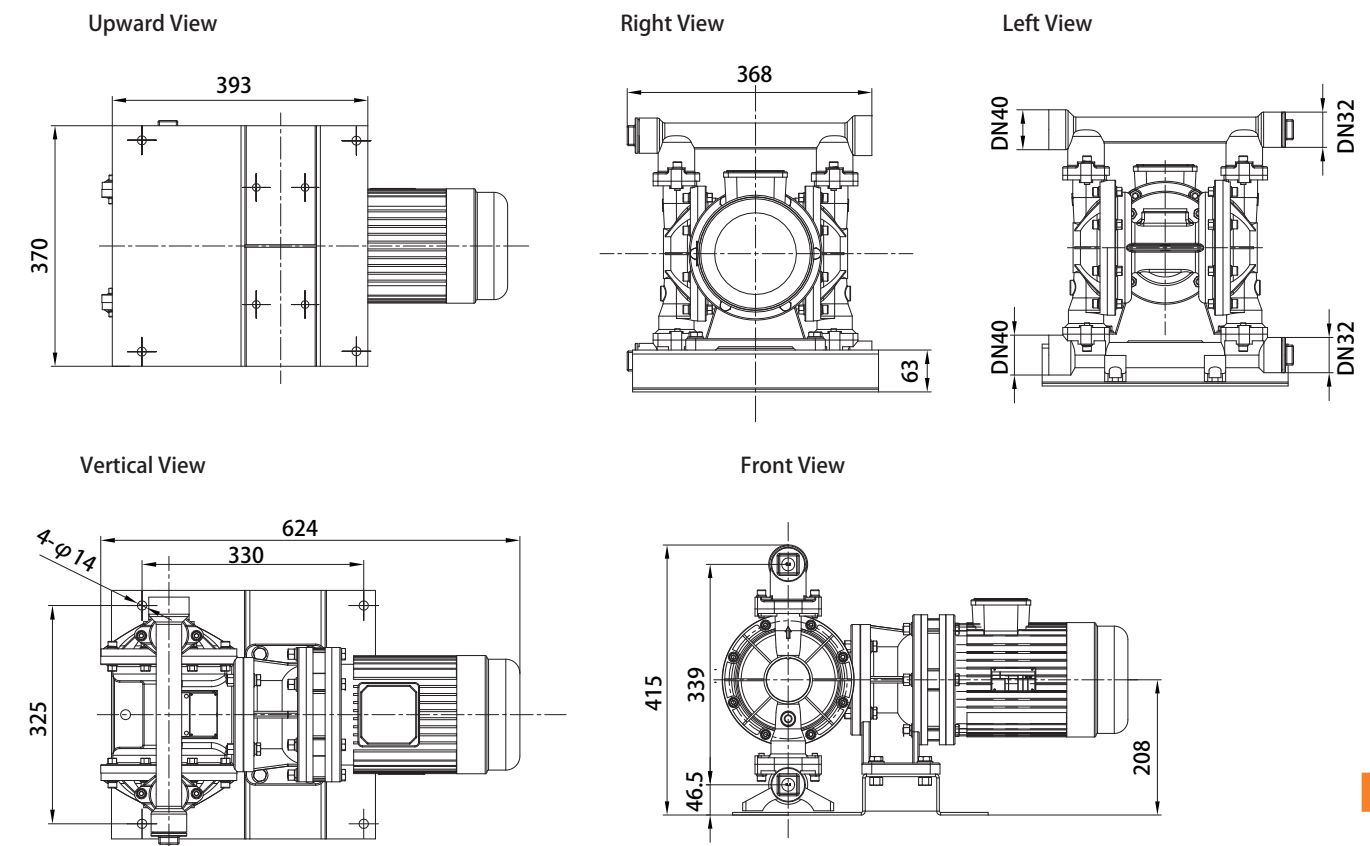
Stainless steel



## Parts List

No.	Name	No.	Name	No.	Name	No.	Name
01	Motor	02	Reducer	03	Base	04	Eccentric Axis
05	Large Bearing	06	Large Washer	07	Small Bearing	08	Small Washer
09	Stand Column	10	Plug	11	Plug Sealing Ring	12	Outlet Manifold
13	Ball Valve	14	Ball Seat	15	Ball Seat Sealing Ring	16	Nameplate
17	Inspection Window	18	Splint Screw	19	Splint O-ring	20	Outer Splint
21	Teflon Diaphragm	22	Santoprene Diaphragm	23	Inner Splint	24	Inlet Manifold
25	Center Body	26	Connecting Rod Axis Sleeve	27	Connecting Rod Axis		

## Installation dimensions







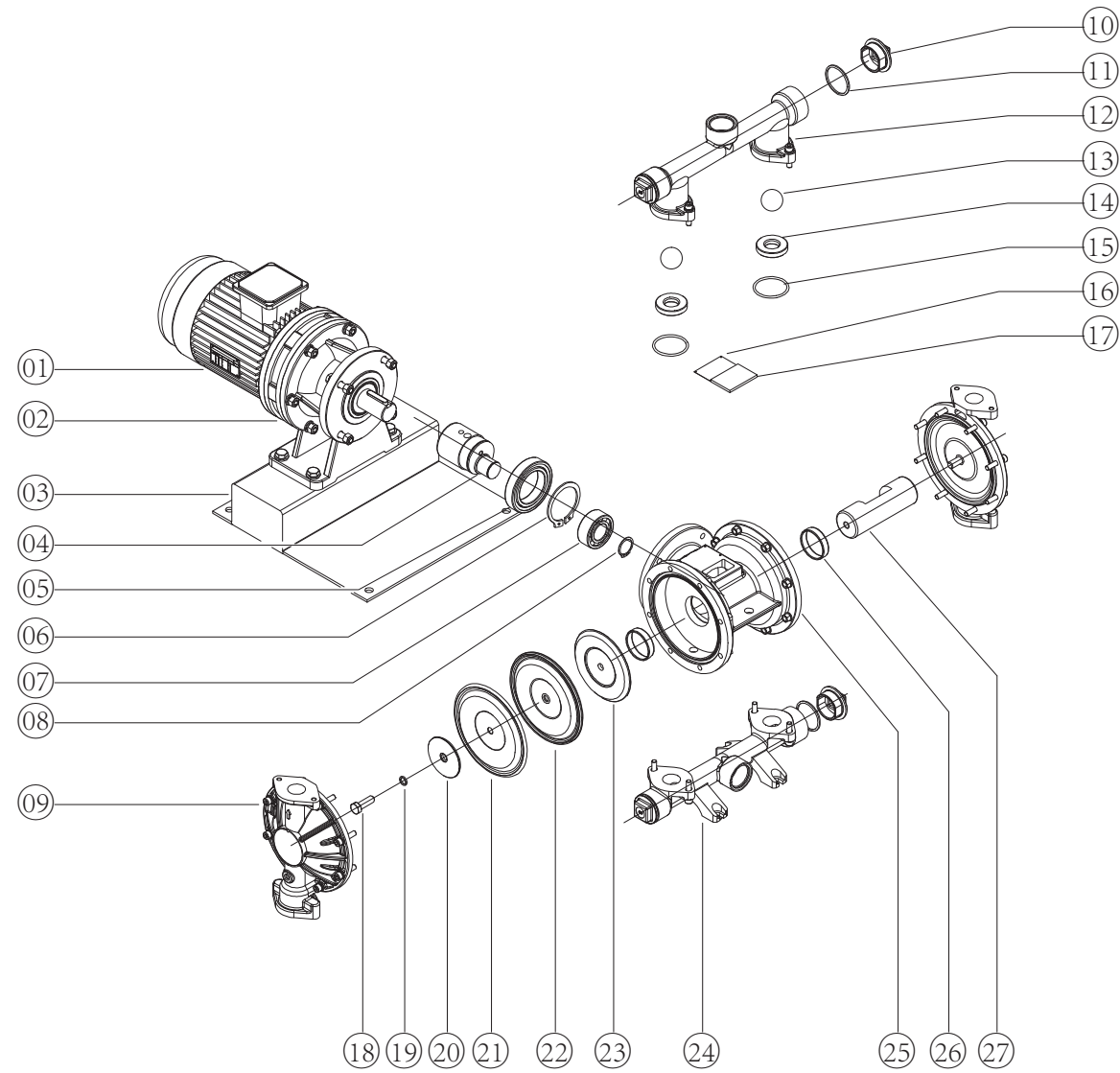
# DBY3-32 DBY3-40 Aluminum alloy

## Specifications

	DBY3-40	DBY3S-40
Max. Flow Rate	48 lpm	48 lpm
Max. Head	40 m	70 m
Max. Suction Height	4 m	4 m
Max. Working Pressure	4 bar	7 bar
Fluid Inlet/Outlet Size	DN40 (1-1/2" )	DN40 (1-1/2" )
Max. Permitted Grain	3.2 mm	3.2 mm
Outlet Pressure	0.4 Mpa	0.7 Mpa
Motor Power	1.5 kw	2.2 kw
Every Reciprocating Flow	0.57 L	0.57 L
Max. Reciprocating Speed	85 cpm	85 cpm
Pump body structure materials: Cast steel Nodular cast iron Aluminum alloy PP Stainless steel PVDF		



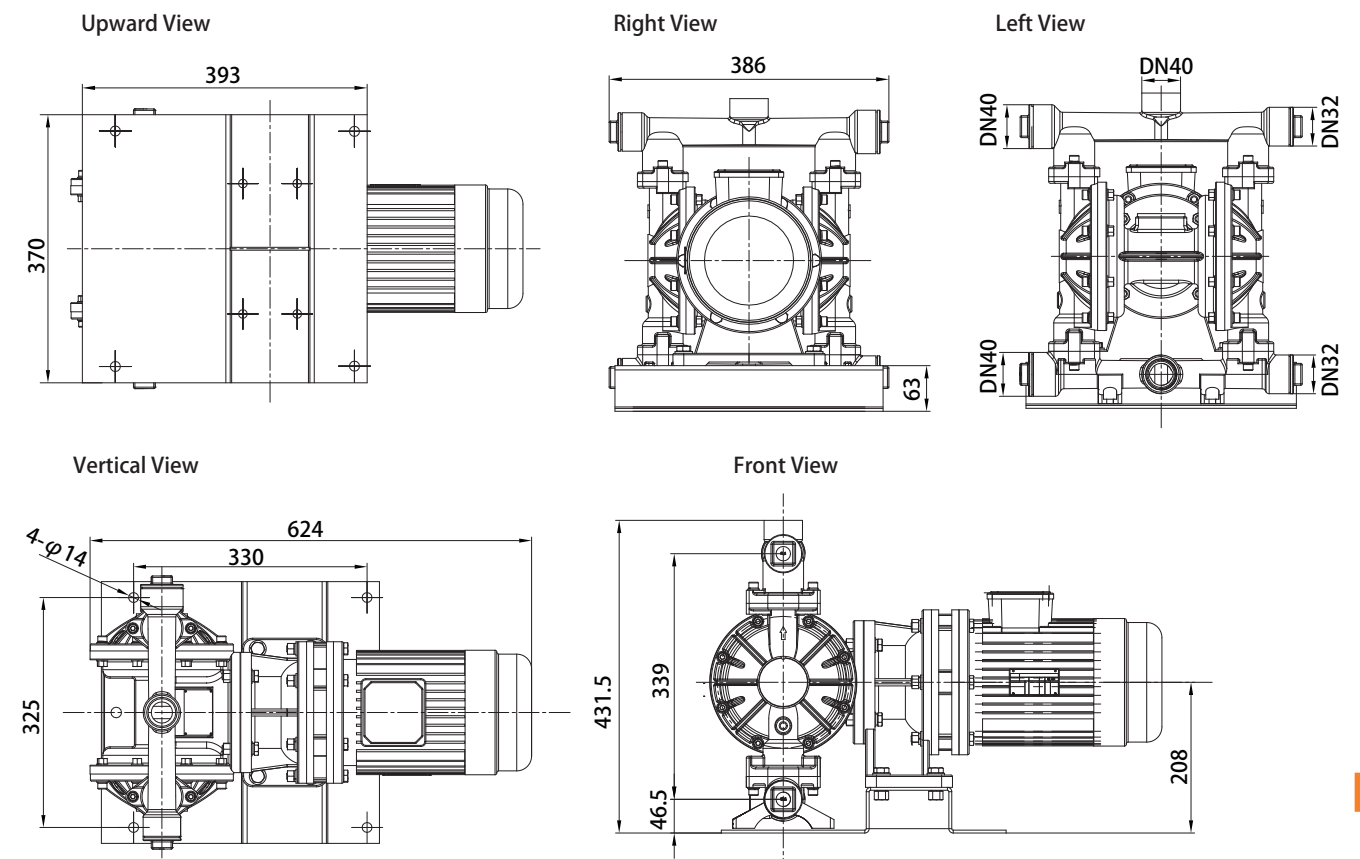
Aluminum alloy



## Parts List

No.	Name	No.	Name	No.	Name	No.	Name
01	Motor	02	Reducer	03	Base	04	Eccentric Axis
05	Large Bearing	06	Large Washer	07	Small Bearing	08	Small Washer
09	Stand Column	10	Plug	11	Plug Sealing Ring	12	Outlet Manifold
13	Ball Valve	14	Ball Seat	15	Ball Seat Sealing Ring	16	Nameplate
17	Inspection Window	18	Splint Screw	19	Splint O-ring	20	Outer Splint
21	Teflon Diaphragm	22	Santoprene Diaphragm	23	Inner Splint	24	Inlet Manifold
25	Center Body	26	Connecting Rod Axis Sleeve	27	Connecting Rod Axis		

## Installation dimensions



Note: GODO Manufacturing Co.,Ltd reserves the right to change product design without prior notice. Please consult sales for latest product size.

# DBY3-32 DBY3-40

Engineering plastics / Fluorine plastic

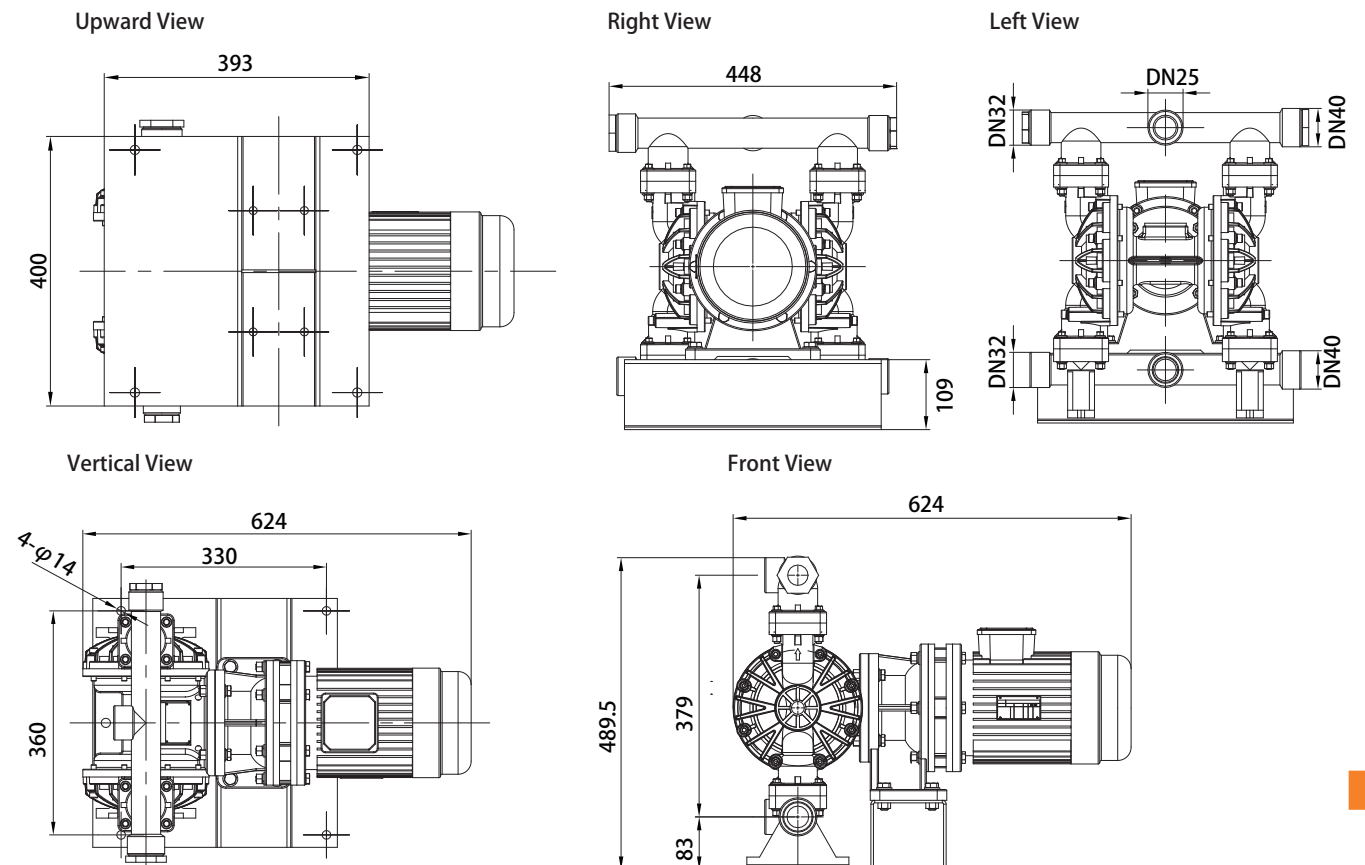
## Specifications

	DBY3-40	DBY3S-40
Max. Flow Rate	48 lpm	48 lpm
Max. Head	40 m	70 m
Max. Suction Height	4 m	4 m
Max. Working Pressure	4 bar	7 bar
Fluid Inlet/Outlet Size	DN40 (1-1/2" )	DN40 (1-1/2" )
Max. Permitted Grain	3.2 mm	3.2 mm
Outlet Pressure	0.4 Mpa	0.7 Mpa
Motor Power	1.5 kw	2.2 kw
Every Reciprocating Flow	0.57 L	0.57 L
Max. Reciprocating Speed	85 cpm	85 cpm
Pump body structure materials: Cast steel Nodular cast iron Aluminum alloy PP Stainless steel PVDF		

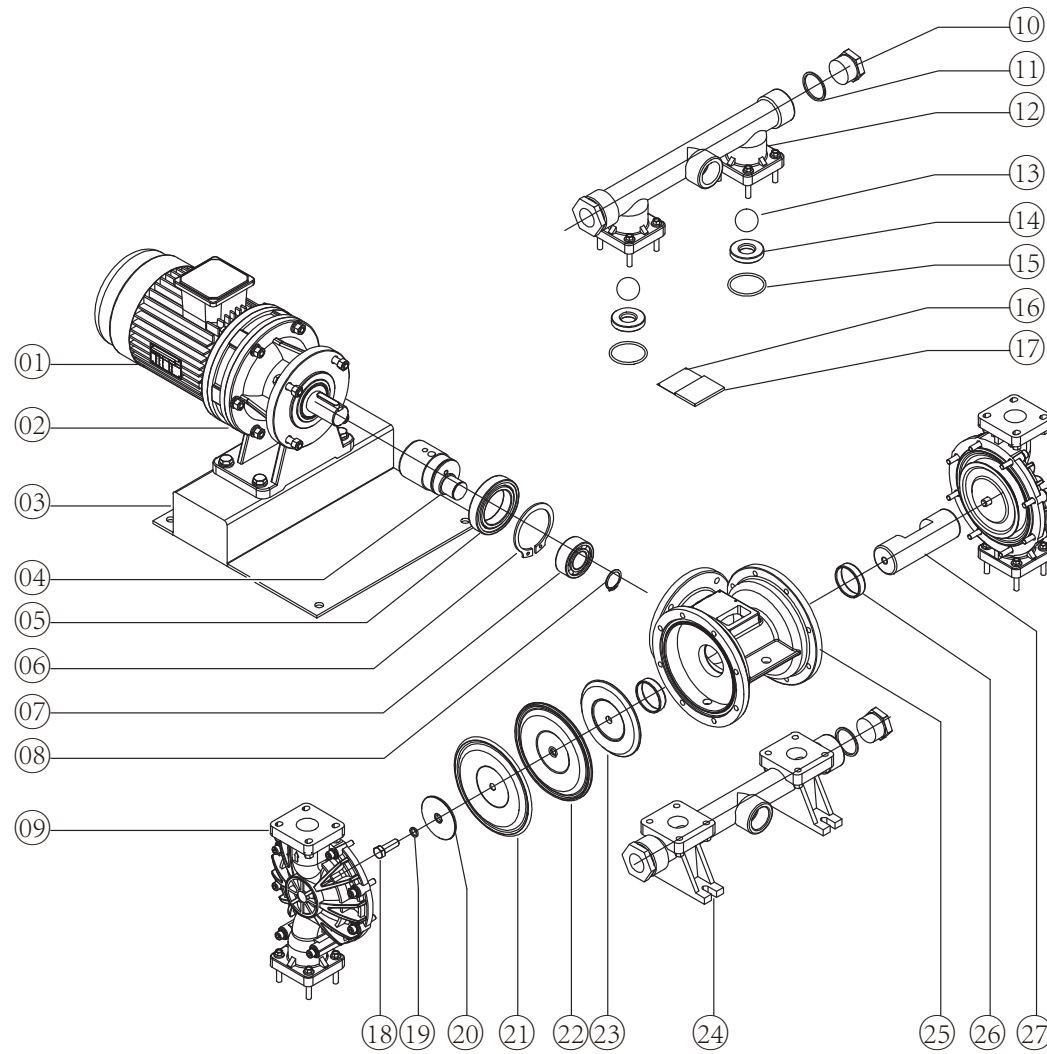


Engineering plastics

## Installation dimensions



Note: GODO Manufacturing Co.,Ltd reserves the right to change product design without prior notice. Please consult sales for latest product size.



## Parts List

No.	Name	No.	Name	No.	Name	No.	Name
01	Motor	02	Reducer	03	Base	04	Eccentric Axis
05	Large Bearing	06	Large Washer	07	Small Bearing	08	Small Washer
09	Stand Column	10	Plug	11	Plug Sealing Ring	12	Outlet Manifold
13	Ball Valve	14	Ball Seat	15	Ball Seat Sealing Ring	16	Nameplate
17	Inspection Window	18	Splint Screw	19	Splint O-ring	20	Outer Splint
21	Teflon Diaphragm	22	Santoprene Diaphragm	23	Inner Splint	24	Inlet Manifold
25	Center Body	26	Connecting Rod Axis Sleeve	27	Connecting Rod Axis		





# BFD-40

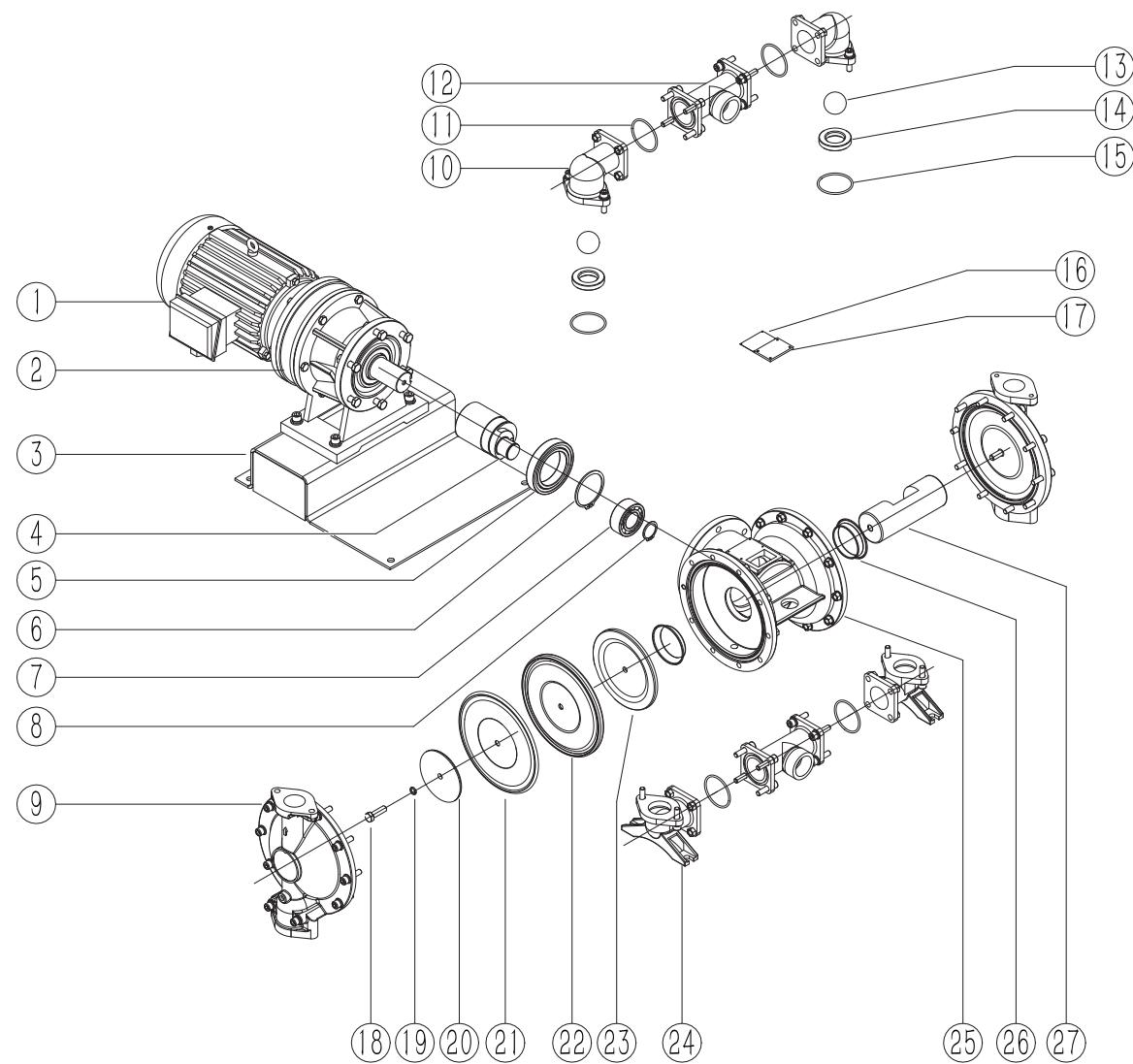
Aluminum alloy / Stainless steel  
Nodular cast iron / Engineering plastics  
Fluorine plastic

## Specifications

	BFD-40	BFDS-40
Max. Flow Rate	162 lpm	162 lpm
Max. Head	40 m	40 m
Max. Suction Height	5 m	5 m
Max. Working Pressure	4 bar	4 bar
Fluid Inlet/Outlet Size	DN40 (1-1/2" )	DN40 (1-1/2" )
Max. Permitted Grain	4.8 mm	4.8 mm
Outlet Pressure	0.4 Mpa	0.7 Mpa
Motor Power	2.2 kw	3 kw
Every Reciprocating Flow	1.9 L	1.9 L
Max. Reciprocating Speed	85 cpm	85 cpm
Pump body structure materials: Cast steel Nodular cast iron Aluminum alloy PP Stainless steel PVDF		



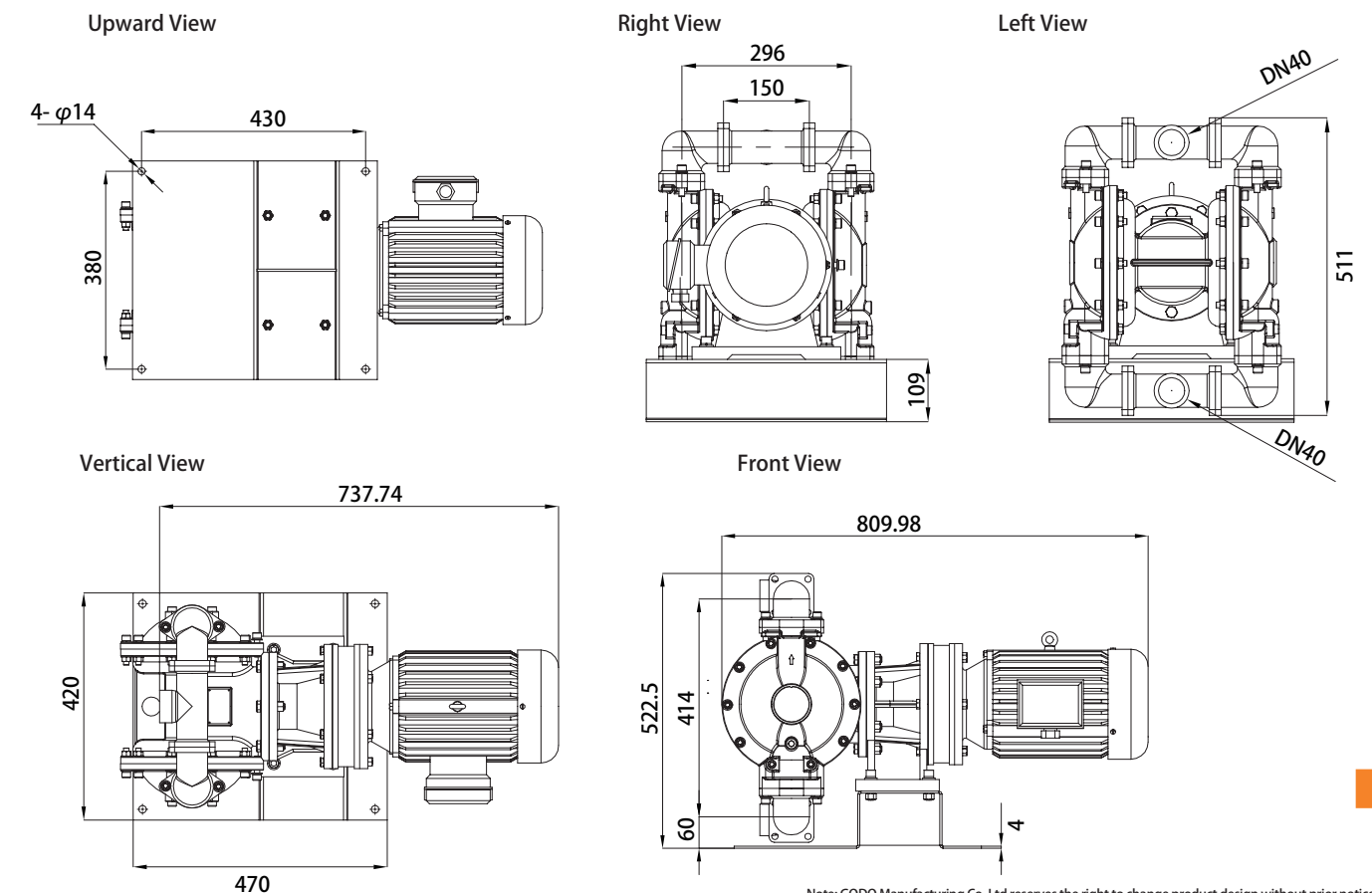
Stainless steel



### Parts List

No.	Name	No.	Name	No.	Name	No.	Name
01	Motor	02	Reducer	03	Base	04	Eccentric Axis
05	Large Bearing	06	Large Washer	07	Small Bearing	08	Small Washer
09	Stand Column	10	Upper Elbow	11	Tee Sealing Ring	12	Tee
13	Ball Valve	14	Ball Seat	15	Ball Seat Sealing Ring	16	Nameplate
17	Inspection Window	18	Splint Screw	19	Splint O-ring	20	Outer Splint
21	Teflon Diaphragm	22	Santoprene Diaphragm	23	Inner Splint	24	Lower Elbow
25	Center Body	26	Connecting Rod Axis Sleeve	27	Connecting Rod Axis		

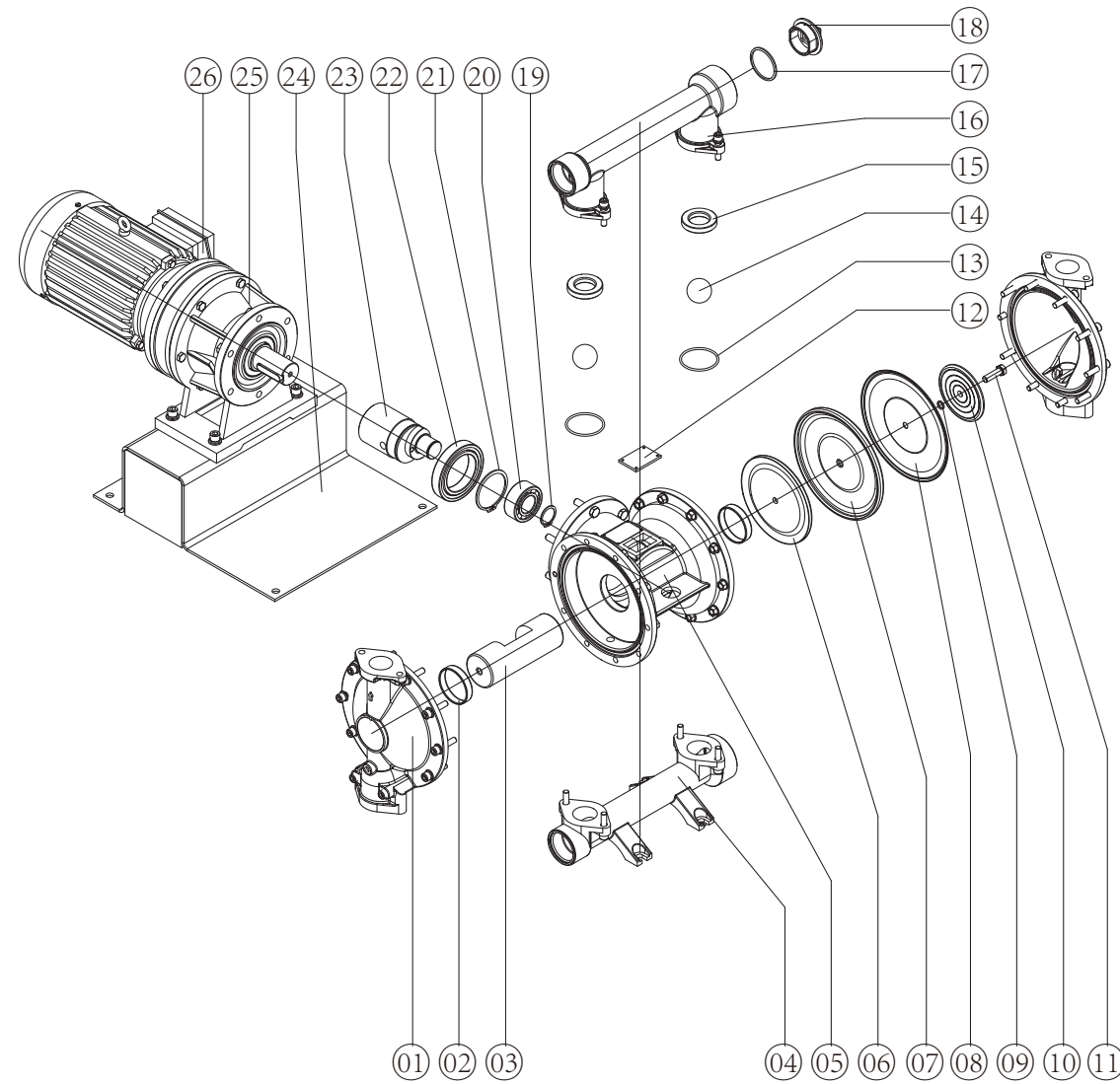
## Installation dimensions



Note: GODO Manufacturing Co.,Ltd reserves the right to change product design without prior notice. Please consult sales for latest product size.



# DBY3-50 DBY3-65 Stainless steel / Nodular cast iron



## Specifications

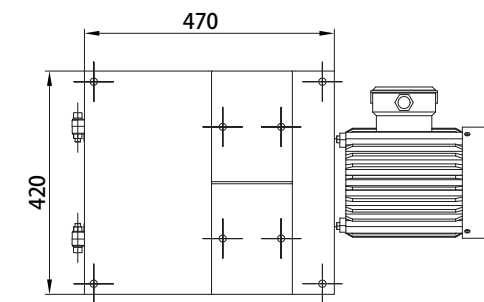
	DBY3-50	DBY3S-50
Max. Flow Rate	162 lpm	162 lpm
Max. Head	40 m	70 m
Max. Suction Height	5 m	5 m
Max. Working Pressure	4bar	7 bar
Fluid Inlet/Outlet Size	DN50 (2" )	DN50 (2" )
Max. Permitted Grain	4.8 mm	4.8 mm
Outlet Pressure	0.4 Mpa	0.7 Mpa
Motor Power	2.2 kw	3 kw
Every Reciprocating Flow	1.9 L	1.9 L
Max. Reciprocating Speed	85 cpm	85 cpm
Pump body structure materials: Cast steel Nodular cast iron Aluminum alloy PP Stainless steel PVDF		



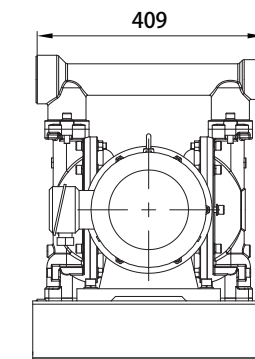
Stainless steel

## Installation dimensions

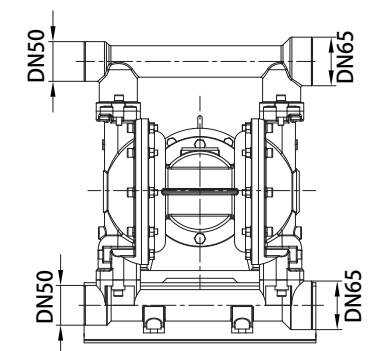
Upward View



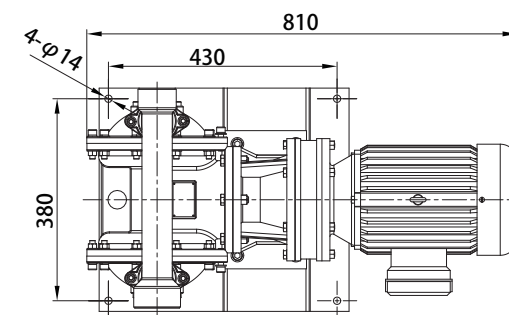
Right View



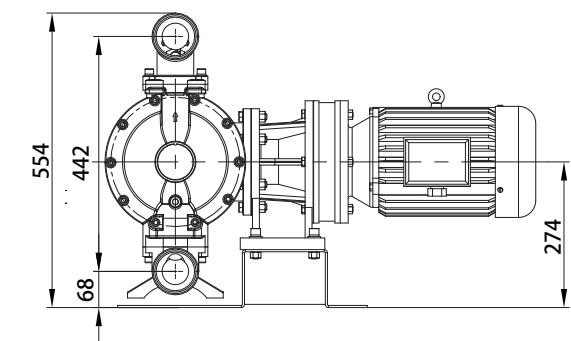
Left View



Vertical View



Front View



## Parts List

No.	Name	No.	Name	No.	Name	No.	Name
01	Stand Column	02	Connecting Rod Axis Sleeve	03	Connecting Rod Axis	04	Inlet Manifold
05	Center Body	06	Inner Splint	07	Santoprene Diaphragm	08	Teflon Diaphragm
09	Splint O-ring	10	Outer Splint	11	Splint Screw	12	Inspection Window
13	Ball Seat Sealing Ring	14	Ball Valve	15	Ball Seat	16	Outlet Manifold
17	Plug Sealing Ring	18	Plug	19	Small Washer	20	Small Bearing
21	Large Washer	22	Large Bearing	23	Eccentric Axis	24	Base
25	Reducer	26	Motor				





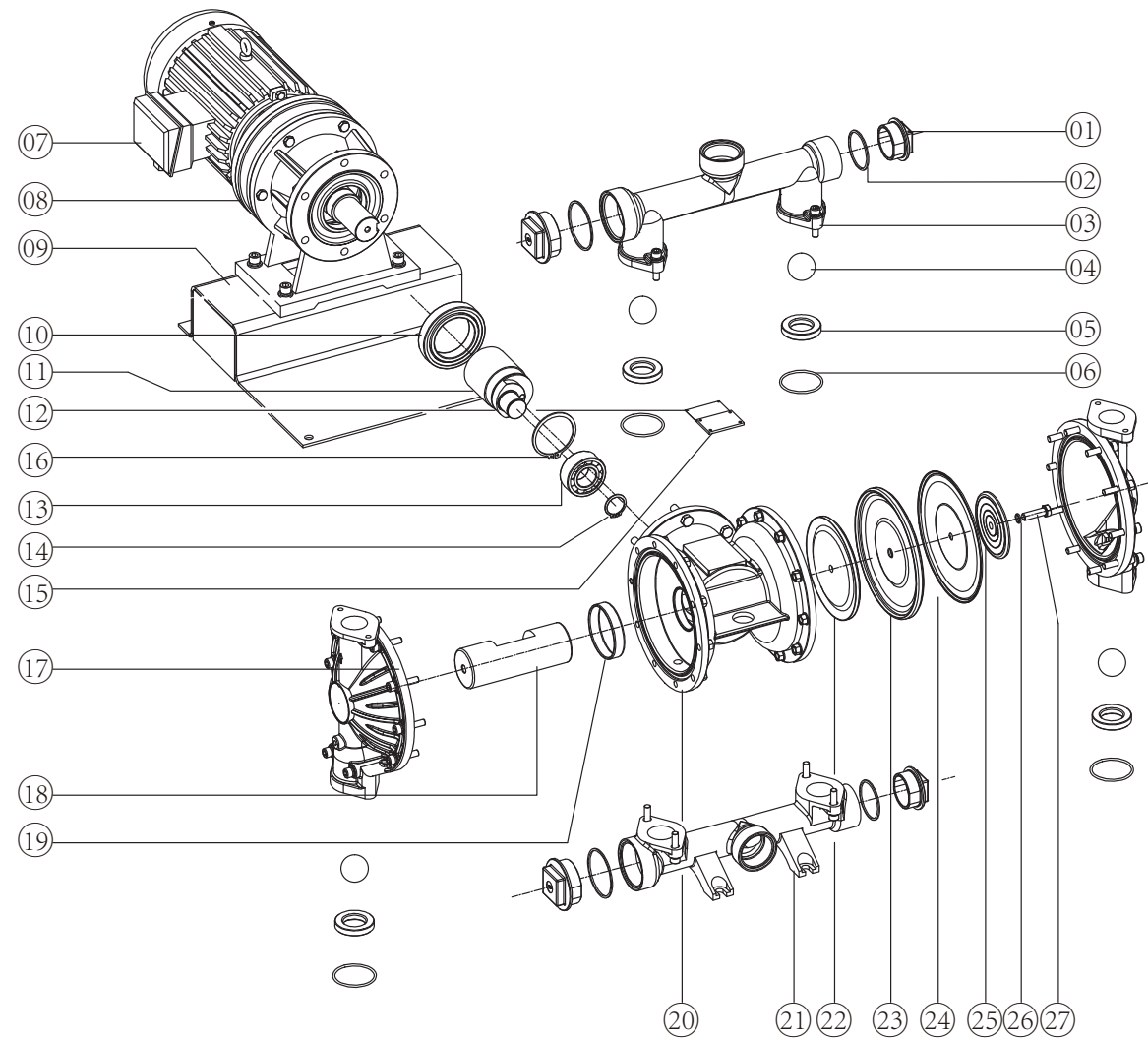
# DBY3-50 DBY3-65 Aluminum alloy

## Specifications

	DBY3-50	DBY3S-50
Max. Flow Rate	162 lpm	162 lpm
Max. Head	40 m	70 m
Max. Suction Height	5 m	5 m
Max. Working Pressure	4bar	7 bar
Fluid Inlet/Outlet Size	DN50 (2" )	DN50 (2" )
Max. Permitted Grain	4.8 mm	4.8 mm
Outlet Pressure	0.4 Mpa	0.7 Mpa
Motor Power	2.2 kw	3 kw
Every Reciprocating Flow	1.9 L	1.9 L
Max. Reciprocating Speed	85 cpm	85 cpm
Pump body structure materials: Cast steel Nodular cast iron Aluminum alloy PP Stainless steel PVDF		



Aluminum alloy

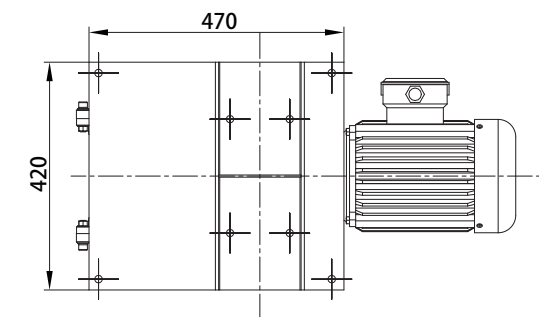


## Parts List

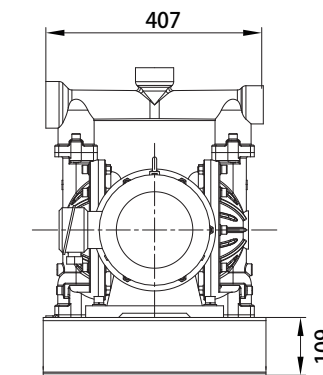
No.	Name	No.	Name	No.	Name	No.	Name
01	Plug	02	Plug Sealing Ring	03	Outlet Manifold	04	Ball Valve
05	Ball Seat	06	Ball Seat Sealing Ring	07	Motor	08	Reducer
09	Base	10	Large Bearing	11	Eccentric Axis	12	Nameplate
13	Large Washer	14	Small Bearing	15	Small Washer	16	Inspection Window
17	Stand Column	18	Connecting Rod Axis	19	Connecting Rod Axis Sleeve	20	Center Body
21	Inlet Manifold	22	Inner Splint	23	Santoprene Diaphragm	24	Teflon Diaphragm
25	Outer Splint	26	Splint O-ring	27	Splint Screw		

## Installation dimensions

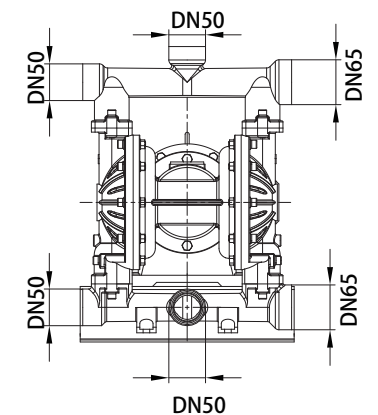
Upward View



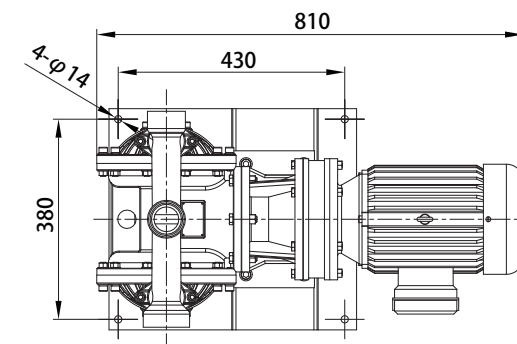
Right View



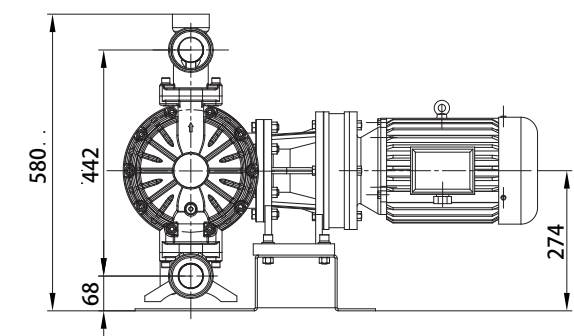
Left View



Vertical View



Front View



Note: GODO Manufacturing Co.,Ltd reserves the right to change product design without prior notice. Please consult sales for latest product size.



# DBY3-50 DBY3-65

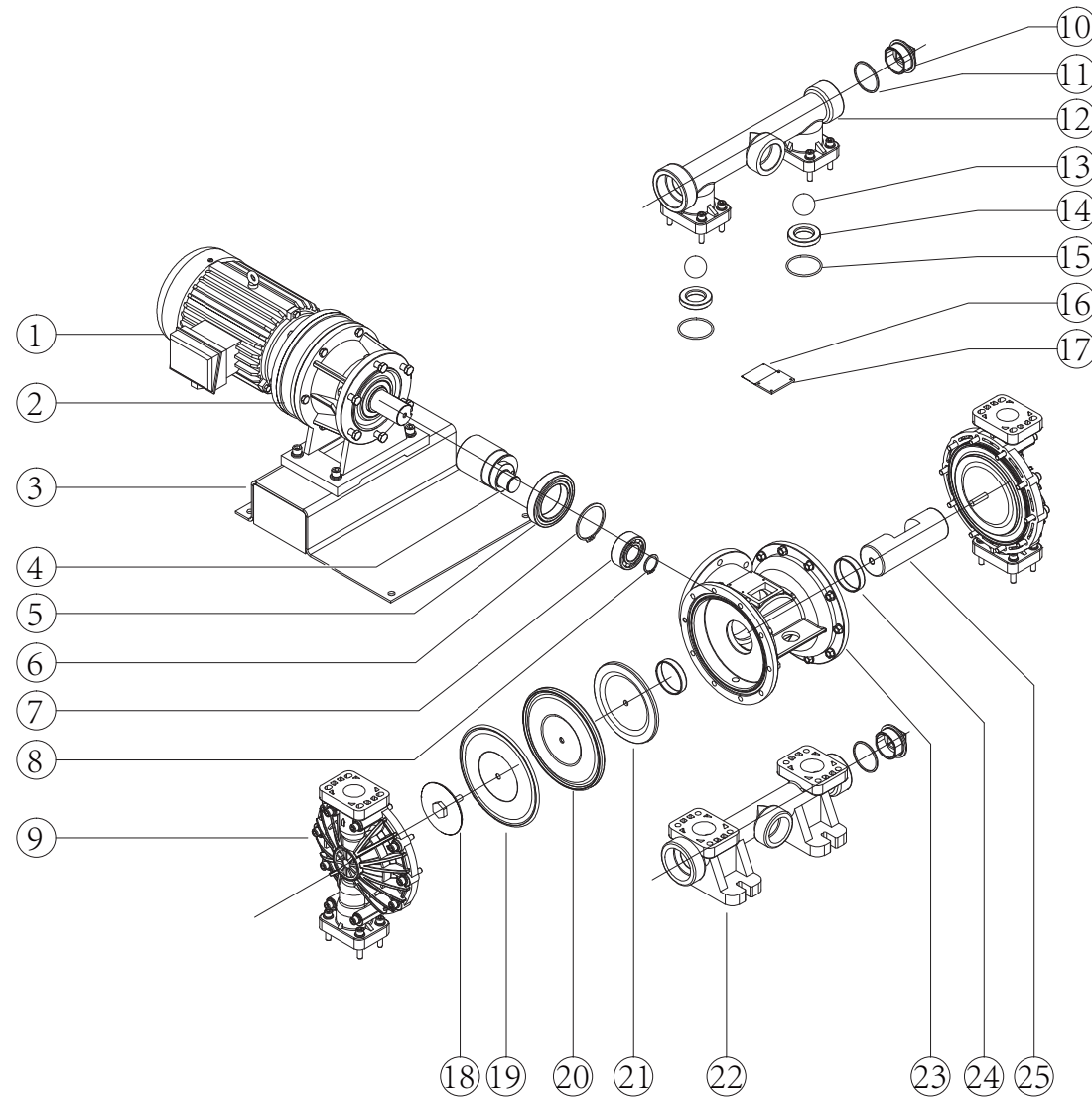
Engineering plastics / Fluorine plastic

## Specifications

	DBY3-50	DBY3S-50
Max. Flow Rate	162 lpm	162 lpm
Max. Head	40 m	70 m
Max. Suction Height	5 m	5 m
Max. Working Pressure	4bar	7 bar
Fluid Inlet/Outlet Size	DN50 (2" )	DN50 (2" )
Max. Permitted Grain	4.8 mm	4.8 mm
Outlet Pressure	0.4 Mpa	0.7 Mpa
Motor Power	2.2 kw	3 kw
Every Reciprocating Flow	1.9 L	1.9 L
Max. Reciprocating Speed	85 cpm	85 cpm
Pump body structure materials: Cast steel Nodular cast iron Aluminum alloy PP Stainless steel PVDF		



Fluorine plastic

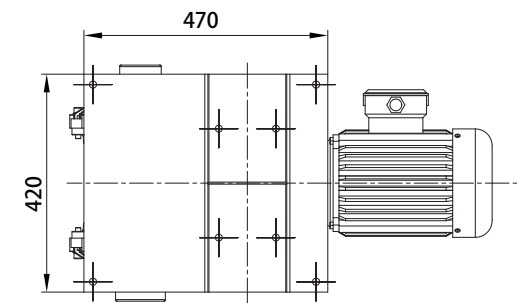


## Parts List

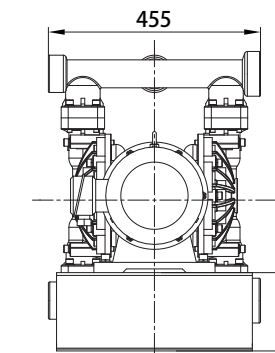
No.	Name	No.	Name	No.	Name	No.	Name
01	Motor	02	Reducer	03	Base	04	Eccentric Axis
05	Large Bearing	06	Large Washer	07	Small Bearing	08	Small Washer
09	Stand Column	10	Plug	11	Plug Sealing Ring	12	Outlet Manifold
13	Ball Valve	14	Ball Seat	15	Ball Seat Sealing Ring	16	Nameplate
17	Inspection Window	18	Outer Splint	19	Teflon Diaphragm	20	Santoprene Diaphragm
21	Inner Splint	22	Inlet Manifold	23	Center Body	24	Connecting Rod Axis Sleeve
25	Connecting Rod Axis						

## Installation dimensions

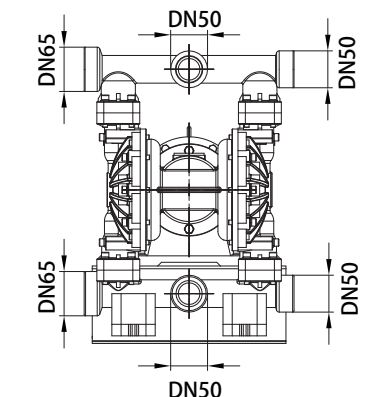
Upward View



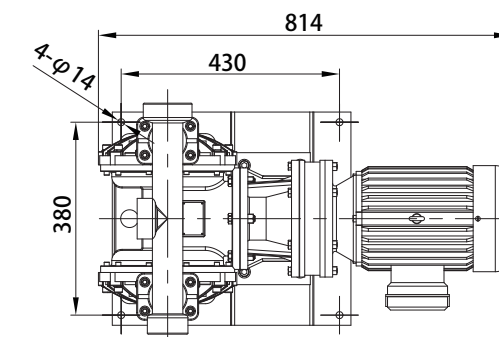
Right View



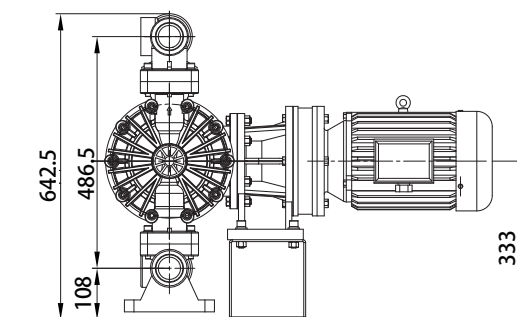
Left View



Vertical View



Front View







# BFD-50

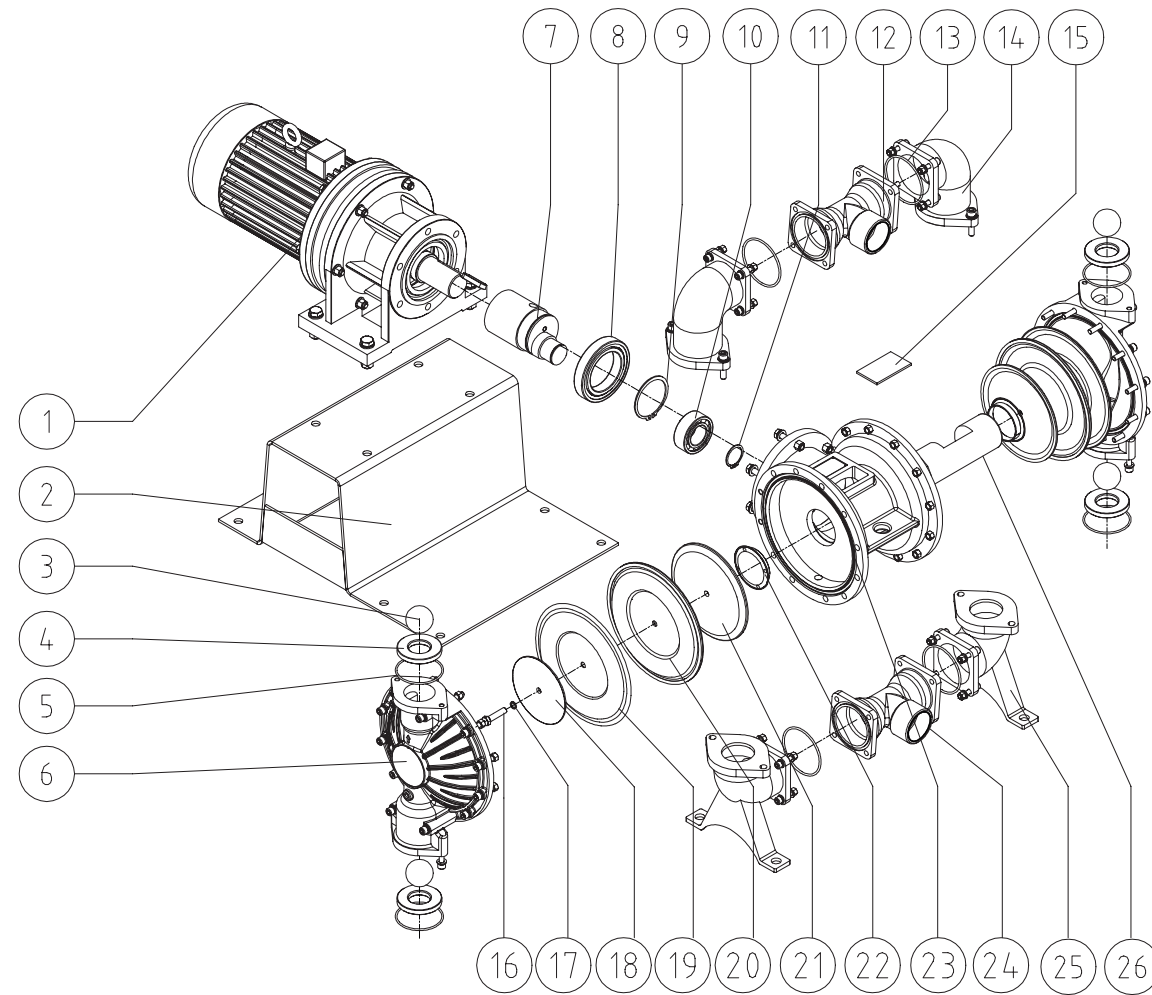
Aluminum alloy / Stainless steel  
Nodular cast iron / Engineering plastics  
Fluorine plastic

## Specifications

	BFD-50	BFDS-50
Max. Flow Rate	245 lpm	245 lpm
Max. Head	40 m	70 m
Max. Suction Height	5 m	5 m
Max. Working Pressure	4bar	7 bar
Fluid Inlet/Outlet Size	DN50 (2" )	DN50 (2" )
Max. Permitted Grain	6.4 mm	6.4 mm
Outlet Pressure	0.4 Mpa	0.7 Mpa
Motor Power	3 kw	4 kw
Every Reciprocating Flow	3.9 L	3.9 L
Max. Reciprocating Speed	63 cpm	63 cpm
Pump body structure materials: Cast steel Nodular cast iron Aluminum alloy PP Stainless steel PVDF		



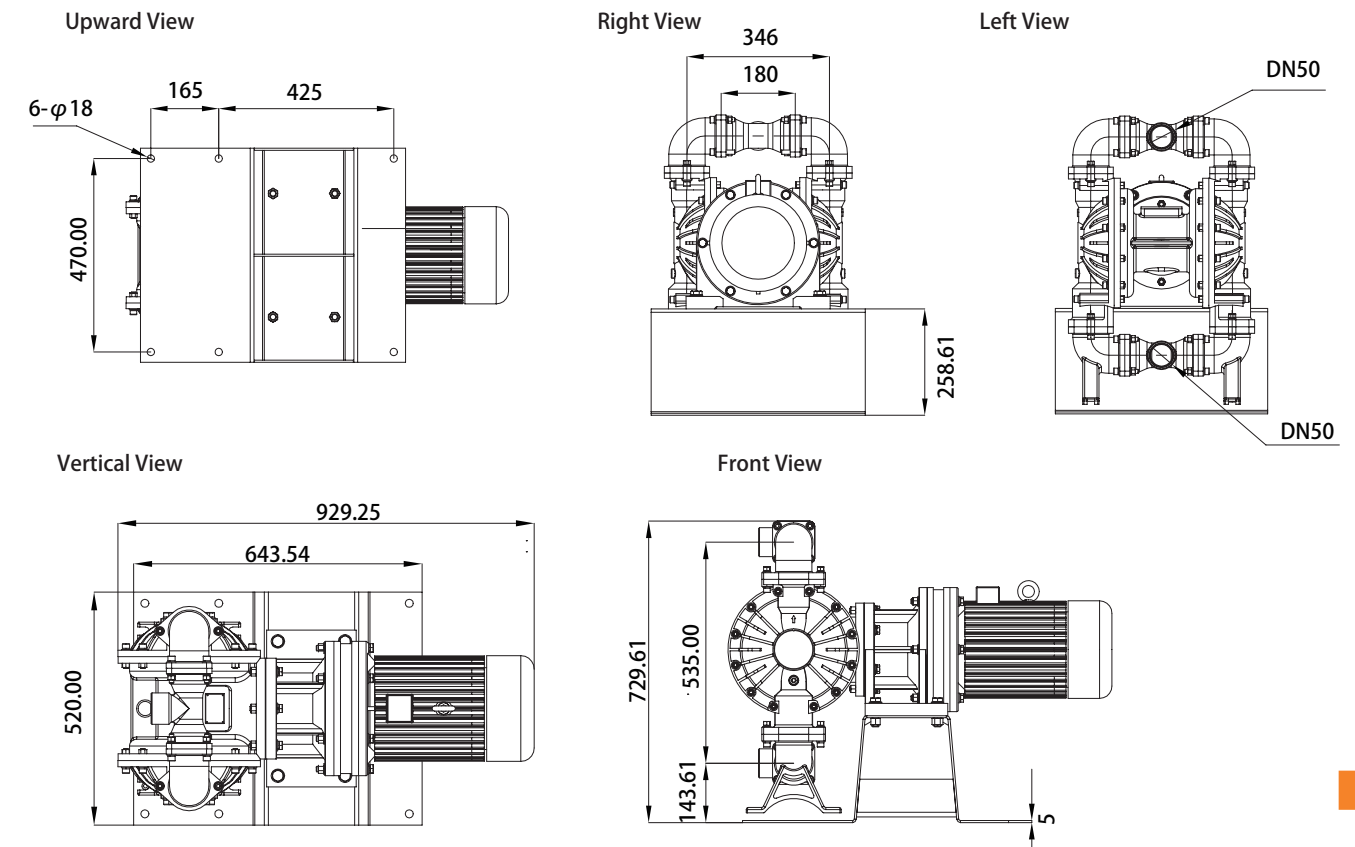
Stainless steel



## Parts List

No.	Name	No.	Name	No.	Name	No.	Name
01	Motor	02	Base	03	Ball Valve	04	Ball Seat
05	Ball Seat Sealing Ring	06	Stand Column	07	Eccentric Axis	08	Large Bearing
09	Large Washer	10	Small Bearing	11	Small Washer	12	Outlet Manifold
13	Tee Pipe Sealing Ring	14	Upper Elbow	15	Inspection Window	16	Splint Screw
17	Splint O-ring	18	Outer Splint	19	Teflon Diaphragm	20	Santoprene Diaphragm
21	Inner Splint	22	Axis Sleeve	23	Center Body	24	Inlet Manifold
25	Lower Elbow	26	Connecting Rod Axis				

## Installation dimensions





# DBY3-80 DBY3-100

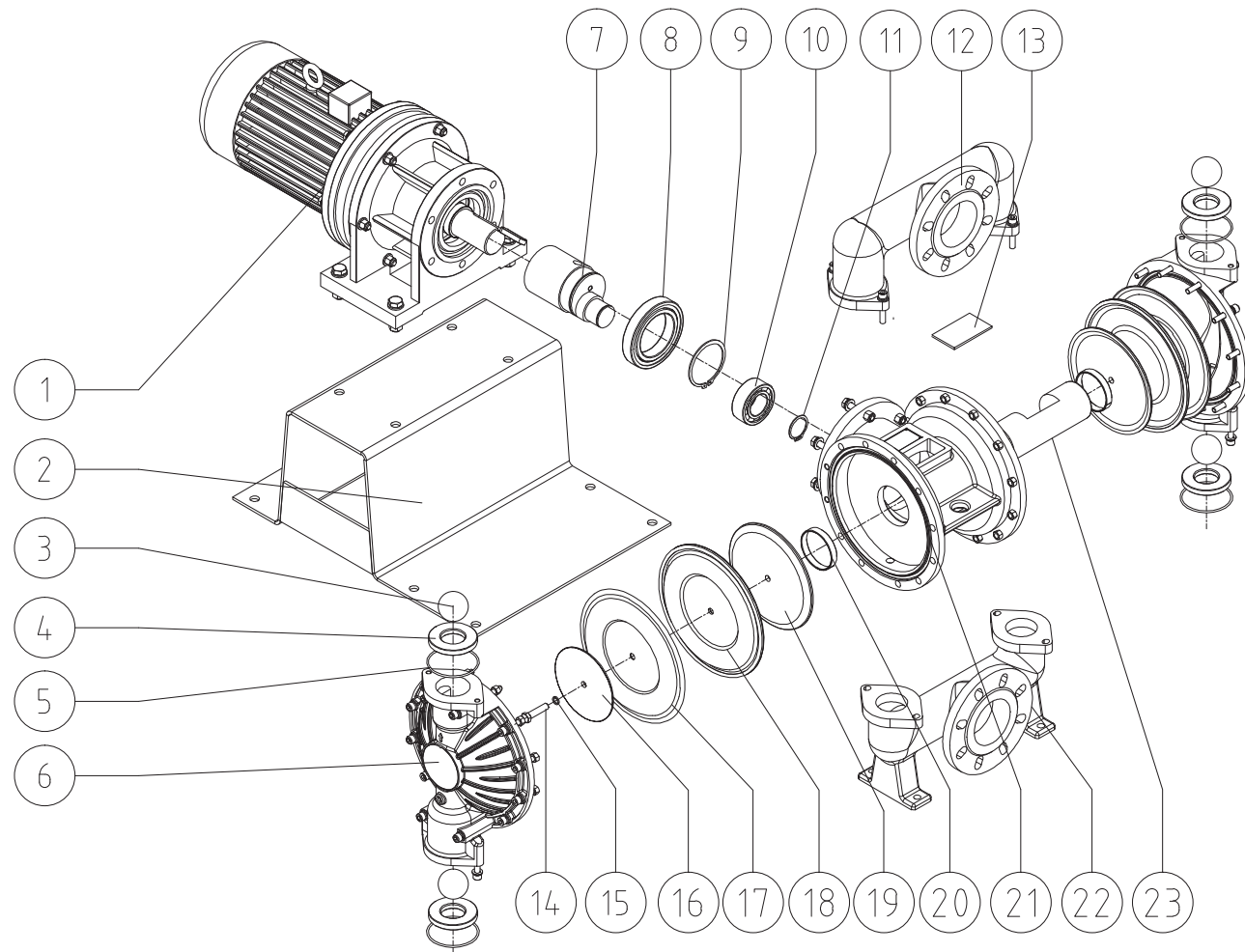
Aluminum alloy / Stainless steel / Nodular cast iron

## Specifications

	DBY3-80	DBY3S-80
Max. Flow Rate	245 lpm	245 lpm
Max. Head	40 m	70 m
Max. Suction Height	5 m	5 m
Max. Working Pressure	4bar	7 bar
Fluid Inlet/Outlet Size	DN80 (3" )	DN80 (3" )
Max. Permitted Grain	6.4 mm	6.4 mm
Outlet Pressure	0.4 Mpa	0.7 Mpa
Motor Power	3 kw	4 kw
Every Reciprocating Flow	3.9 L	3.9 L
Max. Reciprocating Speed	63 cpm	63 cpm
Pump body structure materials: Cast steel Nodular cast iron Aluminum alloy PP Stainless steel PVDF		



Aluminium alloy

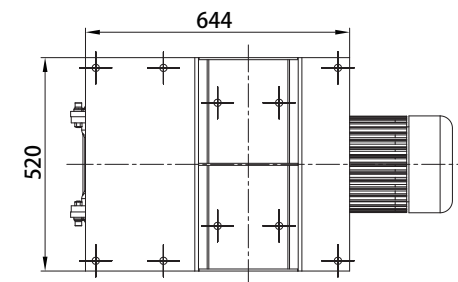


## Parts List

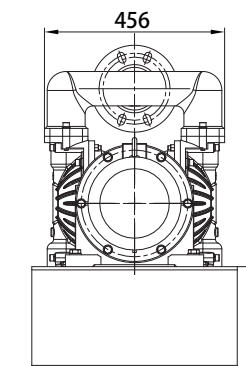
No.	Name	No.	Name	No.	Name	No.	Name
01	Motor	02	Base	03	Ball Valve	04	Ball Seat
05	Ball Seat Sealing Ring	06	Stand Column	07	Eccentric Axis	08	Large Bearing
09	Large Washer	10	Small Bearing	11	Small Washer	12	Outlet Manifold
13	Inspection Window	14	Splint Screw	15	Splint O-ring	16	Outer Splint
17	Teflon Diaphragm	18	Santoprene Diaphragm	19	Inner Splint	20	Axis Sleeve
21	Center Body	22	Inlet Manifold	23	Connecting Rod Axis		

## Installation dimensions

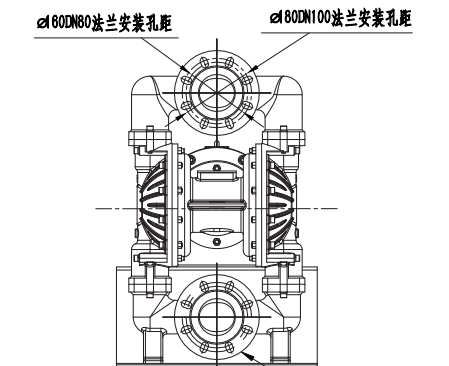
Upward View



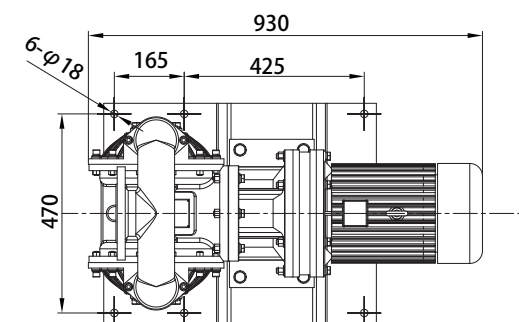
Right View



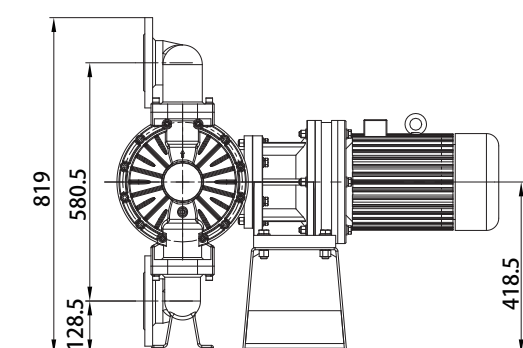
Left View



Vertical View



Front View



法兰标准为HG/T20598 PN16





# DBY3-80 DBY3-100

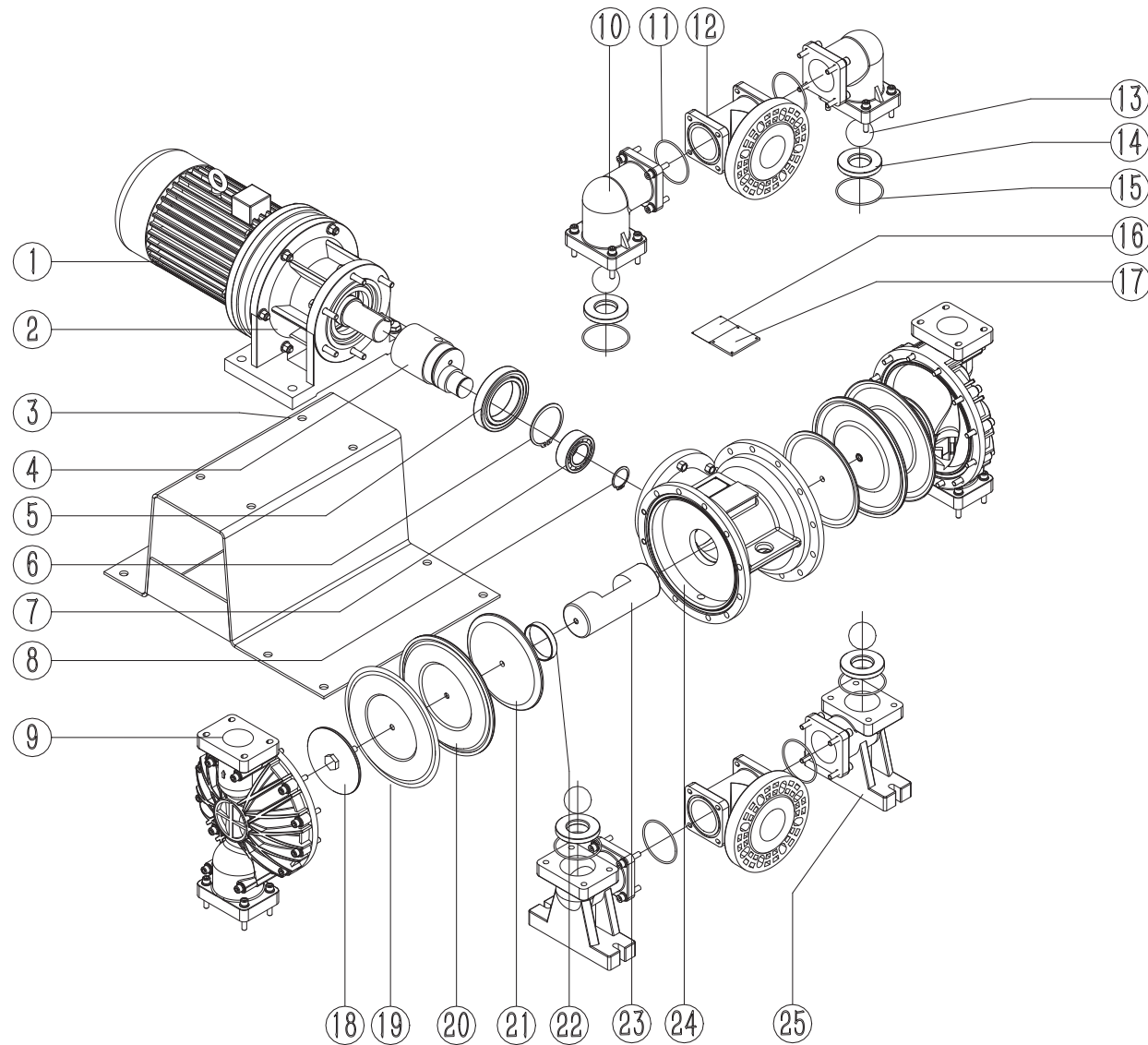
## Engineering plastics / Fluorine plastic

### Specifications

	DBY3-80	DBY3S-80
Max. Flow Rate	245 lpm	245 lpm
Max. Head	40 m	70 m
Max. Suction Height	5 m	5 m
Max. Working Pressure	4bar	7 bar
Fluid Inlet/Outlet Size	DN80 (3" )	DN80 (3" )
Max. Permitted Grain	6.4 mm	6.4 mm
Outlet Pressure	0.4 Mpa	0.7 Mpa
Motor Power	3 kw	4 kw
Every Reciprocating Flow	3.9 L	3.9 L
Max. Reciprocating Speed	63 cpm	63 cpm
Pump body structure materials: Cast steel Nodular cast iron Aluminum alloy PP Stainless steel PVDF		



Fluorine plastic

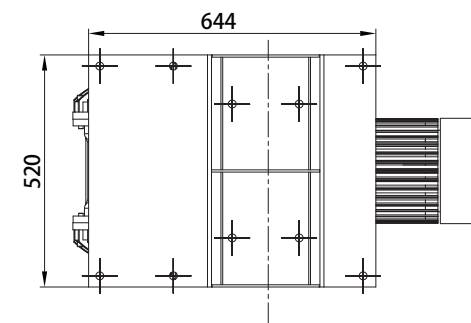


### Parts List

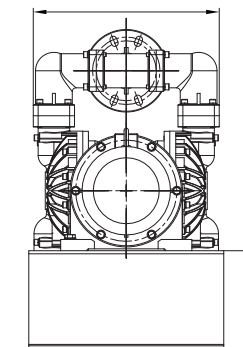
No.	Name	No.	Name	No.	Name	No.	Name
01	Motor	02	Reducer	03	Base	04	Eccentric Axis
05	Large Bearing	06	Large Washer	07	Small Bearing	08	Small Washer
09	Stand Column	10	Upper Elbow	11	Tee Sealing Ring	12	Tee Pipe
13	Ball Valve	14	Ball Seat	15	Ball Seat Sealing Ring	16	Nameplate
17	Inspection Window	18	Outer Splint	19	Teflon Diaphragm	20	Santoprene Diaphragm
21	Inner Splint	22	Connecting Rod Axis Sleeve	23	Connecting Rod Axis	24	Center Body
25	Lower Elbow						

### Installation dimensions

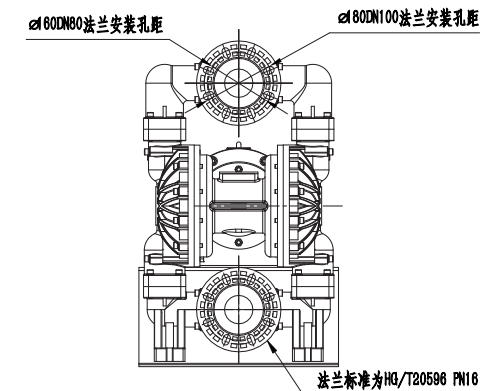
Upward View



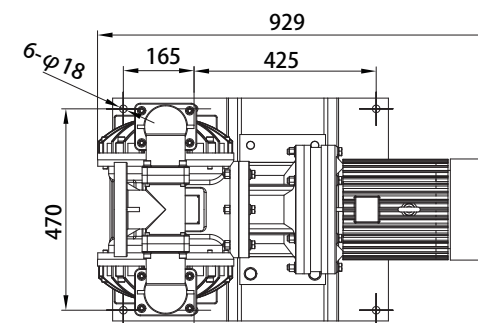
Right View



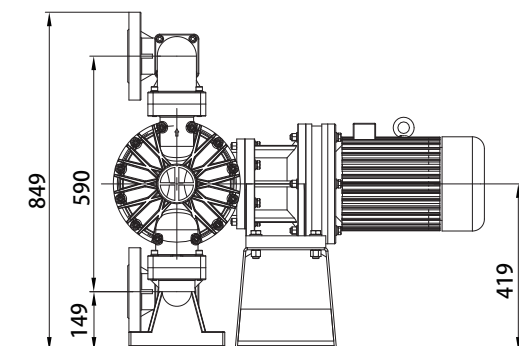
Left View

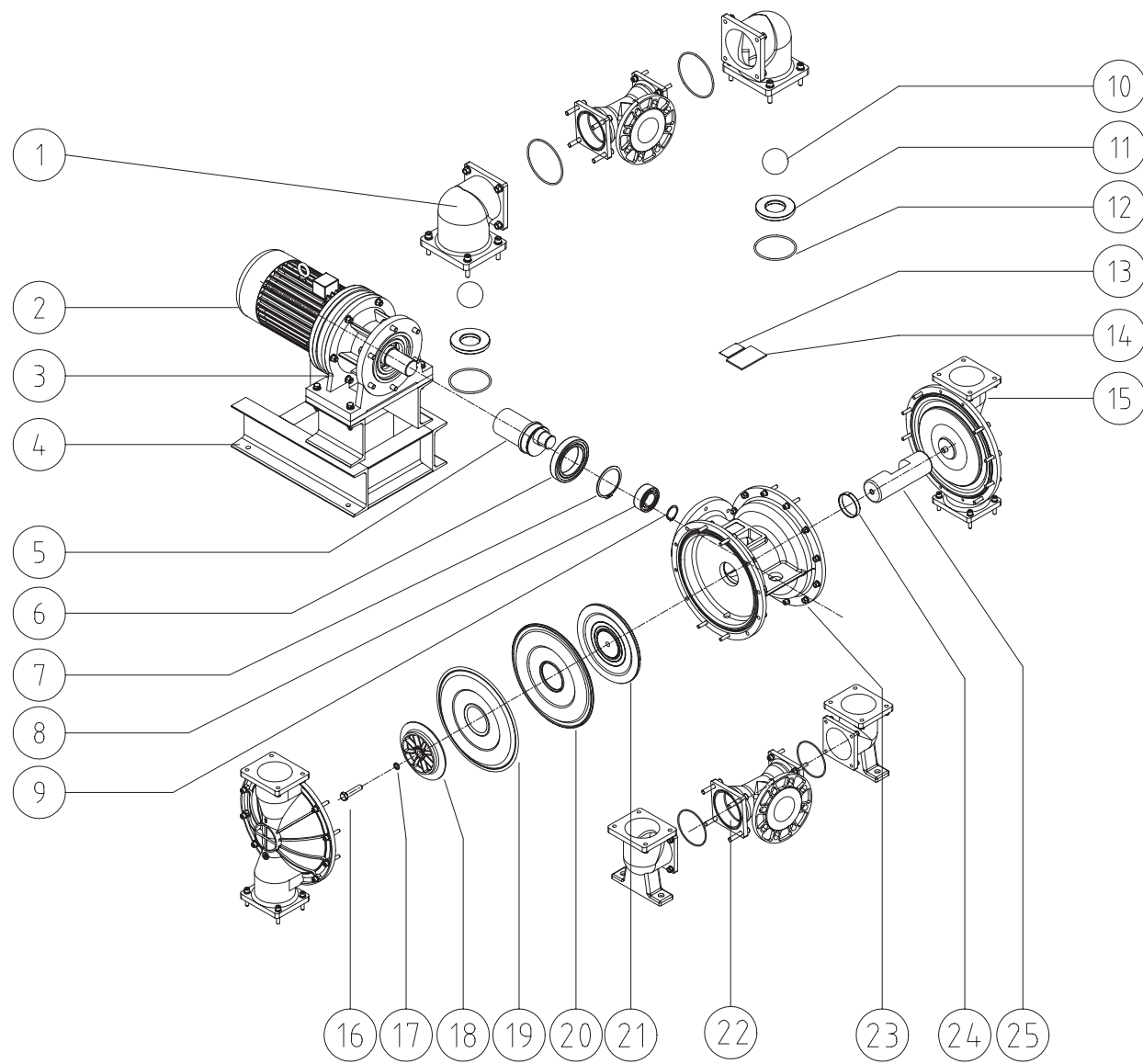


Vertical View



Front View





### Parts List

No.	Name	No.	Name	No.	Name	No.	Name
01	Upper Elbow	02	Motor	03	Reducer	04	Base
05	Eccentric Axis	06	Large Bearing	07	Large Washer	08	Small Washer
09	Small Washer	10	Ball Valve	11	Ball Seat	12	Ball Seat Sealing Ring
13	Inspection Window	14	Nameplate	15	Stand Column	16	Splint Screw
17	Splint O-ring	18	Outer Splint	19	Teflon Diaphragm	20	Santoprene Diaphragm
21	Inner Splint	22	Tee	23	Center Body	24	Axis Sleeve
25	Connecting Rod Axis						

## BFD-80

Aluminum alloy / Stainless steel  
Nodular cast iron / Engineering plastics  
Fluorine plastic

### Specifications

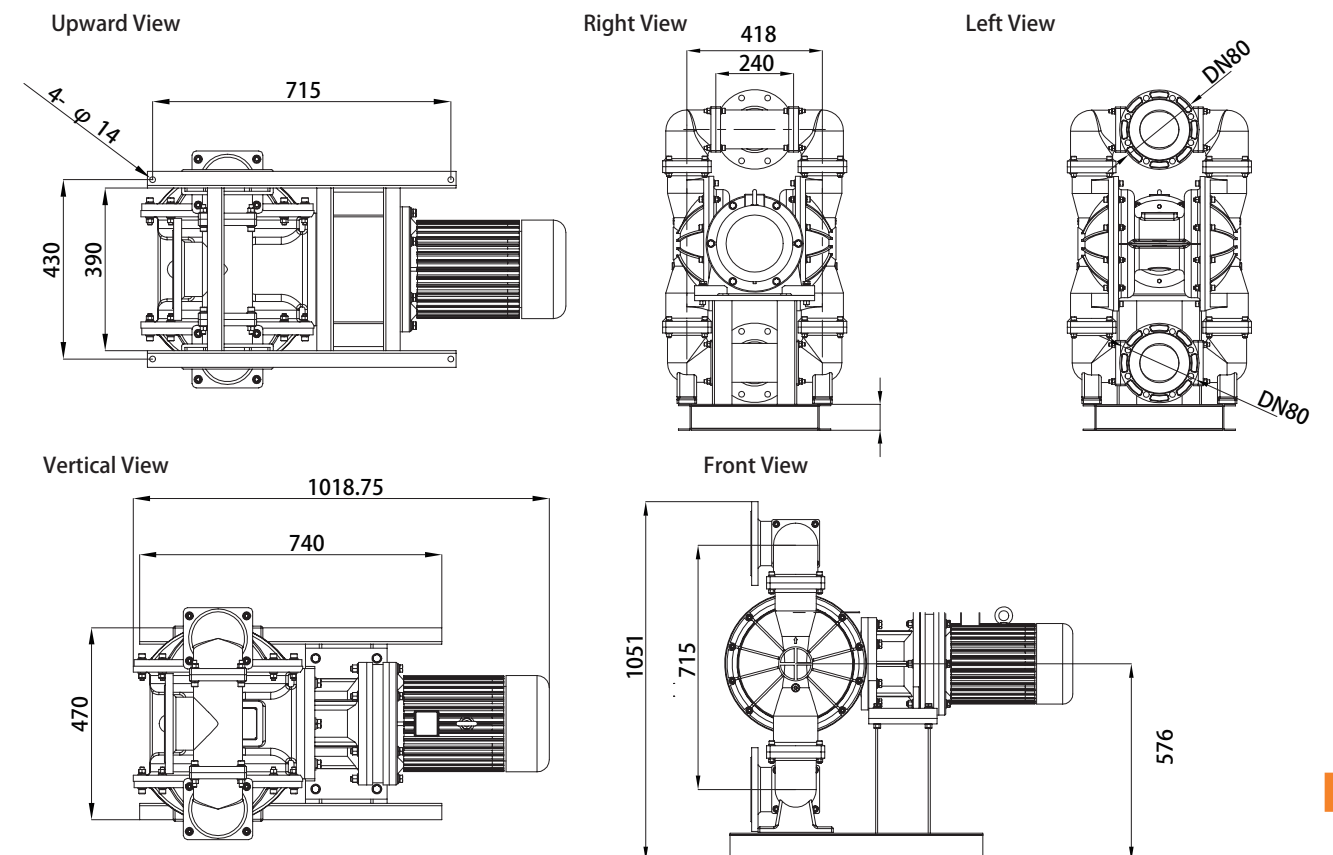
	BFD-80	BFDS-80
Max. Flow Rate	480 lpm	480 lpm
Max. Head	40 m	70 m
Max. Suction Height	6 m	6 m
Max. Working Pressure	4bar	7 bar
Fluid Inlet/Outlet Size	DN80 (3" )	DN80 (3" )
Max. Permitted Grain	9.4 mm	9.4 mm
Outlet Pressure	0.4 Mpa	0.7 Mpa
Motor Power	4 kw	5.5 kw
Every Reciprocating Flow	7.6 L	7.6 L
Max. Reciprocating Speed	63 cpm	63 cpm

Pump body structure materials: Cast steel Nodular cast iron Aluminum alloy PP Stainless steel PVDF



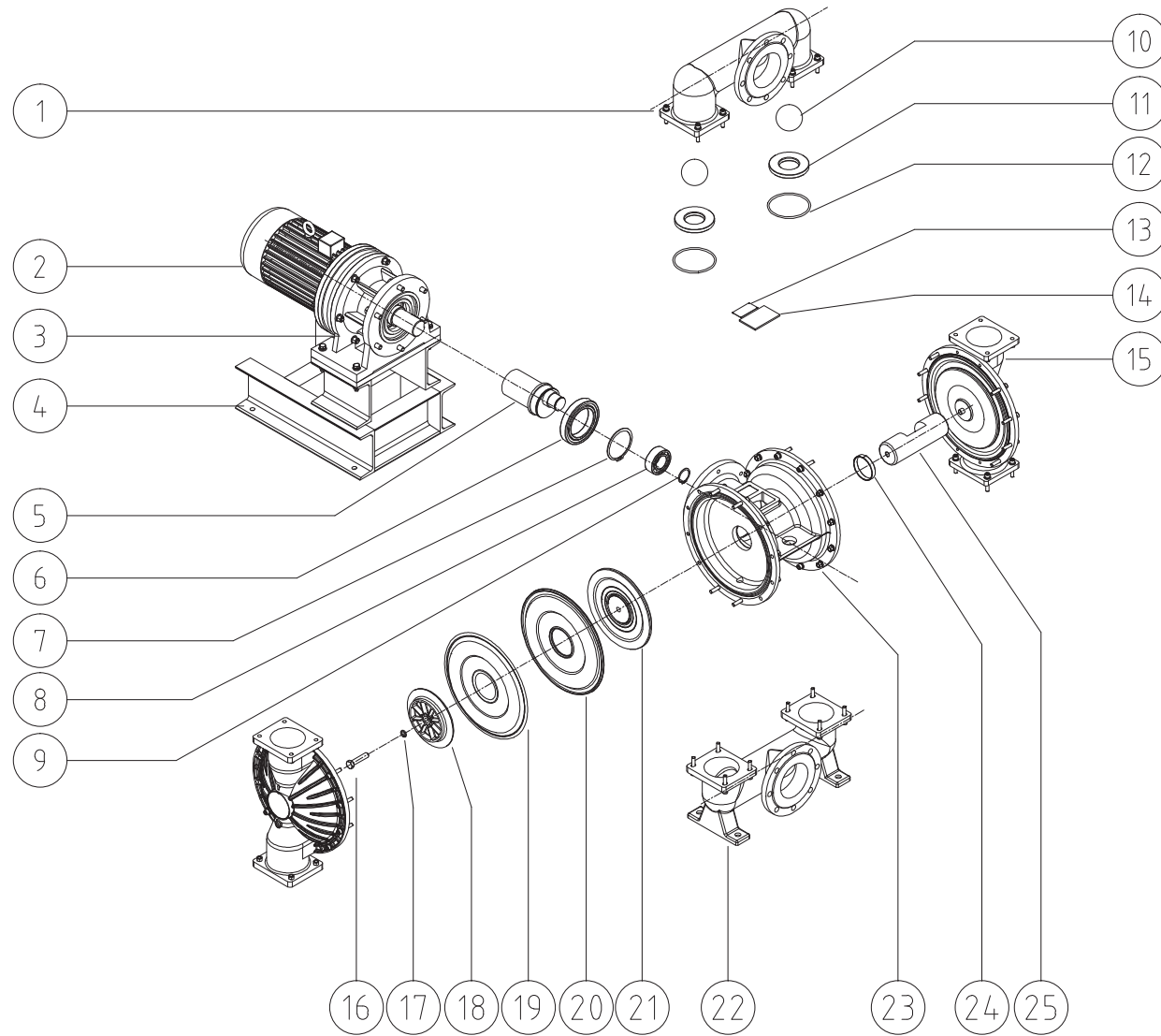
Stainless steel

### Installation dimensions



Note: GODO Manufacturing Co.,Ltd reserves the right to change product design without prior notice. Please consult sales for latest product size.





### Parts List

No.	Name	No.	Name	No.	Name	No.	Name
01	Outlet Manifold	02	Motor	03	Reducer	04	Base
05	Eccentric Axis	06	Large Bearing	07	Large Washer	08	Small Washer
09	Small Washer	10	Ball Valve	11	Ball Seat	12	Ball Seat Sealing Ring
13	Inspection Window	14	Nameplate	15	Stand Column	16	Splint Screw
17	Splint O-ring	18	Outer Splint	19	Teflon Diaphragm	20	Santoprene Diaphragm
21	Inner Splint	22	Inlet Manifold	23	Center Body	24	Axis Sleeve
25	Connecting Rod Axis						

## DBY3-125 Aluminum alloy

### Specifications

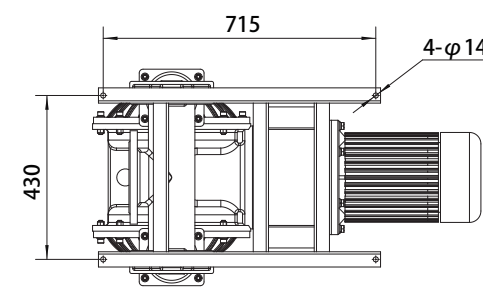
	DBY3-125	DBY3S-125
Max. Flow Rate	480 lpm	480 lpm
Max. Head	40 m	70 m
Max. Suction Height	6 m	6 m
Max. Working Pressure	4bar	7 bar
Fluid Inlet/Outlet Size	DN125 (5" )	DN125 (5" )
Max. Permitted Grain	9.4 mm	9.4 mm
Outlet Pressure	0.4 Mpa	0.7 Mpa
Motor Power	4 kw	5.5 kw
Every Reciprocating Flow	7.6 L	7.6 L
Max. Reciprocating Speed	63 cpm	63 cpm
Pump body structure materials: Cast steel Nodular cast iron Aluminum alloy PP Stainless steel PVDF		



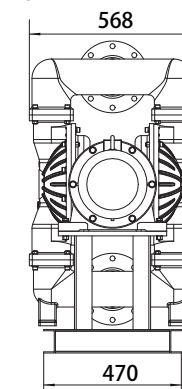
Aluminum alloy

### Installation dimensions

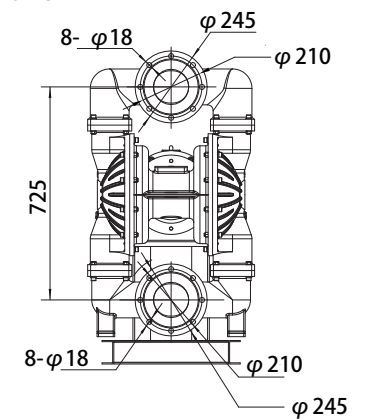
Upward View



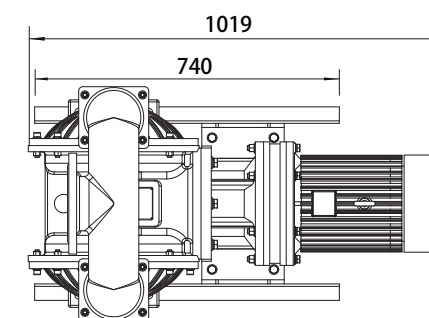
Right View



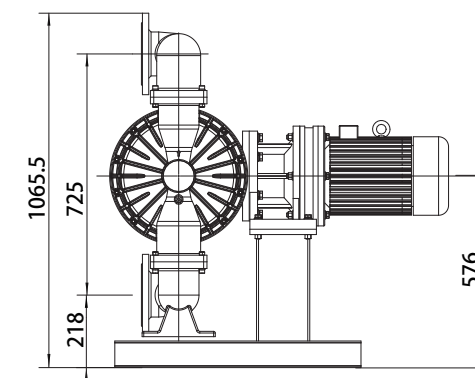
Left View



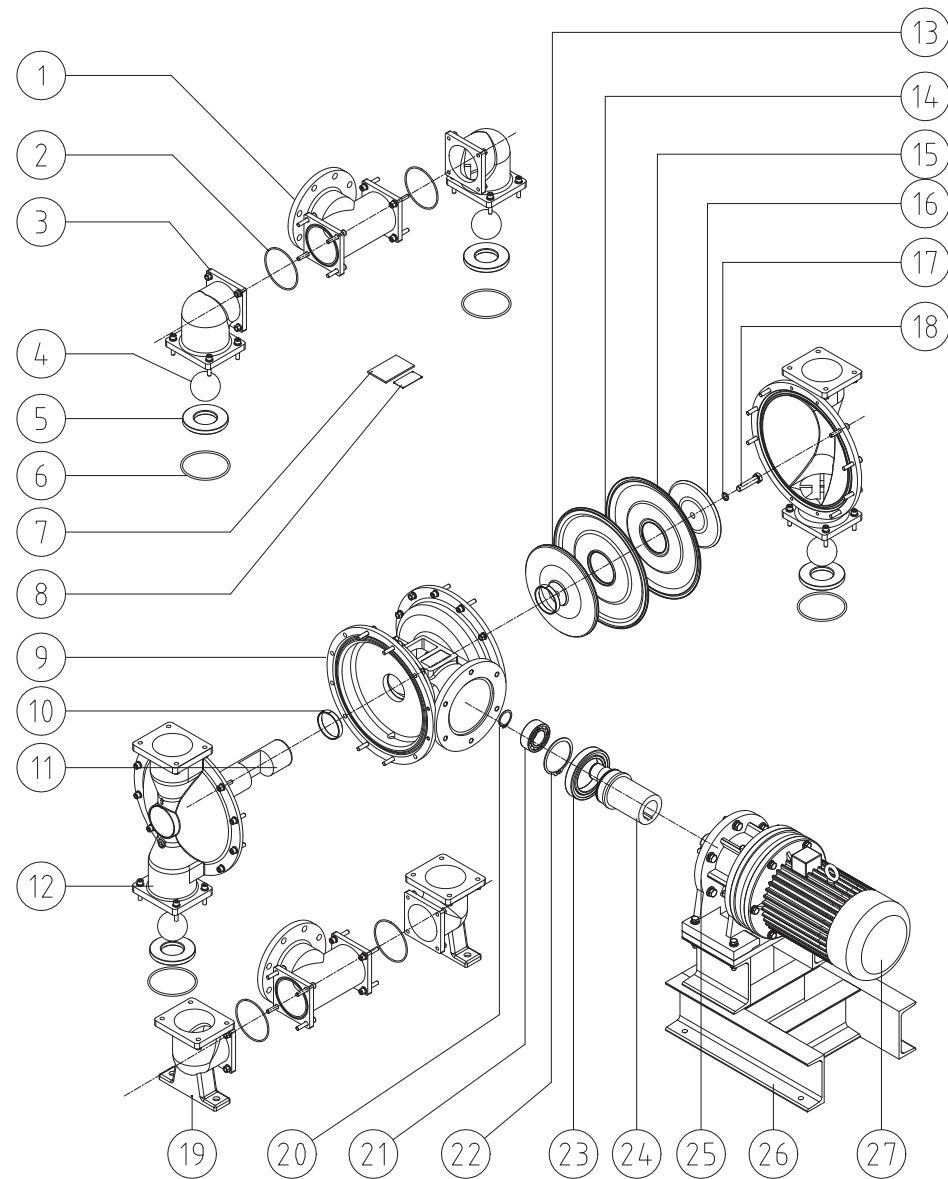
Vertical View



Front View



Note: GODO Manufacturing Co.,Ltd reserves the right to change product design without prior notice. Please consult sales for latest product size.



### Parts List

No.	Name	No.	Name	No.	Name	No.	Name
01	Tee	02	Tee Sealing Ring	03	Upper Elbow	04	Motor
05	Reducer	06	Base	07	Eccentric Axis	08	Large Bearing
09	Large Washer	10	Small Bearing	11	Small Washer	12	Ball Valve
13	Ball Seat	14	Ball Seat Sealing Ring	15	Inspection Window	16	Nameplate
17	Stand Column	18	Splint Screw	19	Splint O-ring	20	Outer Splint
21	Santoprene Diaphragm	22	Teflon Diaphragm	23	Inner Splint	24	Lower Elbow
25	Center Body	26	Axis Sleeve	27	Connecting Rod Axis		

## DBY3-125 Stainless steel / Nodular cast iron



Nodular cast iron

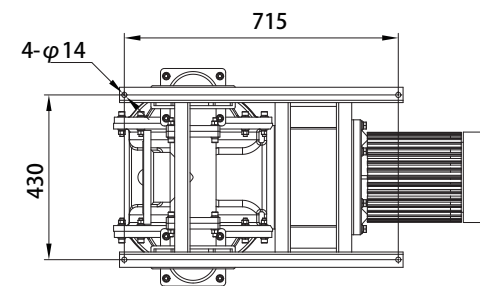
### Specifications

	DBY3-125	DBY3S-125
Max. Flow Rate	480 lpm	480 lpm
Max. Head	40 m	70 m
Max. Suction Height	6 m	6 m
Max. Working Pressure	4bar	7 bar
Fluid Inlet/Outlet Size	DN125 (5" )	DN125 (5" )
Max. Permitted Grain	9.4 mm	9.4 mm
Outlet Pressure	0.4 Mpa	0.7 Mpa
Motor Power	4 kw	5.5 kw
Every Reciprocating Flow	7.6 L	7.6 L
Max. Reciprocating Speed	63 cpm	63 cpm

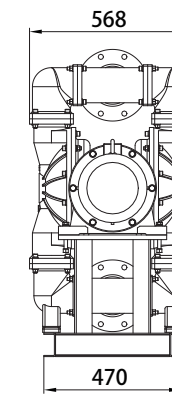
Pump body structure materials: Cast steel Nodular cast iron Aluminum alloy PP Stainless steel PVDF

### Installation dimensions

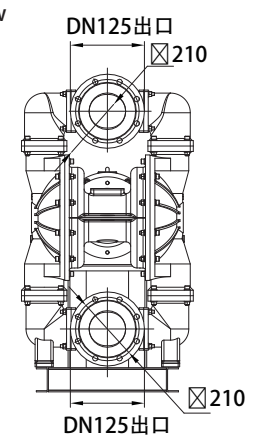
Upward View



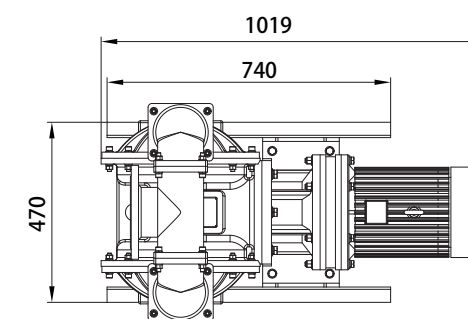
Right View



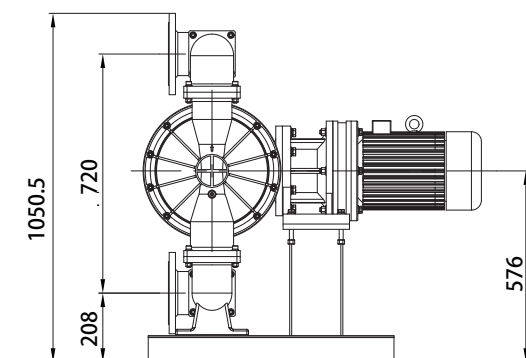
Left View



Vertical View



Front View



Note: GODO Manufacturing Co.,Ltd reserves the right to change product design without prior notice. Please consult sales for latest product size.



Related products

Pulse Damper



Powder diaphragm pump



Pneumatic FRL



Hand diaphragm pump



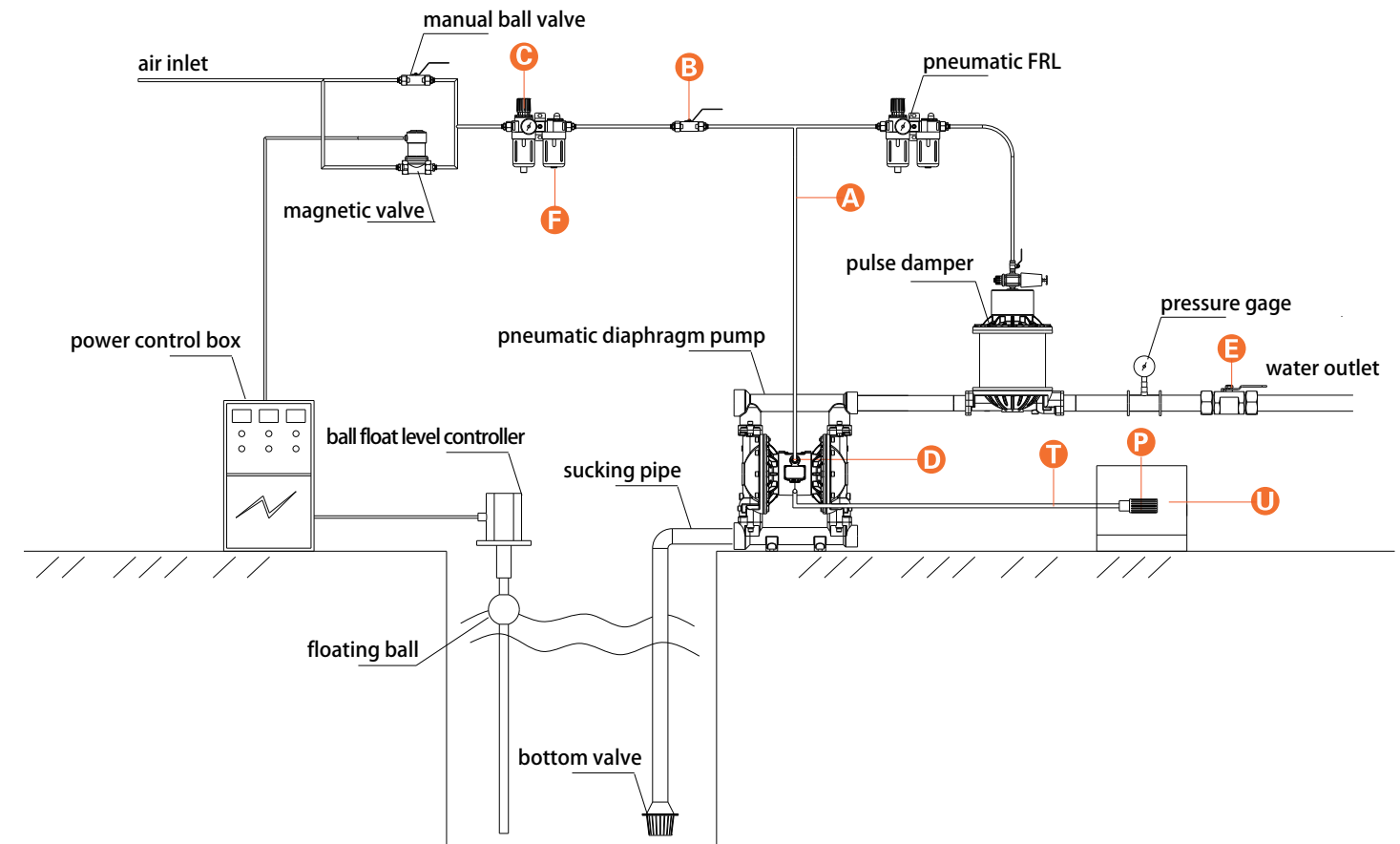
Sanitary diaphragm pump



Spray pump



Pump system drawing



- A** Gas Pipeline
- B** Cuprum Ball Valve
- C** Air Pressure Regulator
- D** Intake Pipe Quick Connection
- E** Leak Type Cuprum Ball Valve
- F** Pneumatic FRL
- P** Muffler
- T** Exhaust Pipe
- U** Container For Exhaust



# Anti-Corrosion Parameter List of Wetted Parts

Corrosive fluid	Liquid concentration (%)																			
	5	10	15	20	25	30	35	40	45	50	55	60	65	70	75	80	85	90	95	100
Acetic Acid(Ambient)																				
Acetic Acid (Hot)																				
Acetic Acid(Boiling)																				
Chromic Acids(Conc)																				
Nitric Acid																				
Phosphoric Acid(Ambient)																				
Phosphoric Acid(Hot)																				
Phosphoric Acid(Boiling)																				
Potassium Hydroxide(<140° F)																				
(<85° C) Potassium Hydroxide(<185° F)																				
Sodium Hypochloride																				
Magnesium Hydroxide																				
Sodium Hydroxide																				
Hydrochloric Acid																				
Hydrochloric Acid(Boiling)																				
Hydrofluoric Acid(Ambient)																				
Hydrofluoric Acid(Boiling)																				
Hydrofluoric Acid(Conc)																				
Sulfuric Acid(<125° F)																				
Sulfuric Acid(125~175° F)																				
Sulfuric Acid(Biling)																				

PP
  SST
  PTFE
  Without standard

# Anti-Corrosion Parameter List of Wetted Parts

Corrosive liquid	Aluminum	Stainless Steel	Polypropylene	Buna-N	EPDM	Nylon	Teflon	Polyester
	Asphalt							
Triethylamine								
Acetylene								
Linseed Oil								
Acetone								
Ethyl Alcohol								
Methyl Alcohol								
Amine Solvent								
Sulfuric Acid Liquor								
Whiskey								
Diethyl Ether								
Ethanolamine								
Ethylene Glycol								
LPG								
Zinc Chloride								
Chlorinated Paraffins								
HCl								
Copper Chloride								
NaCl								
Nickel Chloride								
Barium Chloride								
Magnesium Chloride								
Dichloromethane								
Chlorine								
Chlorin								
Octane								
Oleic Acid								
Finished Gasoline								
Grude Gasoline								
Sodium Perchlorate								
Fruit Juice								
Sodium Perborate								
Dimethylbenzene								
Formic Acid								
Volatile Oil								
Citric Acid								
Fat								
Tar								
Glycol								
Kreosote								
Cresylic Acid								
Trichloromethane								
Sodium Silicate								
Corn Oil								
Acetic Acid								
Isopropyl Acetate								
Acetic Acid Isobutyl Ester								
Acetidin								
Lime Acetate								
Butyl Acetate								
Sugar-cane								
Sugar Beet								
Oxygen								
Editpotassium Cyanide								
Sodium Cyanide								
Cyclohexane								
Oxalic Acid								
Silicone Oil								
Jet Fuel								
Fatty Acid								
Tartaric Acid								
Nitric Acid								
Aluminium Nitrate								
Ammonium Nitrate								
Zinc Nitrate								
Nitrate								
Calcium Nitrate								
Ferric Nitrate								
Sodium Nitrate								
Magnesium Nitrate								
Slaked Lime								
Vegetable Oil								
Calcium Nitrite								
Potassium Chloride								
Sodium Bicarbonate								
Stearic Acid								
Butyl Stearate								
Vinegar								
Mercury								
Ammonium Hydroxide								

The model in the table indicates that it is suitable  
Specific selection please consult the business department