

WL16 Components

Filter Choices

Media Type	$\beta_{x(c)} = 1000$	Length		Part No.	Comments
	Rating based on ISO 16889	in	mm		
DT Synthetic	2 μ m	9.04	230	P568816	DT-HF4-9-2UM
	5 μ m	9.04	230	P566270	DT-HF4-9-5UM
	8 μ m	9.04	230	P566271	DT-HF4-9-8UM
	12 μ m	9.04	230	P566272	DT-HF4-9-14UM
	23 μ m	9.04	230	P566273	DT-HF4-9-25UM
	2 μ m	18.44	468	P568817	DT-HF4-18-2UM
	5 μ m	18.32	465	P566274	DT-HF4-18-5UM
	8 μ m	18.32	465	P566275	DT-HF4-18-8UM
	12 μ m	18.32	465	P566276	DT-HF4-18-14UM
	23 μ m	18.32	465	P566277	DT-HF4-18-25UM
	2 μ m	27.90	709	P568818	DT-HF4-27-2UM
	5 μ m	27.75	705	P566278	DT-HF4-27-5UM
	8 μ m	27.75	705	P566279	DT-HF4-27-8UM
	14 μ m	27.75	705	P566280	DT-HF4-27-14UM
	25 μ m	27.75	705	P566281	DT-HF4-27-25UM

Service Part Choices

Description	Part No.
Head/Bowl/Housing Seal Kit - Nitrile	X011140
Head/Bowl/Housing Seal Kit - fluorocarbon	X011141
Assembly Cover Kit	X011052
Diffuser	X011919
Reservoir Weld Ring/Flange	X011058
Outlet Check Valve	X011053

Note:
Some service parts may not be stocked. Please contact your Donaldson sales representative for lead time details.

All Donaldson DT filters utilize glass fiber media with an epoxy-based resin system for the ultimate in chemical compatibility and are potted with epoxy-based adhesives. Standard collapse designs are double wire-backed using epoxy-coated steel mesh for maximum pleat support and dirt capacity. Fluorocarbon seals are standard on all Donaldson DT filters.



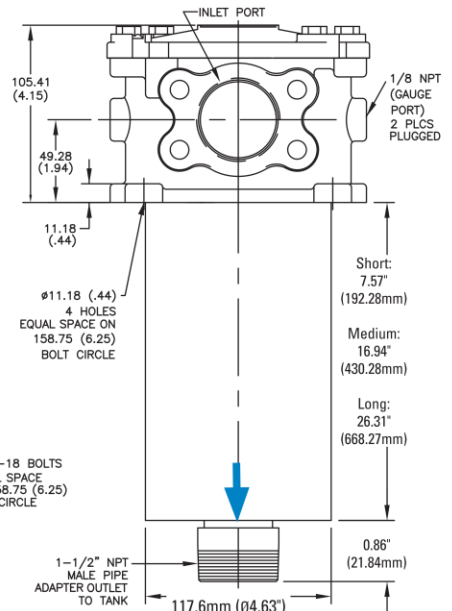
Filter Assembly Choices

Port Size	Bypass Rating	Seal Material	Indicator Style & Location	Housing Length	Assembly Length	Part No.
(2) SAE-24 O-Ring	25 psi / 1.72 bar	Nitrile	Port Machined & Plugged	9" (228.6mm)	12.76" (324.1mm)	P574232
(2) SAE-24 O-Ring	25 psi / 1.72 bar	Nitrile	Port Machined & Plugged	18" (457.2mm)	21.09" (535.6mm)	P574233
(2) SAE-24 O-Ring	25 psi / 1.72 bar	Nitrile	Port Machined & Plugged	27" (685.8mm)	30.46" (773.6mm)	P574234
(2) 1-1/2" SAE 4 Bolt Flange Code 61	25 psi / 1.72 bar	Nitrile	Port Machined & Plugged	18" (457.2mm)	21.09" (535.6mm)	P574235
(1) 1-1/2" SAE 4 Bolt Flange Code 61	50 psi / 3.45 bar	Nitrile	Port Machined & Plugged	18" (457.2mm)	21.09" (535.6mm)	P574236
(1) 1-1/2" SAE 4 Bolt Flange Code 61	50 psi / 3.45 bar	Nitrile	Port Machined & Plugged	27" (685.8mm)	30.46" (773.6mm)	P574237
(2) SAE-24 O-Ring	50 psi / 3.45 bar	Nitrile	Port Machined & Plugged	18" (457.2mm)	21.09" (535.6mm)	P575922
(2) SAE-24 O-Ring	50 psi / 3.45 bar	Nitrile	Port Machined & Plugged	27" (685.8mm)	30.46" (773.6mm)	P581657

WL16 Specification Illustrations

ASSEMBLY - SIDE VIEW

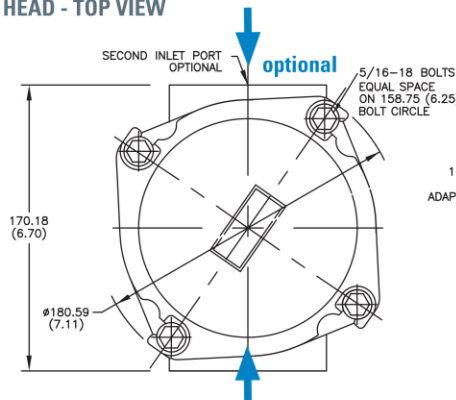
All dimensions are shown in millimeters [inches].



Indicator Choices

Indicator Pressure Setting	Connector Style	Part No.
Visual Pressure Gauges, 0-60 psi		
25 psi / 172 kPa	NA	X011059
50 psi / 345 kPa	NA	X011075
Visual Pressure Gauges, 0-200 psi		
50 psi / 345 kPa	NA	X011060
Electrical Service Indicator		
18 psi / 124 kPa	Hirschman	X011061
35 psi / 241 kPa	Hirschman	X011064
18 psi / 124 kPa	Brad Harrison	X011065
35 psi / 241 kPa	Brad Harrison	X011066

HEAD - TOP VIEW





W061

Max Flow: 100 gpm (379 lpm)



W061 Components

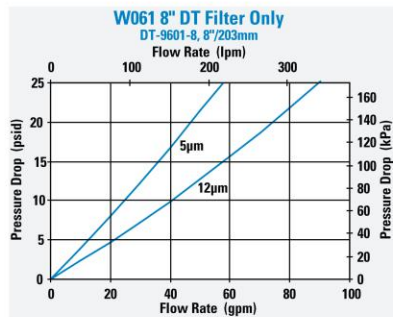
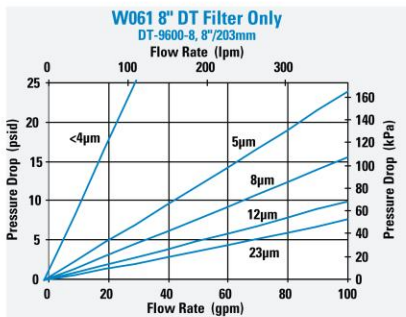
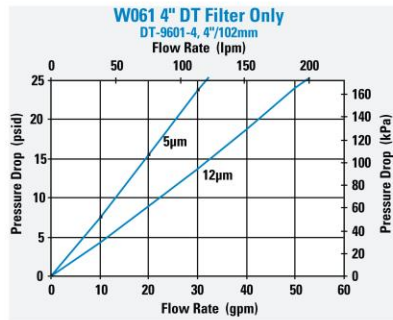
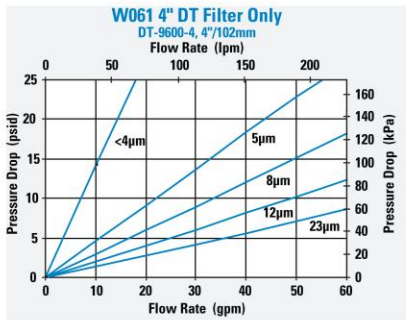
Filter Choices

Media Type	$\beta_{x(c)} = 2$	$\beta_{x(c)} = 1000$	Length		Part No.	Comments
	Rating based on ISO 16889		in	mm		
DT Synthetic		<4 μm	4.59	117	P566204	DT-9600-4-2UM
		5 μm	4.59	117	P566205	DT-9600-4-5UM
		5 μm	4.59	117	P167184	DT-9601-4-5UM, High collapse
		8 μm	4.59	117	P566206	DT-9600-4-8UM
		12 μm	4.59	117	P566207	DT-9600-4-14UM
		12 μm	4.59	117	P167843	DT-9601-4-14UM, High collapse
		23 μm	4.59	117	P566208	DT-9600-4-25UM
		<4 μm	8.22	209	P566209	DT-9600-8-2UM
		5 μm	8.22	209	P566210	DT-9600-8-5UM
		5 μm	8.22	209	P167185	DT-9601-8-5UM, High collapse
		8 μm	8.22	209	P566211	DT-9600-8-8UM
		12 μm	8.22	209	P566212	DT-9600-8-14UM
		12 μm	8.22	209	P167186	DT-9601-8-14UM, High collapse
		23 μm	8.22	209	P566213	DT-9600-8-25UM
		<4 μm	12.91	328	P566214	DT-9600-13-2UM
		5 μm	12.91	328	P566215	DT-9600-13-5UM
		5 μm	12.87	327	P167411	DT-9601-13-5UM, High collapse
		8 μm	12.91	328	P566216	DT-9600-13-8UM
		12 μm	12.91	328	P566217	DT-9600-13-14UM
		12 μm	12.87	327	P167412	DT-9601-13-14UM, High collapse
	23 μm	12.91	328	P566218	DT-9600-13-25UM	
Water Absorbing	10 μm		8.23	209	P569528	Absorbs 130 ml water @ 25 psid
	10 μm		12.87	327	P569529	Absorbs 220 ml water @ 25 psid



- Filter Notes:
- All Donaldson DT filters utilize glass fiber media with an epoxy-based resin system for the ultimate in chemical compatibility.
 - All Donaldson DT filters are potted with epoxy-based adhesives.
 - Standard collapse DT designs are double wire-backed using epoxy-coated steel mesh for maximum pleat support and dirt capacity.
 - DT high collapse designs are potted into machined aluminum end caps for greater filter integrity in critical applications.
 - Fluorocarbon seals are standard on all Donaldson DT filters.

Performance Data





Head Assembly Choices

Port Size	Bypass Rating	Seal Material	Indicator Style & Location	Part No.
SAE-12 O-Ring	50 psi / 3.45 bar	Nitrile	Port Machined & Plugged	P574242
SAE-16 O-Ring	50 psi / 3.45 bar	Nitrile	Port Machined & Plugged	P574243
SAE-16 O-Ring	25 psi / 1.72 bar	Fluorocarbon	Port Machined & Plugged	P575929

Housing Choices

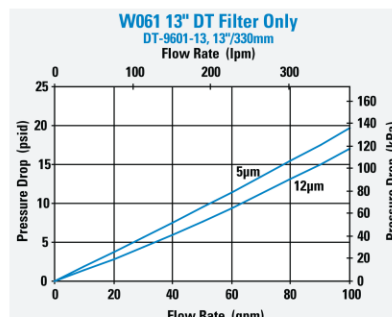
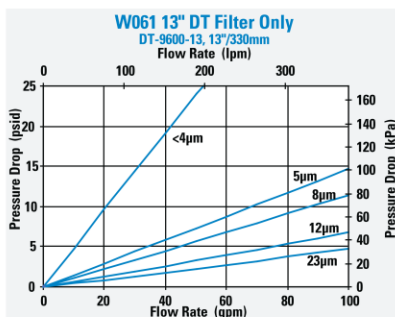
Housing Length	Seal Material	Part No.
4" (101.6mm)	Nitrile	X011115
8" (203.2mm)	Nitrile	X011111
13" (330.2mm)	Nitrile	X011117

Service Part Choices

Part No.	Description
X011160	Head/Bowl/Housing Seal Kit - nitrile
X011161	Head/Bowl/Housing Seal Kit - fluorocarbon

Indicator Choices

Indicator Pressure Setting	Connector Style	Seal Material	Part No.	Thermal Lockout	Surge Control	Reset
Visual Pop-up Models						
15 psi / 103 kPa	NA	Nitrile	P572345	No	No	Auto
35 psi / 241 kPa	NA	Nitrile	P572347	No	No	Auto
35 psi / 241 kPa	NA	Nitrile	P572348	Yes	Yes	Manual
35 psi / 241 kPa	NA	Fluorocarbon	P567456	Yes	Yes	Manual
Electrical / Visual Models						
15 psi / 103 kPa	Hirschman	Nitrile	P572323	No	No	Auto
35 psi / 241 kPa	Hirschman	Nitrile	P572327	No	No	Auto
35 psi / 241 kPa	Brad Harrison	Nitrile	P572329	No	No	Auto
35 psi / 241 kPa	Hirschman	Nitrile	P572384	Yes	Yes	Manual
35 psi / 241 kPa	Hirschman	Fluorocarbon	P567458	Yes	Yes	Manual
15 psi / 103 kPa	3 wire flying leads	Nitrile	P572342	No	No	Auto
35 psi / 241 kPa	3 wire flying leads	Nitrile	P572349	No	No	Auto
Electrical Models						
15 psi / 103 kPa	Hirschman	Nitrile	P572355	No	No	Auto
35 psi / 241 kPa	Hirschman	Nitrile	P572359	No	No	Auto
35 psi / 241 kPa	Brad Harrison	Nitrile	P572361	No	No	Auto





HPK02

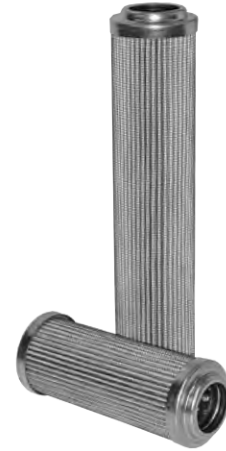
Max Flow: 20 gpm (76 lpm)



HPK02 Components

Filter Choices

Media Type	$\beta_{x(d)} = 1000$	Length		Part No.	Comments
	Rating based on ISO 16889	in	mm		
DT Synthetic	<4 μm	4.39	112	P566194	DT-9020-4-2UM
	5 μm	4.39	112	P566195	DT-9020-4-5UM
	5 μm	4.46	113	P167180	DT-9021-4-5UM, High Collapse
	8 μm	4.39	112	P566196	DT-9020-4-8UM
	12 μm	4.39	112	P566197	DT-9020-4-14UM
	12 μm	4.46	113	P167181	DT-9021-4-14UM, High Collapse
	23 μm	4.39	112	P566198	DT-9020-4-25UM
	<4 μm	8.18	208	P566199	DT-9020-8-2UM
	5 μm	8.18	208	P566200	DT-9020-8-5UM
	5 μm	8.18	208	P167182	DT-9021-8-5UM, High Collapse
	8 μm	8.18	208	P566201	DT-9020-8-8UM
	12 μm	8.18	208	P566202	DT-9020-8-14UM
	12 μm	8.18	208	P167183	DT-9021-8-14UM, High Collapse
	23 μm	8.18	208	P566203	DT-9020-8-25UM



Filter Notes: All Donaldson DT filters utilize glass fiber media with an epoxy-based resin system for the ultimate in chemical compatibility. All Donaldson DT filters are potted with epoxy-based adhesives. Standard collapse DT designs are double wire-backed using epoxy-coated steel mesh for maximum pleat support and dirt capacity. Refer to the table in the Technical Reference Guide for fluid compatibility with our filter media. If filtering diester, phosphate ester fluids, water glycol, water/oil emulsions, or HWCFF over 150°F/83°C, use filters with seals made of fluorocarbon. Donaldson "high collapse" filters, with their steel end caps and wire-backed media, are rated to withstand up to 3000 psi/ 20,700 kPa before collapsing. High collapse designs are also potted into machined aluminum endcaps for greater filter integrity in critical applications. The fluorocarbon seal/high collapse filters also use epoxy potting and media seam seals for added chemical compatibility. High collapse designs are double wire-backed using stainless steel mesh.

Housing Choices

Length	Part No.
Short	P167443
Long	P167452

Head Choices

Port Size	Bypass Rating	Indicators ¹	Part No.
SAE-12 O-Ring	50 psi/3.5 bar	Visual indicator, left side	P167728
SAE-12 O-Ring	No bypass	Visual indicator, left side	P167730

Notes on Indicators:
¹Donaldson uses the inlet port as the reference point. "Left side," for instance, means that the indicator mounts on the side of the filter head that is on your left when you face the inlet port.

Service Indicator Kits (All kits include indicator with mounting block)

Part No.	Bypass Valve Pressure of:	Description
Visual Service Indicators		
P569632	60 psi / 4.1 bar	35 psi/2.4 bar indicator kit auto reset pop-out button
P569633	90 psi / 6.2 bar	70 psi/4.8 bar indicator kit auto reset pop-out button
P567988	60 psi / 4.1 bar	35 psi/2.4 bar indicator kit auto reset pop-out button with thermal lockout and surge control
P567989	90 psi / 6.2 bar	70 psi/4.8 bar indicator kit* auto reset pop-out button with thermal lockout and surge control
AC/DC Visual/Electrical Service Indicators		
P569634	60 psi / 4.1 bar	35 psi/2.4 bar indicator kit Hirschmann receptacle 115 VAC/28 VDC, 2 amps
P569635	90 psi / 6.2 bar	70 psi/4.8 bar indicator kit Hirschmann receptacle 115 VAC/28 VDC, 2 amps
P567986	60 psi / 4.1 bar	35 psi/2.4 bar indicator kit with thermal lockout and surge control, Hirschmann receptacle, 115 VAC/28 VDC, 2 amps, 4 pin DIN 43650
P567987	90 psi / 6.2 bar	70 psi/4.8 bar indicator kit with thermal lockout and surge control, Hirschmann receptacle, 115 VAC/28 VDC, 2 amps, 4 pin DIN 43650



FPK02

Max Flow: 25 gpm (95 lpm)

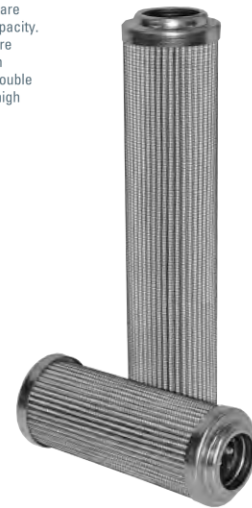
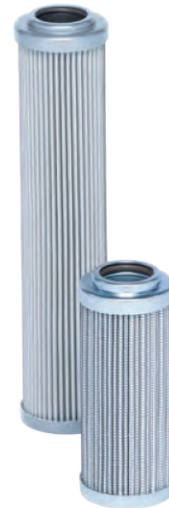


FPK02 Components

Filter Choices

Media Type	$\beta_{(G)} = 1000$	Length		Part No.	Comments
	Rating based on ISO 16889	in	mm		
DT Synthetic	<4 μm	4.39	112	P566194	DT-9020-4-2UM
	5 μm	4.39	112	P566195	DT-9020-4-5UM
	5 μm	4.46	113	P167180	DT-9021-4-5UM, High Collapse
	8 μm	4.39	112	P566196	DT-9020-4-8UM
	12 μm	4.39	112	P566197	DT-9020-4-14UM
	12 μm	4.46	113	P167181	DT-9021-4-14UM, High Collapse
	23 μm	4.39	112	P566198	DT-9020-4-25UM
	<4 μm	8.18	208	P566199	DT-9020-8-2UM
	5 μm	8.18	208	P566200	DT-9020-8-5UM
	5 μm	8.18	208	P167182	DT-9021-8-5UM, High Collapse
	8 μm	8.18	208	P566201	DT-9020-8-8UM
	12 μm	8.18	208	P566202	DT-9020-8-14UM
	12 μm	8.18	208	P167183	DT-9021-8-14UM, High Collapse
	23 μm	8.18	208	P566203	DT-9020-8-25UM

Filter Notes: All Donaldson DT filters utilize glass fiber media with an epoxy-based resin system for the ultimate in chemical compatibility. All Donaldson DT filters are potted with epoxy-based adhesives. Standard collapse DT designs are double wire-backed using epoxy-coated steel mesh for maximum pleat support and dirt capacity. Fluorocarbon seals are standard on all Donaldson DT filters. Refer to the table in the Technical Reference Guide for fluid compatibility with our filter media. If you're filtering diester, phosphate ester fluids, water glycol, water/oil emulsions, and HWCF over 150°F/83°C, use filters with seals made of fluorocarbon. Donaldson "high collapse" filters, with their steel end caps and wire-backed media, are rated to withstand up to 3000 psi/ 20,700 kPa before collapsing. High collapse designs are double wire-backed using stainless steel mesh and are potted into machined aluminum endcaps for greater filter integrity in critical applications. The fluorocarbon seal/high collapse filters also use epoxy potting and media seam seals for added chemical compatibility.



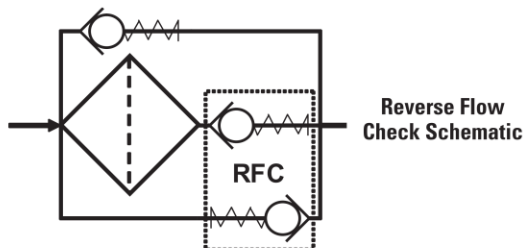
Housing Choices

Length (in)	Part No.
4.4" filter	P762769
8.2" filter	P762770

Head Choices

Port Size	Bypass Rating	Part No.
SAE-12 O-Ring	87 psi / 6 bar	P762766
SAE-12 O-Ring with reverse-flow check valve	87 psi / 6 bar	P762767
SAE-12 O-Ring	No Bypass	P762768

NOTE: Indicator port is machined and plugged. Replace plug with indicator of choice: P171945 (visual) or P761056 (electrical).





W350 Components

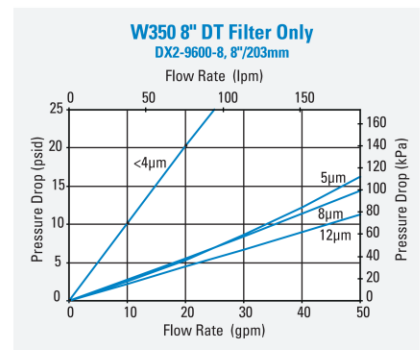
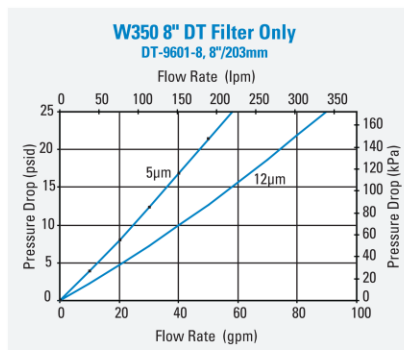
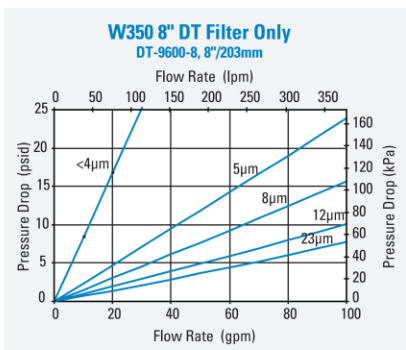
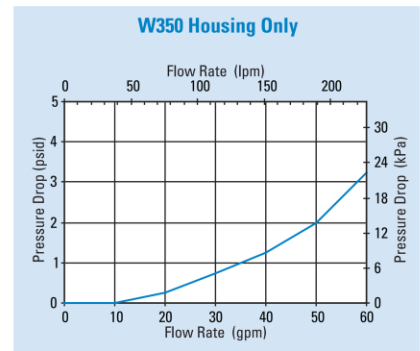
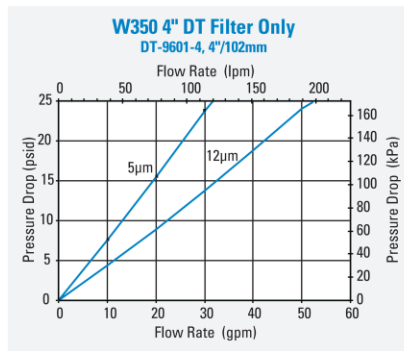
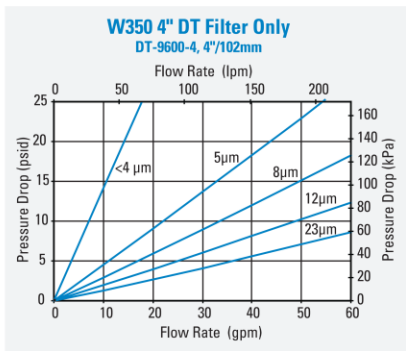
Filter Choices

Media Type	$\beta_{x(c)} = 2$	$\beta_{x(c)} = 1000$	Length		Part No.	Comments
	Rating based on ISO 16889		in	mm		
DT Synthetic		<4 μm	4.59	117	P566204	DT-9600-4-2UM
		5 μm	4.59	117	P566205	DT-9600-4-5UM
		5 μm	4.56	116	P167184	DT-9601-4-5UM, High collapse
		8 μm	4.59	117	P566206	DT-9600-4-8UM
		12 μm	4.59	117	P566207	DT-9600-4-14UM
		12 μm	4.56	116	P167843	DT-9601-4-14UM, High collapse
		23 μm	4.59	117	P566208	DT-9600-4-25UM
		<4 μm	8.22	209	P566209	DT-9600-8-2UM
		5 μm	8.22	209	P566210	DT-9600-8-5UM
		5 μm	8.19	208	P167185	DT-9601-8-5UM, High collapse
		8 μm	8.22	209	P566211	DT-9600-8-8UM
		12 μm	8.22	209	P566212	DT-9600-8-14UM
		12 μm	8.19	208	P167186	DT-9601-8-14UM, High collapse
	23 μm	8.22	209	P566213	DT-9600-8-25UM	
Water Absorbing	10 μm		8	209	P569528	Absorbs 130 ml water @ 25 psid



Filter Notes: All Donaldson DT filters utilize glass fiber media with an epoxy-based resin system for the ultimate in chemical compatibility. All Donaldson DT filters are potted with epoxy-based adhesives. Standard collapse DT designs are double wire-backed using epoxy-coated steel mesh for maximum pleat support and dirt capacity. High collapse designs are double wire-backed using stainless steel mesh. High collapse designs are also potted into machined aluminum endcaps for greater filter integrity in critical applications. Fluorocarbon seals are standard on all Donaldson DT filters.

Performance Data



HPK03 Components

Filter Choices

Media Type	$\beta_{x(c)} = 1000$	$\beta_{x(c)} = 2$	Length		Part No.	Comments
	Rating based on ISO 16889		in	mm		
DT Synthetic	<4 μm		8.22	209	P566209	DT-9600-8-2UM
	5 μm		8.22	209	P566210	DT-9600-8-5UM
	5 μm		8.22	209	P167185	DT-9601-8-5UM, High Collapse
	8 μm		8.22	209	P566211	DT-9600-8-8UM
	12 μm		8.22	209	P566212	DT-9600-8-14UM
	12 μm		8.22	209	P167186	DT-9601-8-14UM, High Collapse
	23 μm		8.22	209	P566213	DT-9600-8-25UM
Water Absorbing		10 μm	8.22	209	P569528	
Wire Mesh		75 μm	8.22	209	P162233	

Filter Notes: All Donaldson DT filters utilize glass fiber media with an epoxy-based resin system for the ultimate in chemical compatibility. All Donaldson DT filters are potted with epoxy-based adhesives. Standard collapse DT designs are double wire-backed using epoxy-coated steel mesh for maximum pleat support and dirt capacity. Fluorocarbon seals are standard on all Donaldson DT filters. Refer to the table in the Technical Reference Guide for fluid compatibility with our filter media. If filtering diester, phosphate ester fluids, water glycol, water/oil emulsions, or HWCFC over 150°F/83°C, use filters with seals made of fluorocarbon. Donaldson "high collapse" filters, with their steel end caps and wire-backed media, are rated to withstand up to 3000 psi/ 20,700 kPa before collapsing. High collapse designs are also potted into machined aluminum endcaps for greater filter integrity in critical applications. The fluorocarbon seal/high collapse filters also use epoxy potting and media seam seals for added chemical compatibility.



Housing Choices

Length	Part No.
8.22" (208.8mm) filter	P179579

The **P179579** housing is 10.73 inches (273mm) long and accepts the filter that is 8.22 inches (208.8mm) long. It includes a head-to-housing seal.

Head Choices

Port Size	Bypass Rating	Indicators*	Part No.
SAE-16 O-Ring	50 psi / 3.5 bar	Visual indicator, left side	P166353
SAE-12 O-Ring	50 psi / 3.5 bar	Visual indicator, left side	P170489
SAE-12 O-Ring	No bypass	Visual indicator, left side	P170491

Notes
*Donaldson uses the inlet port as the reference point. "Left side," for instance, means that the indicator mounts on the side of the filter head that is on your left when you face the inlet port.



FPK04

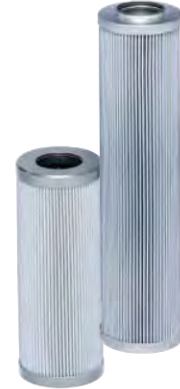
Max Flow: 100 gpm (379 lpm)



FPK04 Components

Filter Choices

Media Type	$\beta_{x(c)} = 1000$	$\beta_{x(c)} = 2$	Length		Part No.	Comments
	Rating based on ISO 16889		in	mm		
DT Synthetic	<4 μm		4.59	117	P566204	DT-9600-4-2UM
	5 μm		4.59	117	P566205	DT-9600-4-5UM
	5 μm		4.58	116.3	P167184	DT-9601-4-5UM, High Collapse
	8 μm		4.59	117	P566206	DT-9600-4-8UM
	12 μm		4.59	117	P566207	DT-9600-4-14UM
	12 μm		4.58	116.3	P167843	DT-9601-8-14UM, High Collapse
	23 μm		4.59	117	P566208	DT-9600-4-25UM
	<4 μm		8.22	209	P566209	DT-9600-8-2UM
	5 μm		8.22	209	P566210	DT-9600-8-5UM
	5 μm		8.20	208.3	P167185	DT-9601-4-14UM, High Collapse
	8 μm		8.22	209	P566211	DT-9600-8-8UM
	12 μm		8.22	209	P566212	DT-9600-8-14UM
	12 μm		8.20	208.3	P167186	DT-9601-13-5UM, High Collapse
	23 μm		8.22	209	P566213	DT-9600-8-25UM
	<4 μm		12.91	328	P566214	DT-9600-13-2UM
	5 μm		12.91	328	P566215	DT-9600-13-5UM
	5 μm		12.88	327.2	P167411	DT-9601-8-5UM, High Collapse
	8 μm		12.91	328	P566216	DT-9600-13-8UM
	12 μm		12.91	328	P566217	DT-9600-13-14UM
	12 μm		12.88	327.2	P167412	DT-9601-13-14UM, High Collapse
23 μm		12.91	328	P566218	DT-9600-13-25UM	
Water Absorbing		10 μm	8.20	208.3	P569528	9600 Absorbs 180 ml of water @ 25 psid
		10 μm	12.93	328.4	P569529	9600 Absorbs 220 ml of water @ 25 psid
Wire Mesh		75 μm	8.20	208.3	P162233	9600 Nitrile, Wire mesh



Filter Notes: All Donaldson DT filters utilize glass fiber media with an epoxy-based resin system for the ultimate in chemical compatibility. All Donaldson DT filters are potted with epoxy-based adhesives. Standard collapse DT designs are double wire-backed using epoxy-coated steel mesh for maximum pleat support and dirt capacity. Fluorocarbon seals are standard on all Donaldson DT filters. Refer to the table in the Technical Reference Guide for fluid compatibility with our filter media. If you're filtering diester, phosphate ester fluids, water glycol, water/oil emulsions, and HWCFC over 150°F/83°C, use filters with seals made of fluorocarbon. High collapse designs are double wire-backed using stainless steel mesh. High collapse designs are also potted into machined aluminum endcaps for greater filter integrity in critical applications. Donaldson "high collapse" filters, with their steel end caps and wire-backed media, are rated to withstand up to 3000 psi/ 20,700 kPa before collapsing. The fluorocarbon seal/high collapse filters also use epoxy potting and media seam seals for added chemical compatibility.

Head Choices

Port Size	Bypass Rating	Indicators	Part No.
SAE-20	87 psi / 6 bar	plugged only	P568720
SAE-20	No bypass	plugged only	P568721

Housing Choices

Filter Length	Part No.
4.6" (116.8mm)	P568722
8.2" (208.3mm)	P568723
12.9" (327.7mm)	P568724

Notes: Housings include the head to housing seal.

Indicator Choices

Set Point / Type	Part No.
39 psi / 2.7 bar, electrical, normally open.	P165194
39 psi / 2.7 bar, electrical, normally closed, D.C. two-wire	P574967
39 psi / 2.7 bar, electrical, normally open, D.C. two-wire	P574968



W620 Components

Filter Choices

Media Type	$\beta_{x(c)} = 1000$	Length		Part No.	Comments
	Rating based on ISO 16889	in	mm		
DT Synthetic	<4 μm	4.59	117	P566204	DT-9600-4-2UM
	5 μm	4.59	117	P566205	DT-9600-4-5UM
	5 μm	4.56	116	P167184	DT-9601-4-5UM, High Collapse
	8 μm	4.59	117	P566206	DT-9600-4-8UM
	12 μm	4.59	117	P566207	DT-9600-4-14UM
	12 μm	4.56	116	P167843	DT-9601-4-14UM, High Collapse
	23 μm	4.59	117	P566208	DT-9600-4-25UM
	<4 μm	8.22	209	P566209	DT-9600-8-2UM
	5 μm	8.22	209	P566210	DT-9600-8-5UM
	5 μm	8.19	208	P167185	DT-9601-8-5UM, High Collapse
	8 μm	8.22	209	P566211	DT-9600-8-8UM
	12 μm	8.22	209	P566212	DT-9600-8-14UM
	12 μm	8.19	208	P167186	DT-9601-8-14UM, High Collapse
	23 μm	8.22	209	P566213	DT-9600-8-25UM
	<4 μm	12.91	328	P566214	DT-9600-13-2UM
	5 μm	12.91	328	P566215	DT-9600-13-5UM
	5 μm	12.85	326	P167411	DT-9601-13-5UM, High Collapse
	8 μm	12.91	328	P566216	DT-9600-13-8UM
	12 μm	12.91	328	P566217	DT-9600-13-14UM
	12 μm	12.85	326	P167412	DT-9601-13-14UM, High Collapse
	23 μm	12.91	328	P566218	DT-9600-13-25UM
	<4 μm	16.84	428	P566219	DT-9600-16-2UM
	5 μm	16.84	428	P566220	DT-9600-16-5UM
	5 μm	16.84	428	P167187	DT-9601-16-5UM, High Collapse
	8 μm	16.84	428	P566221	DT-9600-16-8UM
	12 μm	16.84	428	P566222	DT-9600-16-14UM
	12 μm	16.84	428	P167188	DT-9601-16-14UM, High Collapse
	23 μm	16.84	428	P566223	DT-9600-16-25UM



Filter Notes: All Donaldson DT filters utilize glass fiber media with an epoxy-based resin system for the ultimate in chemical compatibility. All Donaldson DT filters are potted with epoxy-based adhesives. Standard collapse DT designs are double wire-backed using epoxy-coated steel mesh for maximum pleat support and dirt capacity. Fluorocarbon seals are standard on all Donaldson DT filters. Donaldson "high collapse" filters, with their steel end caps and wire-backed media, are rated to withstand up to 3000 psi/ 20,700 kPa before collapsing. High collapse designs are also potted into machined aluminum endcaps for greater filter integrity in critical applications. The fluorocarbon seal/high collapse filters also use epoxy potting and media seam seals for added chemical compatibility. High collapse designs are double wire-backed using stainless steel mesh. High collapse designs are double wire-backed using stainless steel mesh. High collapse designs are also potted into machined aluminum endcaps for greater filter integrity in critical applications.



HPK04 Components

High-Performance DT Filter Choices

Media Type	$\beta_{x(c)} = 1000$	$\beta_{x(c)} = 2$	Length		Part No.	Comments
	Rating based on ISO 16889		in	mm		
DT Synthetic	<4 μm		8.22	209	P566209	DT-9600-8-2UM
	5 μm		8.22	209	P566210	DT-9600-8-5UM
	8 μm		8.22	209	P566211	DT-9600-8-8UM
	5 μm		8.20	208	P167185	DT-9601-8-5UM, High Collapse
	12 μm		8.22	209	P566212	DT-9600-8-14UM
	12 μm		8.20	208	P167186	DT-9601-13-14UM, High Collapse
	23 μm		8.22	209	P566213	DT-9600-8-25UM
	<4 μm		12.91	328	P566214	DT-9600-13-2UM
	5 μm		12.91	328	P566215	DT-9600-13-5UM
	5 μm		12.88	327	P167411	DT-9601-8-14UM, High Collapse
	8 μm		12.91	328	P566216	DT-9600-13-8UM
	12 μm		12.91	328	P566217	DT-9600-13-14UM
	12 μm		12.88	327	P167412	DT-9601-16-5UM, High Collapse
	23 μm		12.91	328	P566218	DT-9600-13-25UM
	<4 μm		16.84	428	P566219	DT-9600-16-2UM
	5 μm		16.84	428	P566220	DT-9600-16-5UM
	5 μm		16.83	427	P167187	DT-9601-13-5UM, High Collapse
	8 μm		16.84	428	P566221	DT-9600-16-8UM
	12 μm		16.84	428	P566222	DT-9600-16-14UM
	12 μm		16.83	427	P167188	DT-9601-16-14UM, High Collapse
23 μm		16.84	428	P566223	DT-9600-16-25UM	
Water Absorbing		10 μm	8.20	208	P569528	9600 Series, Absorbs 180 ml water @ 25 psid
		10 μm	12.93	328	P569529	9600 Series, Absorbs 220 ml water @ 25 psid
		10 μm	16.83	427	P569530	9600 Series, Absorbs 300 ml water @ 25 psid
Wire Mesh		75 μm	8.20	208	P162233	9600 Series, Nitrile



Filter Notes: All Donaldson DT filters utilize glass fiber media with an epoxy-based resin system for the ultimate in chemical compatibility. All Donaldson DT filters are potted with epoxy-based adhesives. Standard collapse DT designs are double wire-backed using epoxy-coated steel mesh for maximum pleat support and dirt capacity. Fluorocarbon seals are standard on all Donaldson DT filters. High collapse designs are double wire-backed using stainless steel mesh. High collapse designs are also potted into machined aluminum endcaps for greater filter integrity in critical applications. Filters with seals made of fluorocarbon are required when using diester, phosphate ester fluids, water glycol, water/oil emulsions, and HWCF (high water content fluids) over 150°F/83°C. The fluorocarbon seal, high collapse filters also use epoxy potting and media seam seals for added chemical compatibility. Donaldson high collapse filters are physically designed to withstand up to 3000 psi/ 20,700 kPa before collapsing.