

Spin-On Filter Heads ■ SSF-20L



Technical Data

Construction

- In-line Spin-On filter head

Material

- Aluminium

Port Connections

- BSP

Flow Rate

- 225 l/min / 60 US GPM for Return-Line application
- 46 l/min / 12 US GPM for Suction-Line application

Operating Pressure

- Max. 12 bar / 174 PSI
- Max. 5 bar / 72.5 PSI differential pressure (for any application without bypass valve)

Temperature Range

- -30 °C ... +100 °C / -22 °F ... +212 °F

Media Compatibility

- Mineral oils, other fluids on request

Options and Accessories



Filter Elements

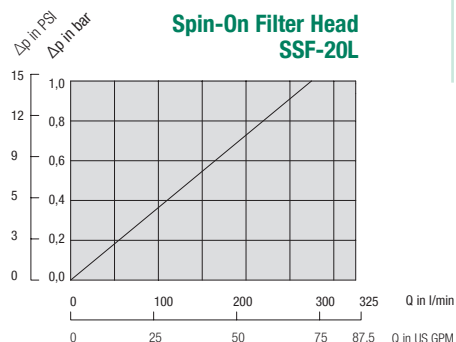
- For use with SF-67 and SFC-57/58 series elements
- For element types with seal contour type A and B
- For element types and flow characteristics see page 176 for SF-67 and page 174 for SFC-57/58.
- The element is not part of the scope of delivery

Valve

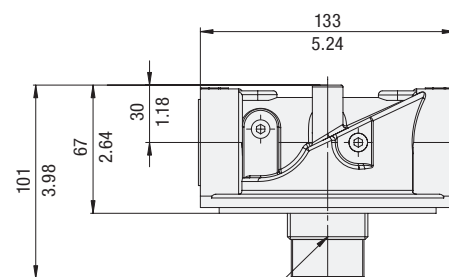
- Bypass valve (integrated in the filter head): Optional

Clogging Indicators

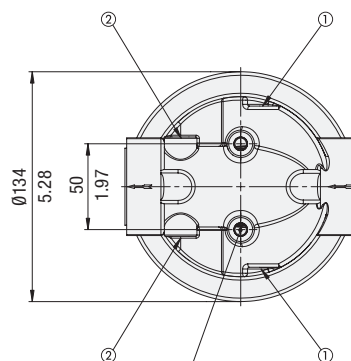
- For clogging indicator types see page 177



Dimensions



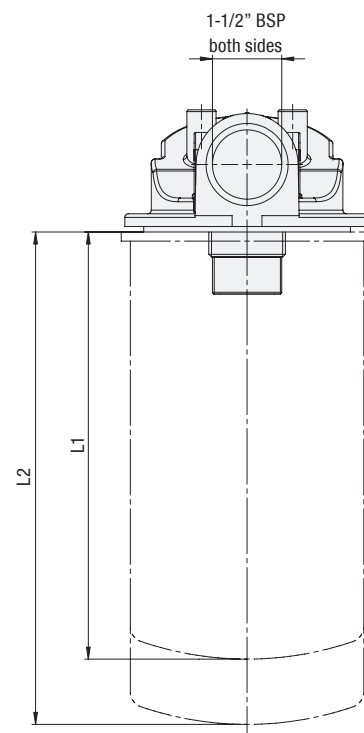
Dual spigot
G1-1/4 and 1-1/2-16 UN



Mounting holes (2x)
M8 (19.1 / .75 deep)

Clearance for element removal: 40 / 1.58

Clogging Indicator Ports: G1/8
Pos. 1 for Return-Line application
Pos. 2 for Suction-Line application



Element length L	L	ØD
L1 SFC-57	177	127
L2 SFC-58	226	127
L1 SF-67 short element	168	128
L2 SF-67 long element	270	128
	10.60	5.10

Dimensions in mm / in

Order Code

SSF - 20L - B1.7 - 4 / X

① ② ③ ④ ⑤

① Type

Spin-On Filter Head **SSF**

② Connection Style

Connection	Thread	Code
BSP	1-1/4	20L

③ Bypass Options

No bypass	0
0,2 bar / 3 PSI	B0.2
1,7 bar / 25 PSI	B1.7

Note: Other settings available on request.

④ Clogging Indicator Port Options

All clogging indicator ports drilled	4
Special	9

Note: Standard clogging indicator port for is G1/8.

⑤ Design Code

Only for information	X
----------------------	----------

