

Masflo

WASTE WATER PUMPS

SVX, SDW & SSEG Series



INTERNATIONAL PUMPING SYSTEM

118 Avenue de Stalingrad - 92700 Colombes - France
Tel : +334 91 92 01 18 - Fax : +334 91 98 11 30
Web : www.masflo.fr - Contact : info@masflo.fr

CONTENT	PAGE
CONTENT PAGE	
MASFLO WASTE WATER PUMPS	
Introduction (SVX,SDW & SSEG SERIES).....	1
SVX SERIES	
Introduction.....	2
Performance Range.....	2
Application & Application Data.....	2
Type Key.....	2
Table of Material.....	2
Hydraulic Performance Data -50Hz.....	3
Outline Diagram.....	4
Dimension & Weight -50Hz.....	4
Exploded View of SVX.....	5
Sectional View of SVX.....	6
Parts List of SVX.....	7
SDW SERIES	
Introduction.....	8
Performance Range	8
Application & Application Data.....	8
Type Key.....	8
Table of Material.....	8
Hydraulic performance data-50Hz.....	9
Outline Diagram.....	10
Dimension & weight -50Hz.....	10
Section view of SDW 50-10-10-0.75.....	11
Part list of SDW 50-10-10-0.75.....	12
Section view of SDW 1.5 to 5.5 kW.....	13
Part list of SDW 1.5 to 5.5 kW.....	14
Section view of SDW 150-150-10-7.5.....	15
Part list of SDW 150-150-10-7.5.....	16
SSEG SERIES	
Introduction.....	17
Performance Range.....	17
Application & Application Data.....	17
Type Key.....	17
Table of Material.....	17
Hydraulic Performance data-50Hz.....	18
Outline Diagram.....	19
dimension & weight.....	19
Exploded View of SSEG.....	20
Section View of SSEG.....	21
Part list of SSEG.....	22

WASTE WATER PUMPS INTRODUCTION (SVX, SDW & SSEG SERIES)

TOUGH, RELIABLE PUMPS FOR WASTE WATER AND SEWAGE TRANSFERS

In areas with no sewer systems, or areas where gravitation systems are unsuitable, pressurized systems are the perfect choice for transfer of effluent and domestic sewage to the public sewer or sewage treatment plant. In Order to meet hygiene standards and prevent noxious odours, Masflo pumps offers the perfect pumping solution at minimal investment costs.

SSEG Series

SSEG series available with unique grinder system at inlet of pump. Ensure optimum performance at all time. A newly design developed mechanical shaft seal together With fully insulated cable connection chamber prevent liquid from penetrating into the motor. High discharge pressure enable transfer of sewage over longer distance.



SSEG

SVX

SDW



KEY BENEFITS

- High Performance and highly efficient
- Improved discharge pressure
- Seal by two Mechanical Seals
- Easy Installation via suspension unit or pump base

SVX Series

SVX Series is available with Vortex impellers that is virtually impossible to clog, Vortex impeller creates liquid vortex in the volute, which directs all spherical solids, slurry, sludge, grit, and stringy or fibrous material through the pump without clogging.

SDW Series

SDW Series is available with Non-clogging double vane impeller can pump large solid. It consists of oil-filled motor keeps the windings cool, eliminates moisture, and permanently lubricates the bearings, to provide reliable pumping service.

The dual seal design gives the pump exceptionally long pump service life by keeping pumped media out of the motor housing.

WASTE WATER PUMPS SVX SERIES

INTRODUCTION

The pump in the SVX series are constructed in 100% AISI 304 stainless steel body with cast iron delivery casing. They operate entirely immersed in the pumped liquid which serves to cool the motor from the exterior. Design with vortex impeller and automatic version equipped with float switch

MOTOR

- Dry motor
- Protection Rating IP 68
- Insulation class F
- Single face power supply with permanent activated capacitor and thermal cutout protection incorporated in the motor winding
- Fully insulated cable connection chamber

PERFORMANCE RANGE

- Flow rate up to 333 l/min (20 m³/h)
- Head up to 15 m

APPLICATIONS

- All application for lifting and draining waste water with suspended solids bodies up to Ø 50 mm.
- Lifting stations with one or more pumps for agriculture and civil complexes .

APPLICATION DATA

- Type of Liquid : Waste and sewage water with solid bodies
- Maximum liquid temperature : +40° C
- Maximum immersion depth : 5 m
- Free Transit of solid bodies :
35 mm, 50 mm
up to Ø 35 mm for SVX 10-15/35
up to Ø 50 mm for SVX 10-15/50
- Minimum drainage level :
290 mm; [SVX 10-15/35]
320mm [SVX 10-15/50]

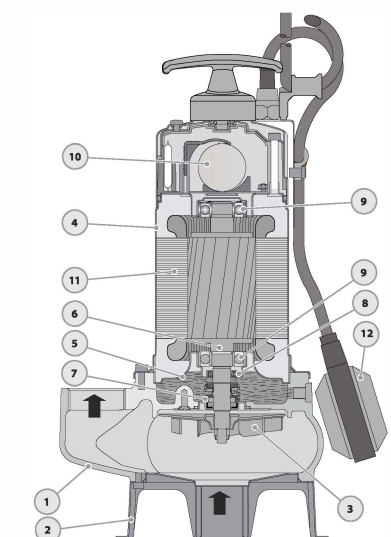


TYPE KEY



TABLE OF MATERIAL

COMPONENT		MATERIAL
1	Pump Body	Cast Iron, FG 260
2	Pump Base	Stainless Steel AISI 304
3	Impeller	Stainless Steel AISI 304
4	Motor Body	Stainless Steel AISI 304
5	Lower Bearing Housing	Stainless Steel AISI 304
6	Motor Shaft	Stainless Steel
7	Mechanical gasket	Ceramic
	Counter Face	Silicon Carbide
	Secondary Seal	Rubber NBR
8	Oil Seal	NBR
9	Bearing	6203 ZZ
10	Capacitor	25µF 440 VL (1PH Motor)
11	Motor	-
12	Float Switch	Only for Single Phase Version

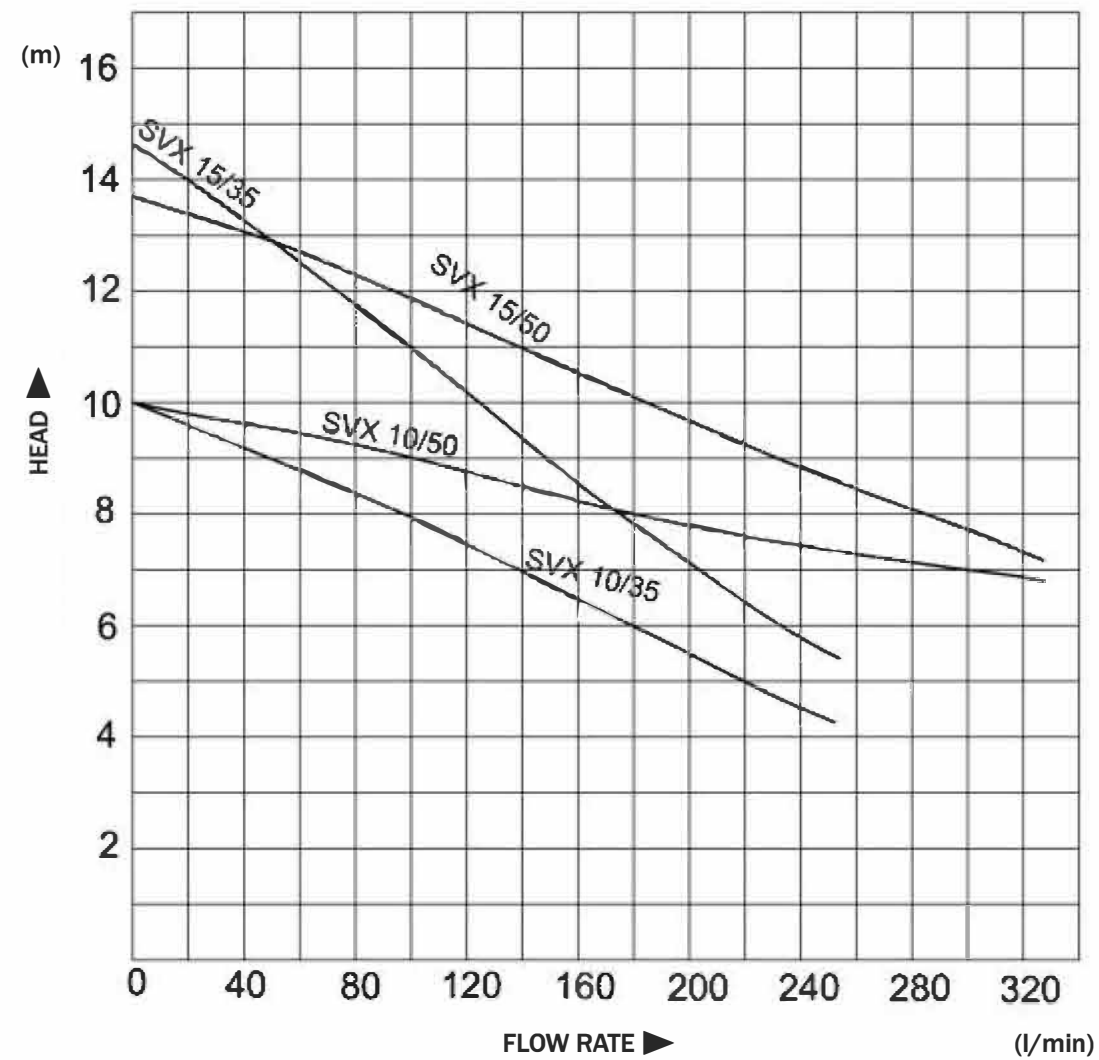


WASTE WATER PUMPS SVX SERIES

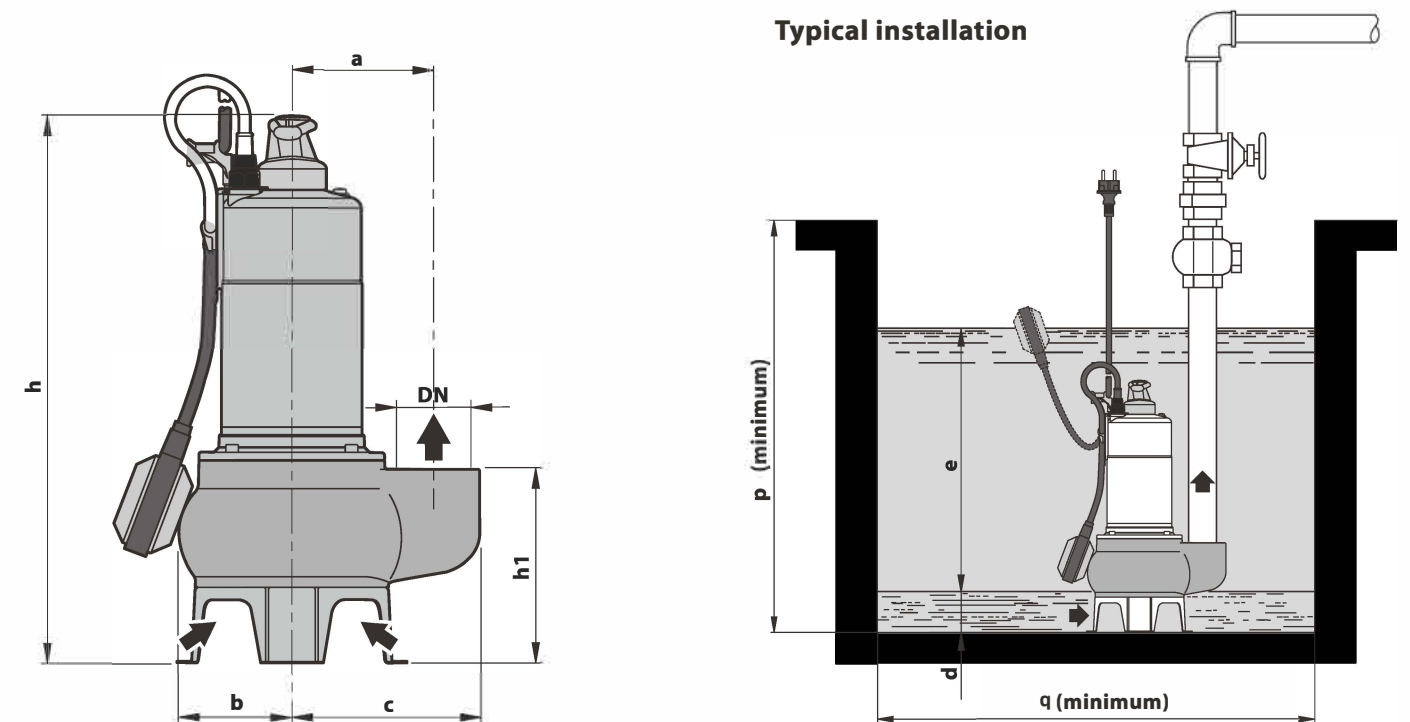
WASTE WATER PUMPS SVX SERIES

HYDRAULIC PERFORMANCE

50 Hz



OUTLINE DIAGRAM



PERFORMANCE DATA

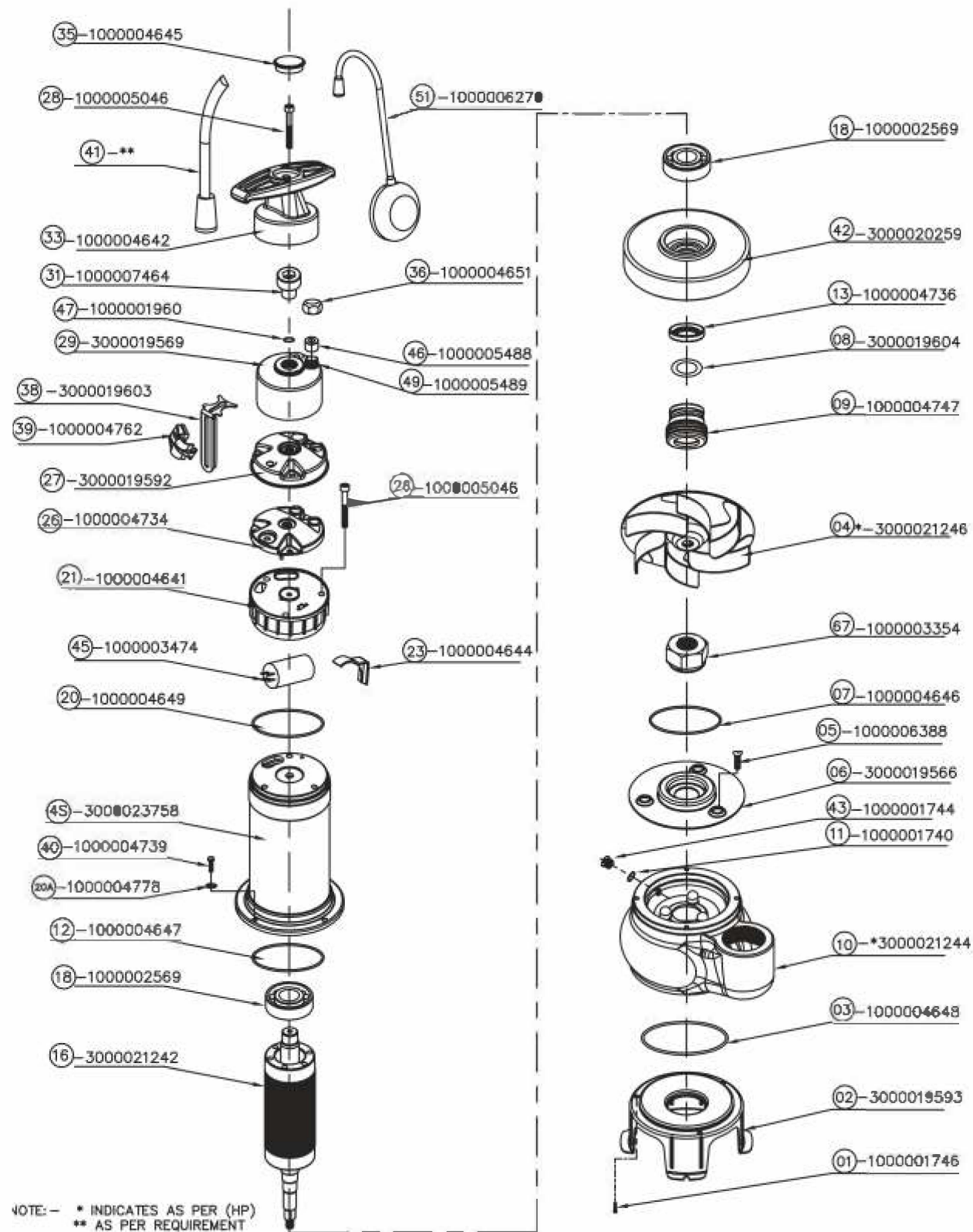
MODEL		POWER		Q	m3/hr l/min	0	3	6	9	12	15	18	20
Single-phase	Three phase	kw	HP										
SVX 10/35	SVX 10/35	0.75	1	H meter	0	50	100	150	200	250	300	333.3	
SVX 15/35	SVX 15/35	1.1	1.5		10	9	8	6.5	5.5	4.5			
SVX 10/50	SVX 10/50	0.75	1		14.5	13	11	9	7.2	5.5			
SVX 15/50	SVX 15/50	1.1	1.5		10	9.5	9	8.5	7.8	7.5	7	6.8	
					13.5	12.8	11.8	10.8	9.7	8.5	7.8	7.2	

DIMENSION AND WEIGHT

MODEL		PORT DN	SOLIDS PASSAGE	DIMENSIONS (mm)										N.W. KG	
Single-phase	Three-phase			a	b	c	h	h1	d	e	p	q	1Ø	3Ø	
SVX 10/35	SVX 10/35	RP 1½"	Ø 35 mm	105	92	140	470	131	74	variable	500	500	16.6	15.2	
SVX 15/35	SVX 15/35			149		475	136	15.6					15		
SVX 10/50	SVX 10/50	RP 2"	Ø 50 mm	110	97	150	495	156	75	variable	500	500	16.9	16.9	
SVX 15/50	SVX 15/50			115		157	500	163					76	16.7	16.5

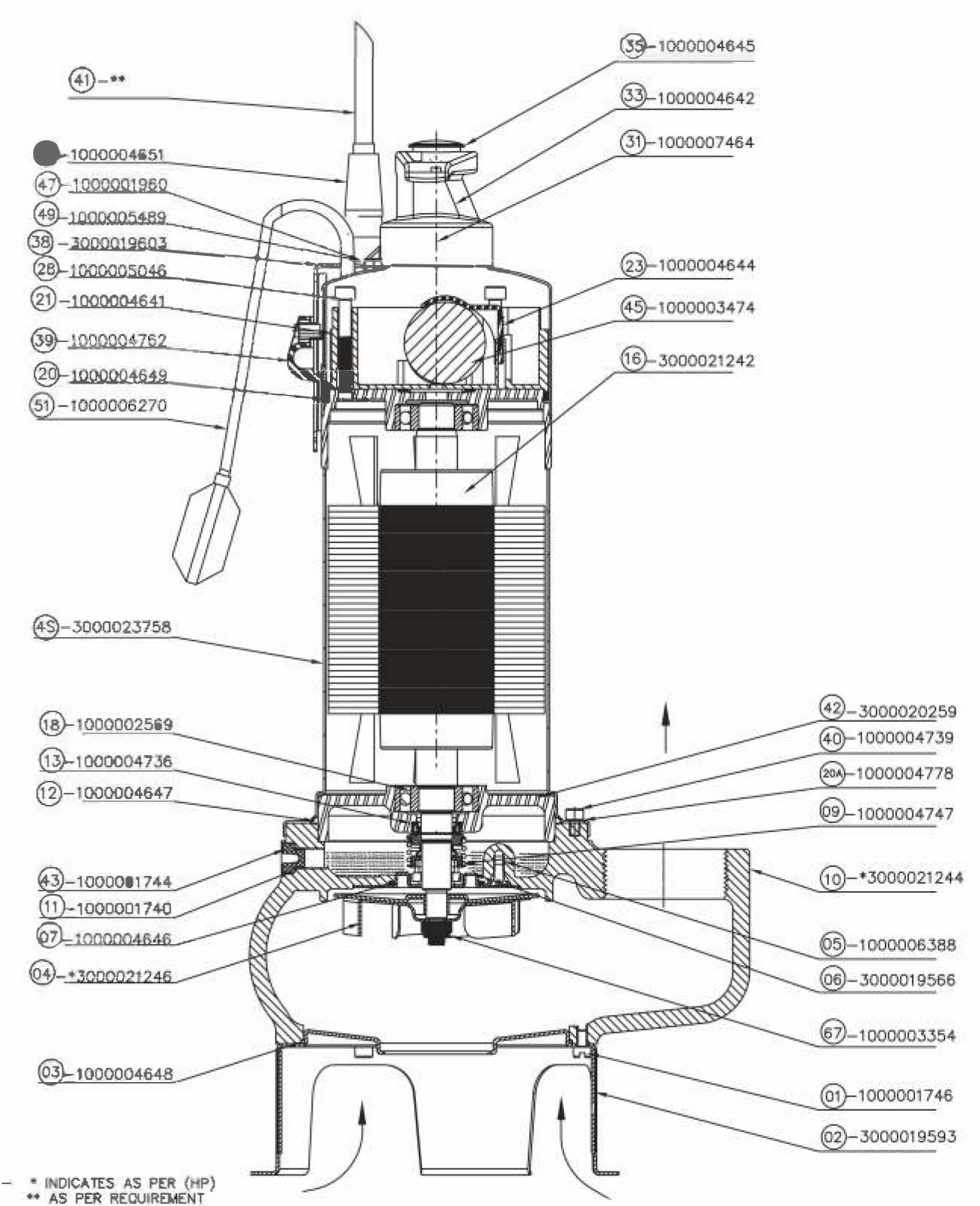
WASTE WATER PUMPS SVX SERIES

EXPLODED VIEW OF SVX



WASTE WATER PUMPS SVX SERIES

SECTIONAL VIEW OF SVX



**WASTE WATER PUMPS
SVX SERIES**

PARTS LIST OF SVX

GROUP	POS	MATERIAL	PART DESCRIPTION	QTY	MATERIAL
5S - 3000019671	47	100001960	O-RING(ID 8X2.4)	3	NBR
	11	1000001740	O RING (ID 9x 1.7)	1	NBR
	28	1000005046	ALLEN BOLT M6X50 HALF THREAD	4	AISI SS 304
	01	1000001746	PAN HEAD SCREW M4x8	3	AISI SS 304
	40	1000004739	ALLEN BOLT M6X10	4	AISI SS 304
	20A	1000004778	SPRING WASHER M6	4	AISI SS 304
	67	1000003354	NYLOCK NUT M8	1	AISI SS 304
	05	1000006388	CSK SCREW M5x10	3	AISI SS 304
	08	3000019604	WASHER FOR MECH SEAL	1	AISI SS 304
	09	1000004747	SHAFT SEAL	1	SIC/CERAMIC
	12	1000004647	O RING (0112x3.5)	1	NBR
	20	1000004649	O RING (0100x3.5)	1	NBR
	43	1000001744	DRAIN PLUG M10x1.5P	1	LTB-2
07	1000004646	O RING (040x3)	1	NBR	
31	1000007464	ALLEN BOLT M10X10	1	AISI SS 304	
13	1000004736	OIL SEAL 16x24x5	1	NBR	
	02	3000019593	PUMP BASE SVX	1	AISI SS 304
	06	3000019566	SEAL MOUNTING PLATE	1	AISI SS 304
	03	1000004648	O RING (0127 x TH 1.8)	1	NBR
	10	*1000002584	PUMP HOUSING	1	CI FG 260
	04	*3000021246	IMPELLER ASSLY	1	AISI SS 304
	26	1000004734	TOP COVER	1	PP
	42	3000020259	BEARING HOUSING LOWER	1	AISI SS 304
	18	1000002569	BALL BEARING 6203 2ZZ	2	-
	16	3000021242	ROTOR SUB ASSY	1	-
		3000023758	STATOR SUB ASLY SVX	1	-
4s	41	**	CABLE	10 m	-
	36	1000004651	NUT FOR CABLE	2	AISI SS 304
	49	1000005489	CABLE SLEEVE SVX	2	AISI SS 304
	46	1000005488	GROMATE	2	NBR
	21	1000004641	CAPACITOR HOLDING CUP	1	PP
	26	1000004734	TOP COVER SVX PBT	1	PP
	27	3000019592	TOP COVER SVX SS	1	AISI SS 304
	29	3000019569	MOTOR UPPER BODY SVX	1	AISI SS 304
	45	1000003474	CAPACITOR 25 fÊF	1	-
	23	1000004644	CAPACITOR PLUG	1	PP
	51	1000006270	FLOAT SWITCH	1	-
	38	3000019603	FLOAT SWITCH MOUNTING BRACKET	1	AISI SS 304
	39	1000004762	HOOK SVX	1	PP
	33	1000004642	HANDLE FOR PUMP SVX	1	PP
	35	1000004645	CAP FOR HANDLE SVX	1	PP

**WASTE WATER PUMPS
SDW SERIES**

INTRODUCTION

SDW series submersible sewage pump is mainly used for municipal works, industrial buildings, hotels, hospitals, civil air defense, mines etc. Trades to drain off the sewage, waste water, rainwater and living water in cities containing Solid grains and various long fabrics.

APPLICATION DATA

- Type of Liquid : Waste and sewage water with solid bodies
- Maximum liquid temperature : +40 °C
- Maximum immersion depth : 5 m
- Free Transit of solid bodies : upto 45mm;
- pH value limit : 7-9

MOTOR

- Protection Rating IP 68
- Insulation class F
- Fully insulated cable connection chamber
- Rotation Speed 2850 RPM (In 7.5 kW-1450 RPM)

PERFORMANCE RANGE

Flow rate upto 2716.6 L/min. (163 M3/h)
Head upto 31m

TABLE OF MATERIAL

Sn. No.	Component	Material
1	Base	CAST IRON
2	Impeller	CAST IRON
3	Pump Body	CAST IRON
4	Skeleton Seal	NBR
5	Mechanical Seal	—
6	Oil Cylinder	CAST IRON
7	Bearing	—
8	Motor Housing	CAST IRON
9	Bearing	—
10	Up Bearing Pedestal	CAST IRON
11	Top Cap	CAST IRON
12	Gas Testing Hole	—
13	Handle/Ring	CAST IRON/STAINLESS STEEL
14	Cable	—
15	Connection Box	—
16	O-Ring	NBR
17	Rotor	—
18	Stator	—
19	O-Ring	NBR
20	Oil Room	—
21	Oil Hole	—
22	O-Ring	NBR
23	Elbow Outlet	CAST IRON
24	O-Ring	NBR

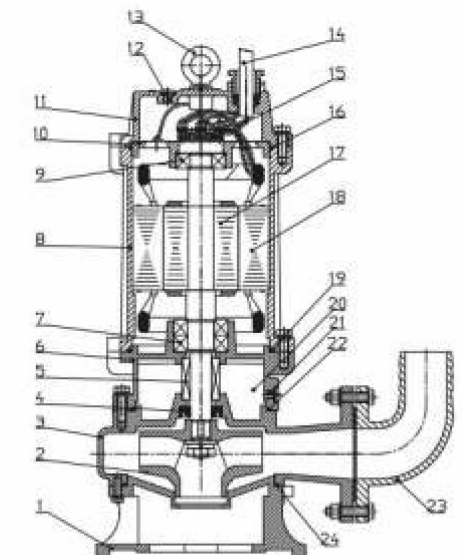
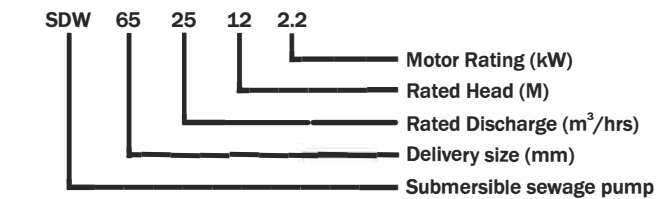
APPLICATIONS

- Waste water drainage in factories, Construction Sites and Commercial Facilities
- Drainage system in municipal sewage treatment plant
- Industrial Sewage and Effluent treatment Plants
- Municipal Projects
- Residential and building projects

FEATURES

- High efficiency motor: Specially designed submersible motor with IP68 Protection and F Class Insulation
- Anti-Rust Corrosive motor housing
- Non -clogging, minimized abrasive wear
- Superior back to back double mechanical seal

TYPE KEY

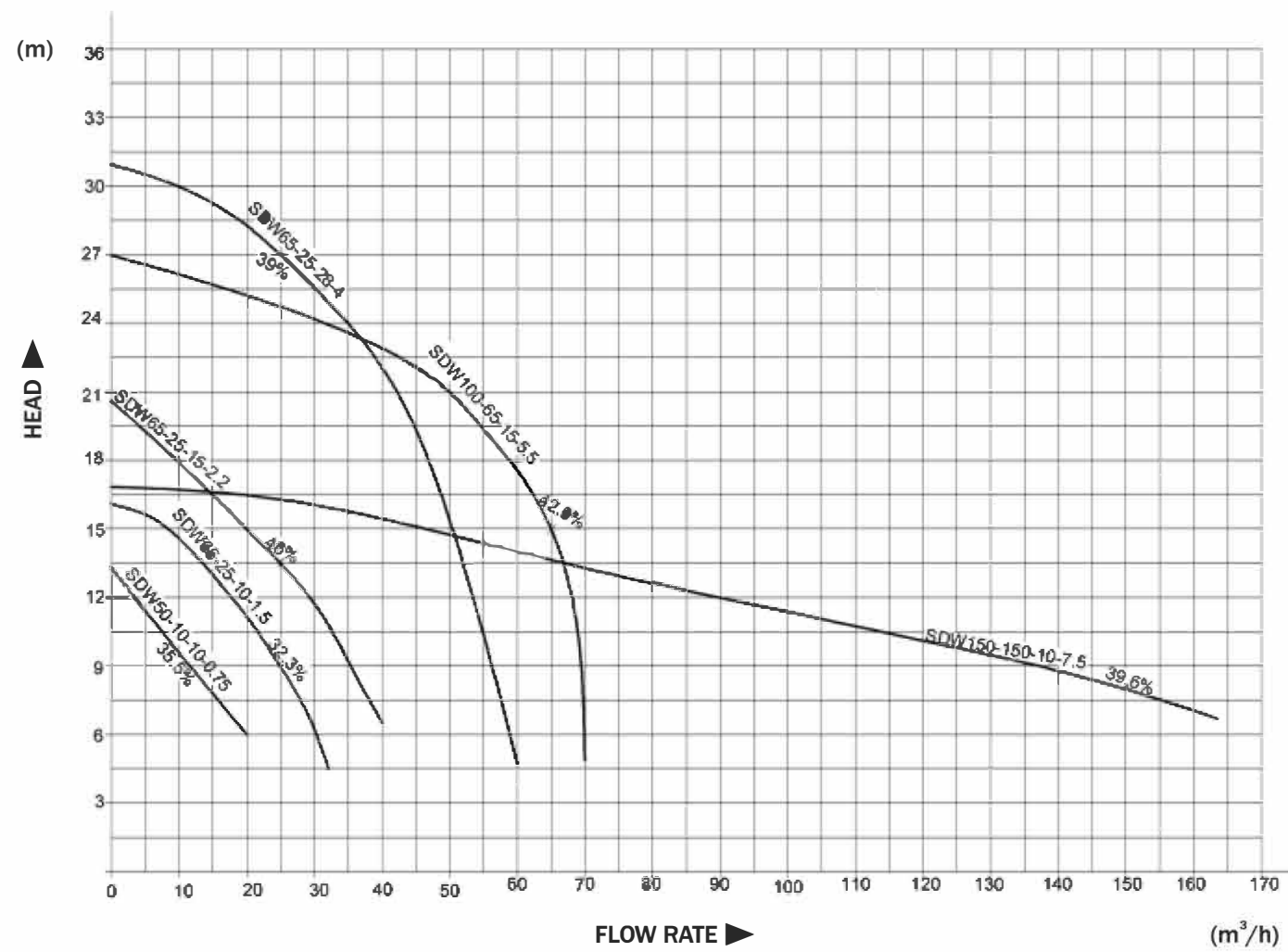


WASTE WATER PUMPS SDW SERIES

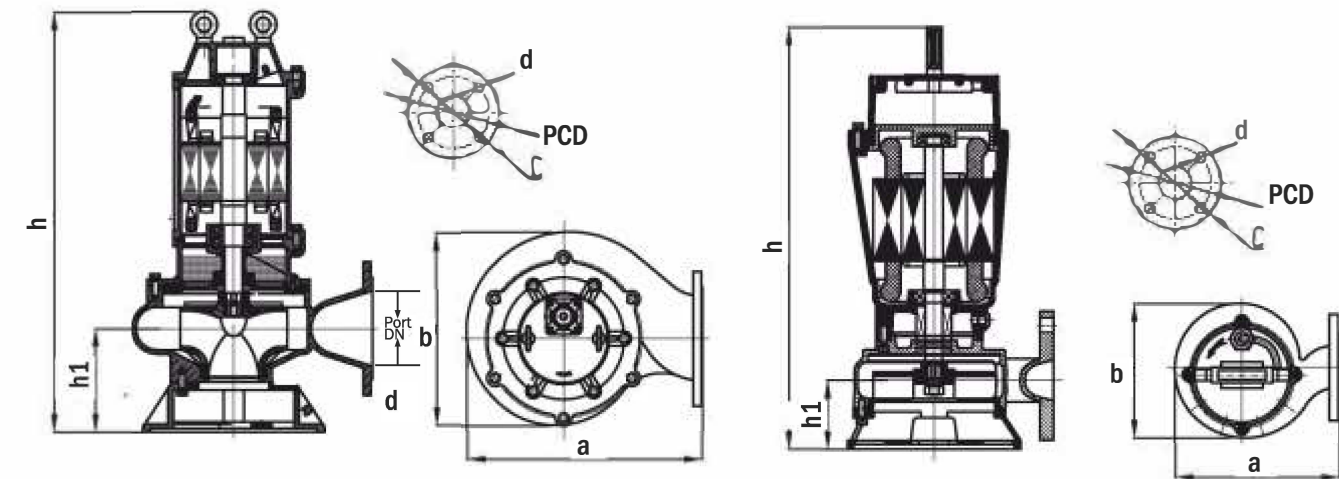
WASTE WATER PUMPS SDW SERIES

HYDRAULIC PERFORMANCE

50 Hz



OUTLINE DIAGRAM



DIMENSIONS & WEIGHT

MODEL Three Phase	PORT DN	SOLID SIZE	DIMENSIONS (mm)							WEIGHT Kg
			a	b	h	h1	d	PCD	dia. of flange (C)	
SDW50-10-10-0.75KW-380V	50	20	200	175	420	70	14	110	140	19
SDW65-25-10-1.5KW-380V	65	25	255	200	495	110	14	130	160	26
SDW65-25-15-2.2KW-380V	65	25	245	200	540	110	14	130	160	31
SDW65-25-28-4KW-380V	65	25	330	260	680	165	14	130	160	61
SDW100-65-15-5.5KW-380V	100	30	305	260	680	145	18	170	210	68
SDW150-150-10-7.5KW-380V	150	45	460	350	860	200	18	225	265	163

PERFORMANCE DATA

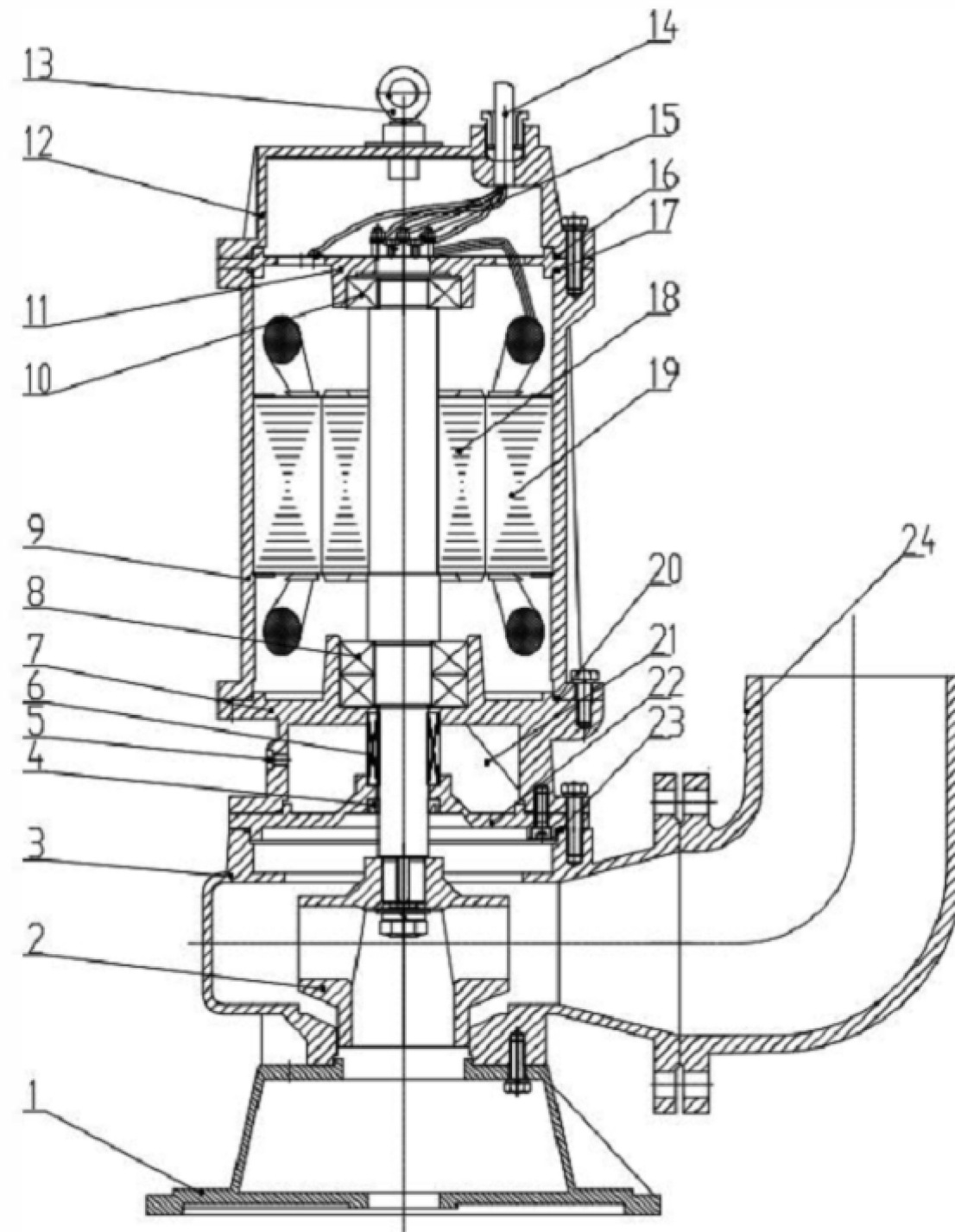
MODEL	POWER kw	HP	Q	Flow Rate (m³/hr)																
				10	20	30	40	50	60	70	80	90	100	110	120	130	140	150	160	
Three phase				166.6	333.33	500	666.66	833.33	1000	1166.7	1333.33	1500	1166.66	1833.33	2000	2166.66	2333.33	2500	2666.66	
SDW50-10-10-0.75	0.75	1	H meter	9.5	6															
SDW65-25-10-1.5	1.5	2		14.7	11	6.2														
SDW65-25-15-2.2	2.2	3		17.8	15	11.8	6.5													
SDW65-25-28-4.0	4	5.5		31	28	25.5	22	15.2	4.7											
SDW100-65-15-5.5	5.5	7.5		26	25	24.2	23	21	17.5	5										
SDW150-150-10-7.5	7.5	10		16.7	16.5	16	15.2	14.8	14	13	12.5	12	11.5	10.7	10.2	9.5	8.7	8	7	

WASTE WATER PUMPS SDW SERIES

WASTE WATER PUMPS SDW SERIES

SECTIONAL VIEW OF SDW 50-10-10-0.75

PART LIST of SDW 50-10-10-0.75

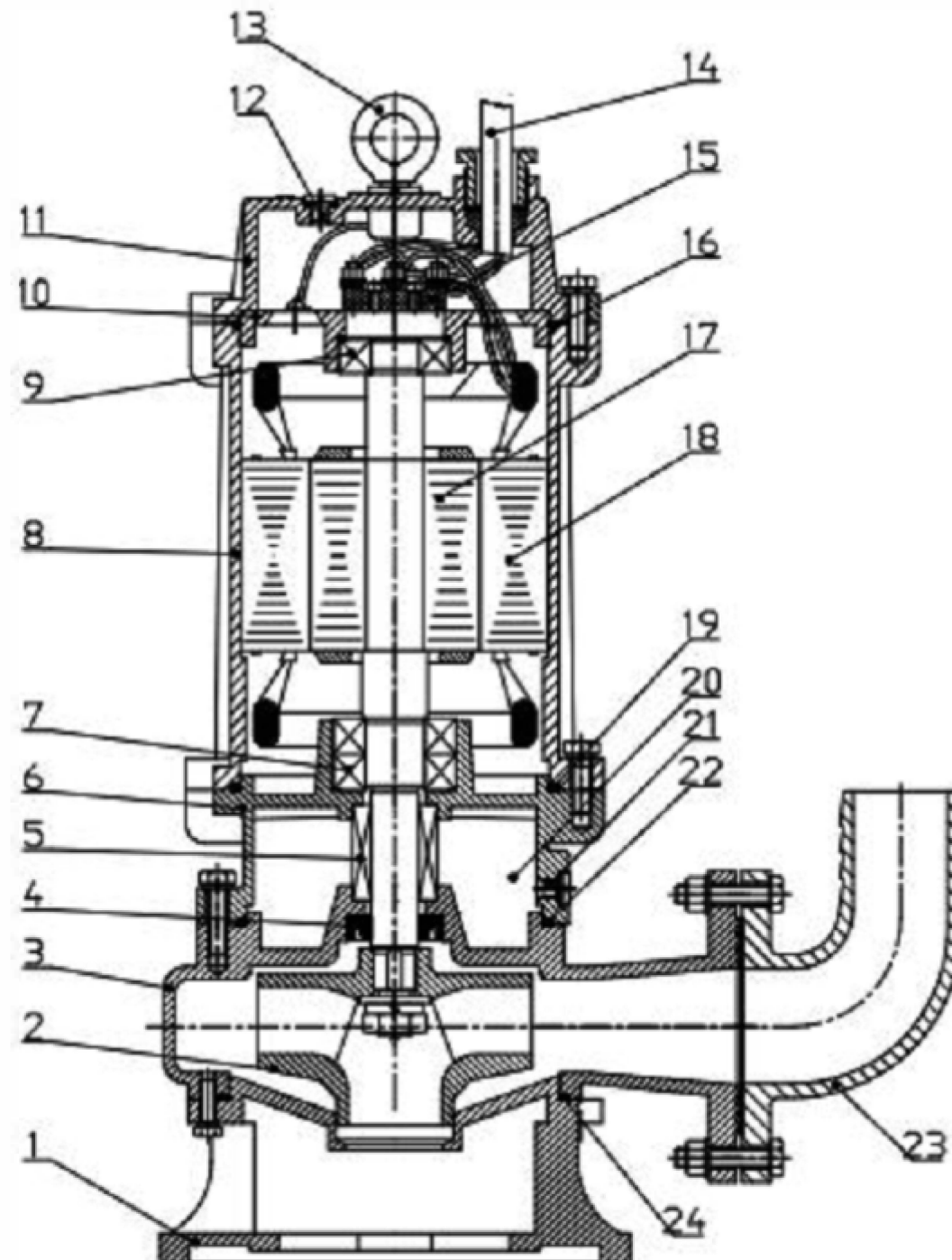


POS	PART DESCRIPTION	MATERIAL	QTY
1	BASE	CAST IRON	1
2	PUMP BODY	CAST IRON	1
3	IMPELLER	CAST IRON	1
4	SKELETON SEAL	NBR	1
5	DOUBLE END MECHANICAL SEAL	CERAMIC/GRAPHITE	1
6	BEARING 6202	-	1
7	MOTOR HOUSING	CAST IRON	1
8	BEARING 6203	-	1
9	UP BEARING PEDESTAL	CAST IRON	1
10	TOP CAP	CAST IRON	1
11	HANDLE	CAST IRON	1
12	CABLE	-	3*0.75 mm2
13	GAS TESTING HOLE	-	1
14	CONNECTION BOX	-	-
15	O - RING	NBR	1
16	ROTOR	-	1
17	STATOR	-	1
18	OIL CYLINDER	CAST IRON	100 ml
19	OIL HOLE	-	1
20	O - RING	NBR	1
21	ELBOW OUTLET	CAST IRON	1

WASTE WATER PUMPS SDW SERIES

WASTE WATER PUMPS SDW SERIES

SECTION VIEW OF SDW 1.5 TO 5.5

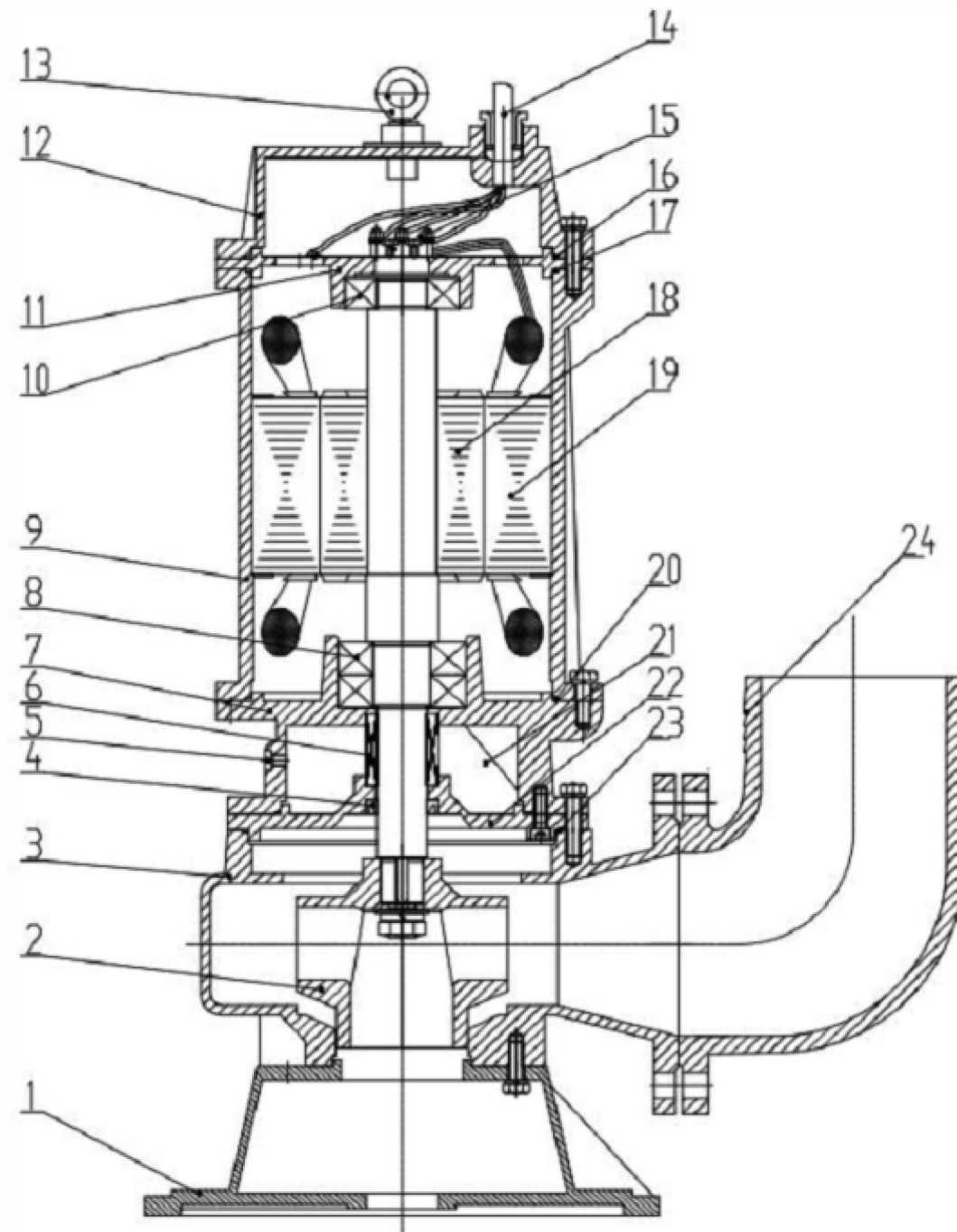


PART LIST OF SDW 1.5 TO 5.5

POS	PART DESCRIPTION	MATERIAL	QTY
1	BASE	CAST IRON	1
2	IMPELLER	CAST IRON	1
3	PUMP BODY	CAST IRON	1
4	SKELETON SEAL	NBR	1
5	DOUBLE END MECHANICAL SEAL	CARBON SILICON GRAPHITE, CERAMIC GRAPHITE	1
6	OIL CYLINDER	CAST IRON	350 ml
7	BEARING	-	2
8	MOTOR HOUSING	CAST IRON	1
9	BEARING	-	1
10	UP BEARING PEDESTAL	CAST IRON	1
11	TOP CAP	CAST IRON	1
12	GAS TESTING HOLE	-	1
13	HANDLE	STAINLESS STEEL	1
14	CABLE	-	4*1mm ²
15	CONNECTION BOX	-	-
16	O - RING	NBR	1
17	ROTOR	-	1
18	STATOR	-	1
19	O - RING	NBR	1
20	OIL ROOM	-	1
21	OIL HOLE	-	1
22	O - RING	NBR	1
23	ELBOW OUTLET	CAST IRON	1
24	O - RING	NBR	1

WASTE WATER PUMPS SDW SERIES

SECTIONAL VIEW OF SDW 150-150-10-7.5 KW



WASTE WATER PUMPS SDW SERIES

PART LIST OF SDW 150-150-10-7.5 KW

POS	PART DESCRIPTION	MATERIAL	QTY
1	BASE	CAST IRON	1
2	IMPELLER	CAST IRON	1
3	PUMP BODY	CAST IRON	1
4	SKELETON SEAL	NBR	1
5	OIL HOLE	-	1
6	DOUBLE END MECHANICAL SEAL	CORBON SILICON - GRAPHITE, CERAMIC GRAPHITE	1
7	OIL CYLINDER	CAST IRON	800 ml
8	BEARING	-	2
9	MOTOR HOUSING	CAST IRON	1
10	BEARING	-	1
11	UP BEARING PEDESTAL	CAST IRON	1
12	TOP CAP	CAST IRON	1
13	HANDLE	STAINLESS STEEL	1
14	CABLE	-	4*2 mm2
15	CONNECT ION BOX	-	-
16	GAS TEST ING HOLE	-	1
17	O - RING	NBR	1
18	ROTOR	-	1
19	STATOR	-	1
20	O - RING	NBR	1
21	OIL ROOM	-	1
22	OIL CYLINDER CAP	CAST IRON	1
23	O - RING	NBR	1
24	ELBOW OUTLET	CAST IRON	1

WASTE WATER PUMPS SSEG SERIES

INTRODUCTION

The pump in SSEG series are constructed with CI FG 260 for pump housing and stator housing. the unique clamp system made up of AISI SS 304 enable to quick and easy dismantling of pump and motor unit. With the help of unique clamp system, enable to rotate 180 degree of motor housing. the SSEG pump are suitable for pumping domestic sewage and other liquid with a PH value of 4 to 10 in permanent installation.

MOTOR

Protection rating Ip68
Insulation class F
Single phase and three phase with fully insulated cable connection chamber

APPLICATION DATA

Maximum temp. of pumping liquid = 40°
 • Maximum temp. for short period (1hr), up to 60 degree is permissible
 • Maximum submersion = 20m.
 • Voltage tolerance = -10 to +6 %

APPLICATION

• SSEG pump are used in sparsely populated area where gravity sewage system are not available.
 • For example :- small village and farm area with large difference in ground level.

TABLE OF MATERIAL

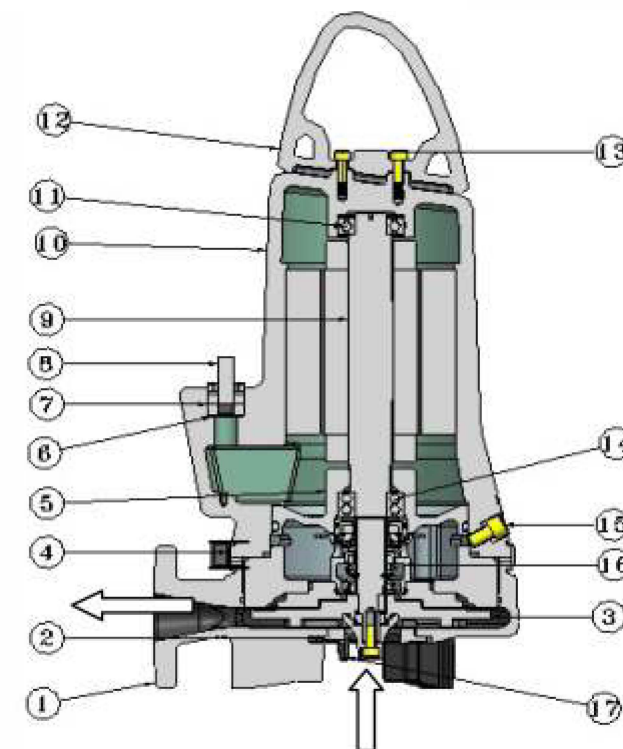
Sn. No.	Component	Material
1	Pump Housing	CI FG 260
2	Grinder Head	Hardened Stainless Steel
3	Impeller	CI FG 260
4	STRIP ASS.	AISI SS 304
5	Oil Chamber	CI FG 260
6	Washer	AISI SS 304
7	Grommet	NBR
8	Cable	-
9	Rotor Shaft	AISI SS 304
10	Stator Housing	CI FG 260
11	Bearing	-
12	Lifting Bracket	AISI SS 304
13	Hexagonal Socket Head Cup Screw	AISI SS 304
14	Bearing	-
15	Oil Cup Screw	AISI SS 304
16	Double Mechanical Cartridge Shaft Seal	SIC/SIC, Carbon/Ceramic
17	Grinding Ring Hardened	Stainless Steel

PERFORMANCE RANGE

• Flow rate up to 291 l/min
 • Head up to 45 m

TYPE KEY

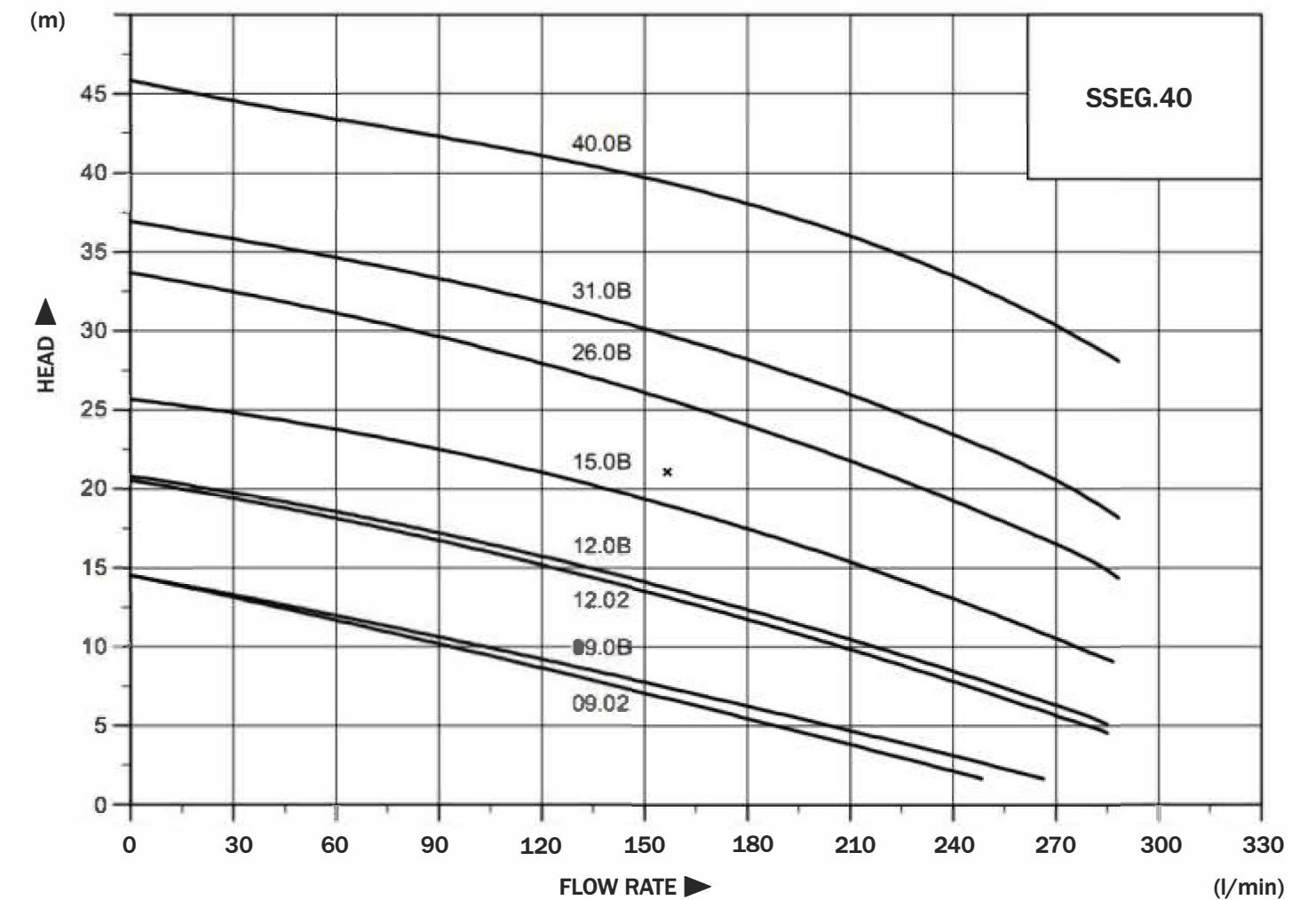
S SEG.50.25.02/0B
 3 PHASE
 1 PHASE
 POWER OUTPUT 2.5(KW)
 NOMINAL DISCHARGE PORT(MM)
 GRINDER AT INLET OF PUMP
 SEWAGE PUMP



WASTE WATER PUMPS SSEG SERIES

HYDRAULIC PERFORMANCE

50 Hz

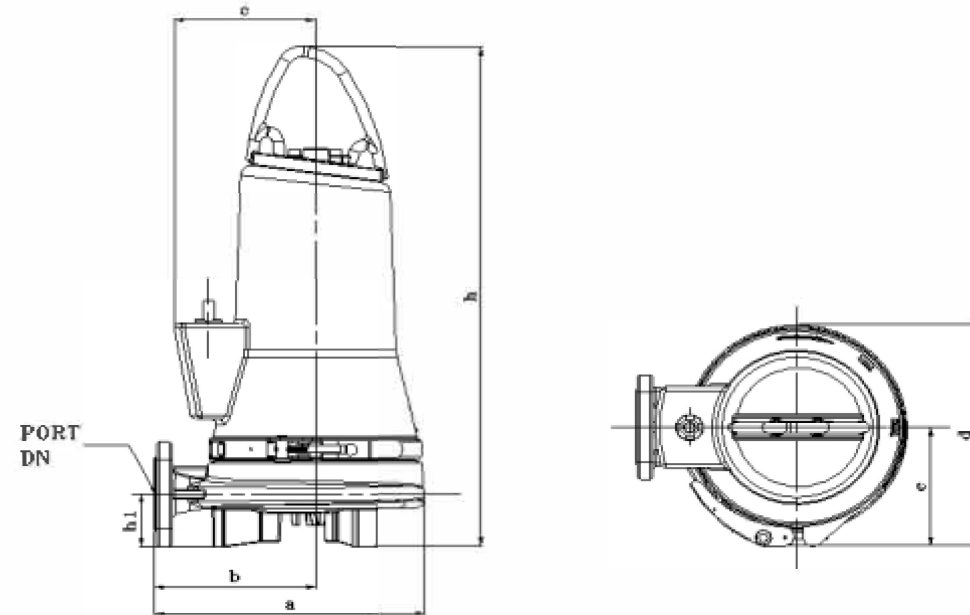


PERFORMANCE DATA

MODEL	POWER		Q	H meter													
	kw	HP		m3/hr	0	1.8	3.6	5.4	7.2	9	10.8	12.6	14.4	16.2	17.1		
Single phase				0	30	60	90	120	150	180	210	240	270	285			
SSEG.40.09.02	0.9	1.5		14.5	13	12	10	8.5	7.5	5.5	3.5	2					
SSEG.40.09.0B	0.9	1.5		14.5	13.2	12.5	10.5	9	8	6	4.8	3					
SSEG.40.12.02	1.2	2		20.8	19.5	18	17	15	13	12	9.8	7.5	5.5	4.8			
SSEG.40.12.0B	1.2	2		21	19.8	19	17.5	16	14	12.5	11	8	6.5	5			
SSEG.40.15.0B	1.5	2		25.5	25	24	22.5	21	19	17.5	15.5	13	10.5	9			
SSEG.40.26.0B	2.6	4		33	32.5	31	29.5	28	26	23	21	19	16	14			
SSEG.40.31.0B	3.1	5		37	35.5	34.5	33	32	30	28	26	23	21	18			
SSEG.40.40.0B	4	5.5		46	44.5	43	42.5	41	39.5	38	36	33	31	28			

WASTE WATER PUMPS SSEG SERIES

OUTLINE DIAGRAM

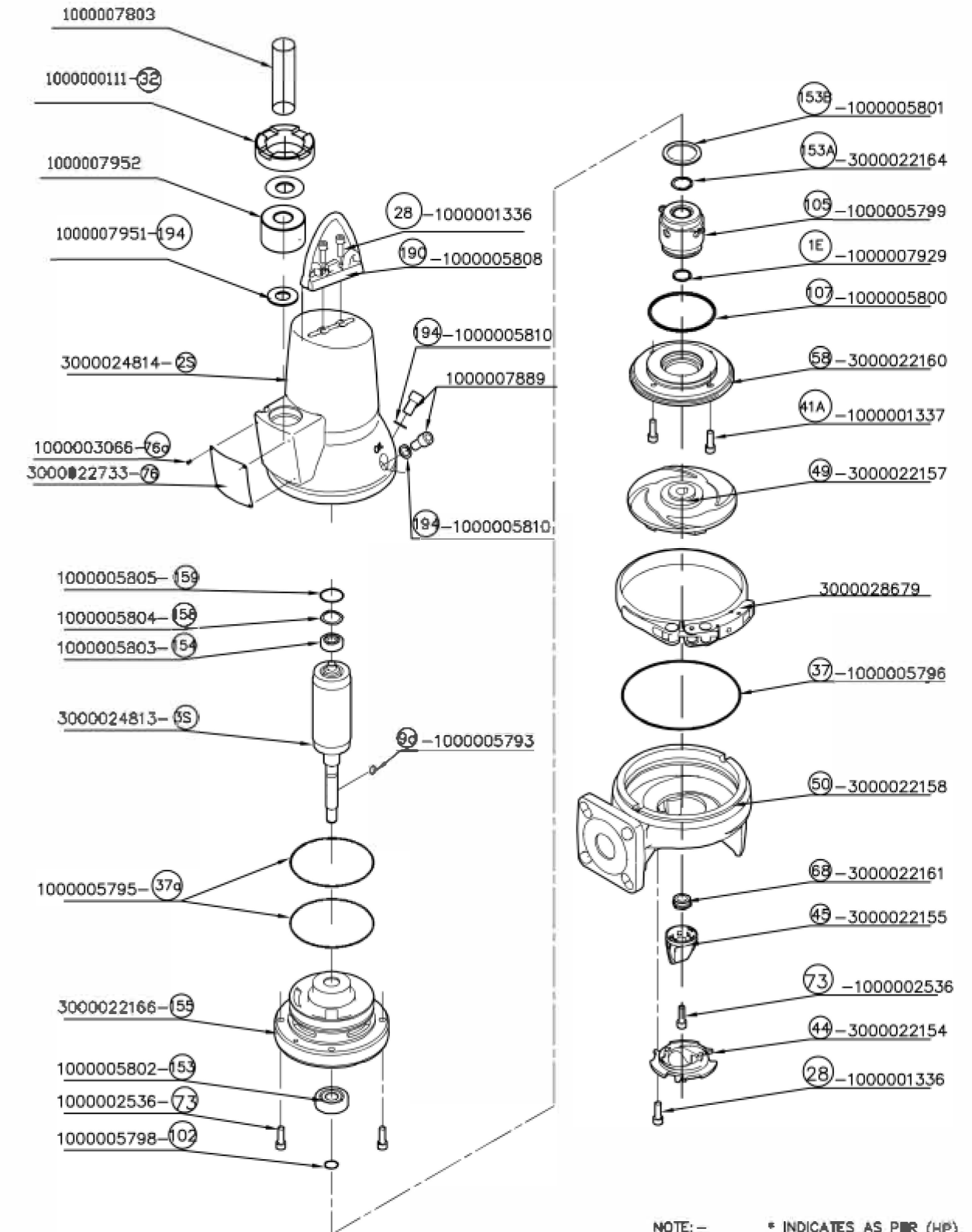


Dimensions & Weight

MODEL		DIAMENSIONS (mm)							PORT DN	W.T. (kg)	
Single phase	Three phase	h	h1	a	b	c	d	e	(mm)	1 ϕ	3 ϕ
SSEG.40.09.02	SSEG.40.09.0B	456	72	255	154	123	216	99	40	38	38
SSEG.40.12.02	SSEG.40.12.0B	456	72	255	154	123	216	99	40	38	38
	SSEG.40.15.0B	456	72	255	154	123	216	99	40		38
	SSEG.40.26.0B	527	60	292	173	143	256	119	40		57
	SSEG.40.31.0B	567	60	292	173	144	256	119	40		65
	SSEG.40.40.0B	567	60	292	173	144	256	119	40		65

WASTE WATER PUMPS SSEG SERIES

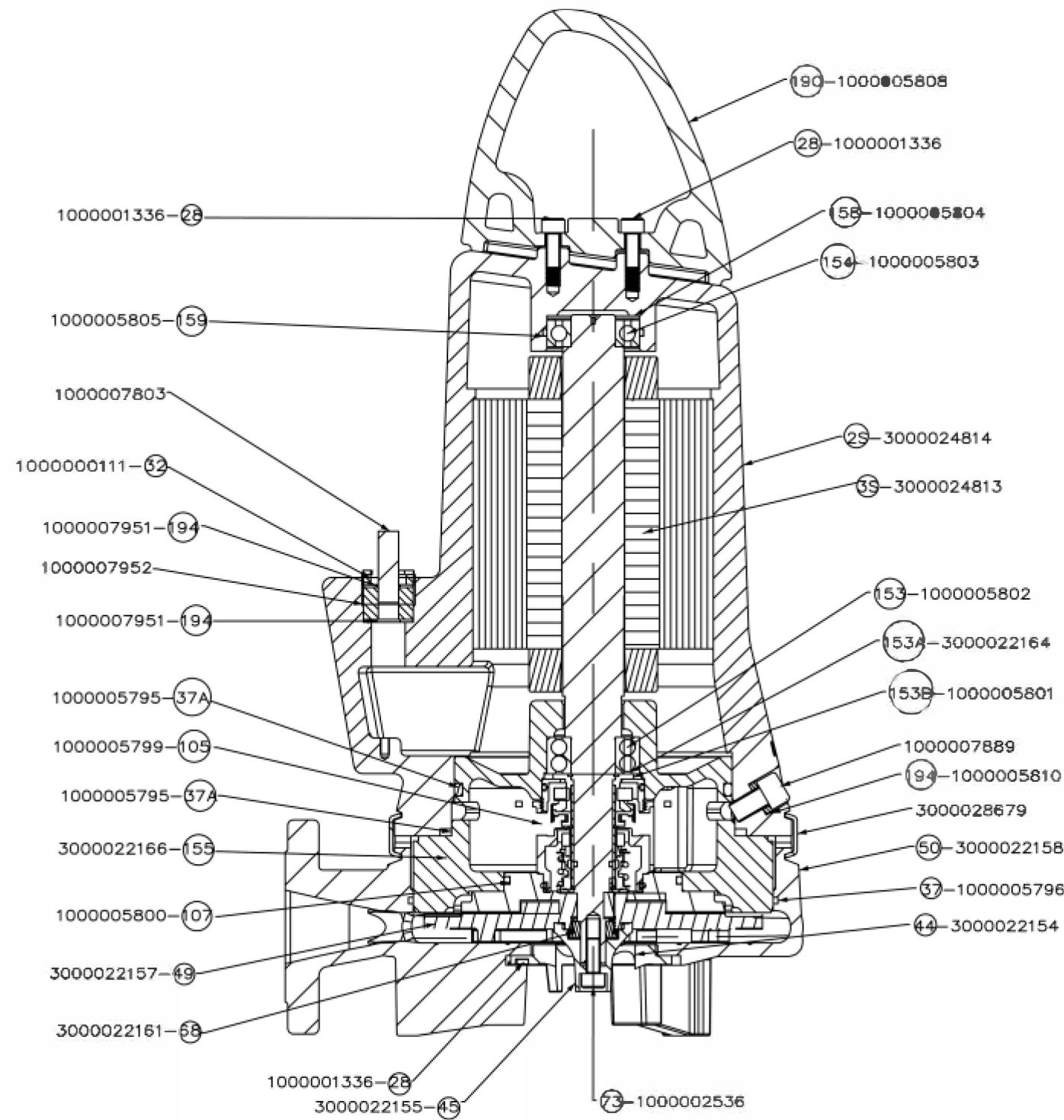
EXPLODED VIEW OF SSEG



NOTE: - * INDICATES AS PBR (HP)
** AS PER REQUIREMENT

WASTE WATER PUMPS SSEG SERIES

SECTIONAL VIEW OF SSEG



NOTE:- * INDICATES AS PER (HP)
** AS PER REQUIREMENT

WASTE WATER PUMPS SSEG SERIES

Part List Of SSEG

GROUP	POS	MATERIAL	PART DESCRIPTION	QTY	MATERIAL
	44	3000022154	GRINDER RING MC	1	HARDENED STAINLESS STEEL
	45	3000022155	GRINDER HEAD MC	1	HARDENED STAINLESS STEEL
	68	3000022161	ADJUSTMENT NUT	1	AISI SS 304
	50	3000022158	PUMP HOUSING MC	1	CI FG 260
	76	3000022733	NAME PLATE	1	AISI SS 304
		3000028679	STRIP ASS.	1	AISI SS 304
	49	3000022157	IMPELLER MC	1	CI FG 260
	58	3000022160	RETAINER FOR SEAL RING MC	1	CI FG 260
	105	1000005799	MECH. SEAL	1	SIC/SIC, Carbon/ Ceramic
	153A	3000022164	SPACER RING DIA 42X54X2.5 THK.	1	AISI SS 304
	155	3000022166	OIL CHAMBER MC	1	CI FG 260
3S		3000024813	ROTOR SUB ASSLY SSEG .40	1	-
2S		3000024814	STATOR ASS.	1	-
	28	1000001336	ALLEN BOLT M8X25	3	AISI SS 304
	190	1000005808	LIFTING BRACKET	1	AISI SS 304
		1000007889	ALLEN BOLT M12X16MM	2	AISI SS 304
		1000007803	PVC CABLE 2.5 SQMMX	6	CORE 10M NA
	32	1000000111	CONNECTOR RING SML 150	1	-
	194	1000007951	WASHER ID-13XOD 27.5XTH1.5MM	2	AISI SS 304
	9a	1000005793	KEY 6X6X14	1	AISI SS 304
		1000007952	GROMET SSEG ID11.5XOD28MMXTH 18MM	1	NBR
	37	1000005796	O-RING ID 204 X THICKNESS 3.0	1	NBR
	41A	1000001337	ALLEN BOLT M8X20	2	AISI SS 304
	107	1000005800	O-RING ID 90 X THK 4.0	1	NBR
5S	153B	1000005801	O-RING ID 17.3 X THICKNESS 2.4	1	NBR
	76A	1000003066	RIVET FOR PUMP SS 304	4	AISI SS 304
	194	1000005810	SEAL WASHER INTERNAL - OD 19 X ID 12.2 X 4.4 THK.	2	AISI SS 304
	159	1000005805	O-RING ID 52 X TH- 3.0MM	1	NBR
	158	1000005804	WAVE WASHER ID 42 x OD 51 x 0.5 THK.	1	SPRING STEEL
	154	1000005803	BALL BEARING 6205.2Z.C4.SYN	1	-
	37A	1000005795	O-RING ID 144.3 X THICKNESS 5.7	2	NBR
	73	1000002536	ALLEN BOLT M8X30	7	AISI SS 304
	153	1000005802	BALL BEARING 3205.2ZR	1	-
	1E	1000007929	CIRCLIP LIGHT A22	1	AISI SS 304
	1E	1000007928	CIRCLIP LIGHT A25	1	AISI SS 304