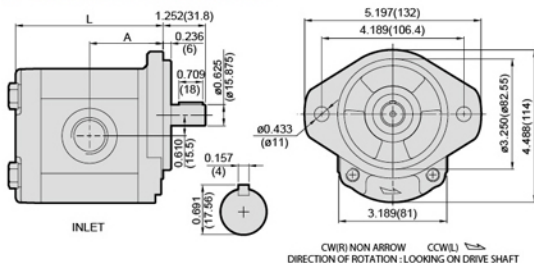




OVERALL DIMENSIONS



ORDERING EXAMPLE

For Example **2** **G** **G** **1** **U** **□** **□**
 SERIES TYPE FLANGE SHAFT PORT DISPL. ROTATION

If you need pump with displ.0.98 c.i.r and rotation is cw, the model number is : **2GG1U16R**

PERFORMANCE DATA

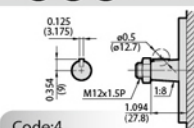
MODEL	DISPLACEMENT		PRESSURE psi(MPa)		RPM RANGE	DIMENSIONS inch (mm)		WEIGHT	
	c.i.r	cm ³ /r	CONTINUOUS	MAX.		A	L	Kg	LBS
04	0.24	4.0	3500(25)	4200(30)	600	1.658(42.1)	3.433(87.2)	3.23	7.11
05	0.30	5.0	3500(25)	4200(30)		1.687(42.9)	3.493(88.7)	3.27	7.19
06	0.38	6.2	3500(25)	4200(30)		1.717(43.6)	3.552(90.2)	3.32	7.30
07	0.43	7.0	3500(25)	4200(30)		1.746(44.4)	3.611(91.7)	3.36	7.39
08	0.52	8.4	3500(25)	4200(30)		1.796(45.6)	3.709(94.2)	3.41	7.50
09	0.58	9.5	3500(25)	4200(30)		1.825(46.4)	3.768(95.7)	3.45	7.59
11	0.69	11.3	3500(25)	4200(30)	4000	1.884(47.9)	3.886(98.7)	3.53	7.77
14	0.85	14.0	3500(25)	4200(30)		1.963(49.9)	4.044(102.7)	3.64	8.01
16	0.98	16.0	3500(25)	4200(30)		2.002(51.4)	4.162(105.7)	3.74	8.23
18	1.10	18.0	3500(25)	4200(30)		2.081(52.9)	4.280(108.7)	3.80	8.36
20	1.20	19.5	3300(23)	3800(27)		2.160(54.9)	4.437(112.7)	3.89	8.56
22	1.31	21.5	3000(21)	3500(25)		2.180(55.4)	4.477(113.7)	3.96	8.71
24	1.44	23.5	2550(18)	3100(22)	600	2.258(57.4)	4.634(117.7)	4.01	8.82
26	1.53	25.0	2550(18)	3100(22)		2.317(58.9)	4.752(120.7)	4.10	9.02
28	1.71	28.0	2300(16)	2700(19)		2.396(60.9)	4.910(124.7)	4.19	9.22
30	1.84	30.0	2100(15)	2550(18)		2.475(62.9)	5.067(128.7)	4.30	9.46
33	2.02	33.0	2000(14)	2300(16)		2.554(64.9)	5.225(132.7)	4.41	9.70
						(*12500)			

*More than 2500 qualified per applications.

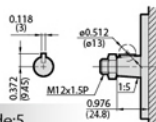
DRIVE SHAFTS

SUITABLE FOR

C E R FLANGE



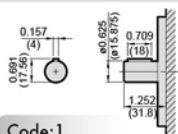
Code:4



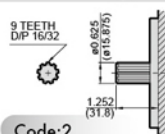
Code:5

DRIVE SHAFTS

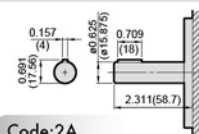
SUITABLE FOR **G** FLANGE



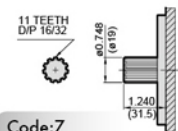
Code:1



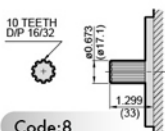
Code:2



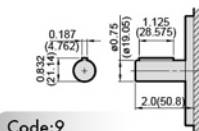
Code:2A



Code:7

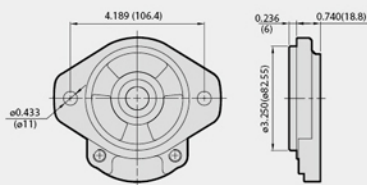


Code:8

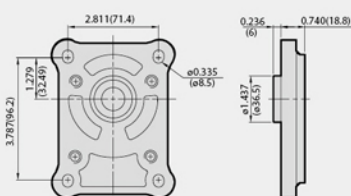


Code:9

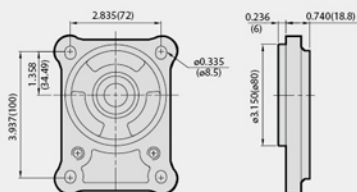
■ MOUNTING FLANGES



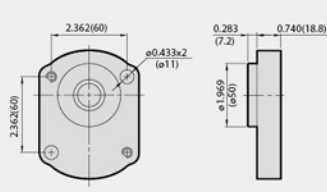
2G & 2D Series-Code:G
2M Series-Code:M



Code:C



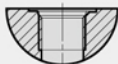
Code:E



Code:R

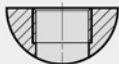
■ PORTS

UNF



Code	From "04" to "22"		From "24" to "33"	
	INLET	OUTLE	INLET	OUTLET
U	UNF# 12 1-1/16"-12	UNF# 10 7/8"-14	UNF# 16 1-5/16"-12	UNF# 12 1-1/16"-12

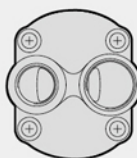
PT 、 NPT 、 BSPF



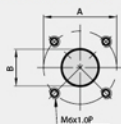
Code	From "04" to "22"		From "24" to "33"	
	INLET	OUTLE	INLET	OUTLET
P	PT 3/4"	PT 1/2"	PT 1"	PT 3/4"
N	NPT 3/4"	NPT 1/2"	NPT 1"	NPT 3/4"
B	BSPF 3/4"	BSPF 1/2"	BSPF 1"	BSPF 3/4"

REAR PORT

FOR "2G SERIES" ONLY

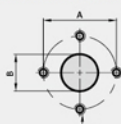


FLANGE (SQUARE)



Code	From "04" to "33"			
	INLET		OUTLET	
	A	B	A	B
F	ø1.575 (ø40)	ø0.787 (ø20)	ø1.380 (ø35)	ø0.591 (ø15)

FLANGE (DIAMOND)



Code	From "04" to "33"					
	INLET			OUTLET		
	A	B	C	A	B	C
E	ø1.575 (ø40)	ø0.748 (ø19)	M8 X 1.25P	ø1.181 (ø30)	ø0.512 (ø13)	M6 X 1.0P

Code	From "04" to "33"	
	INLET	OUTLET
Z	UNF# 16 1-5/16"-12	UNF# 12 1-1/16"-12
Y	PT 1"	PT 3/4"